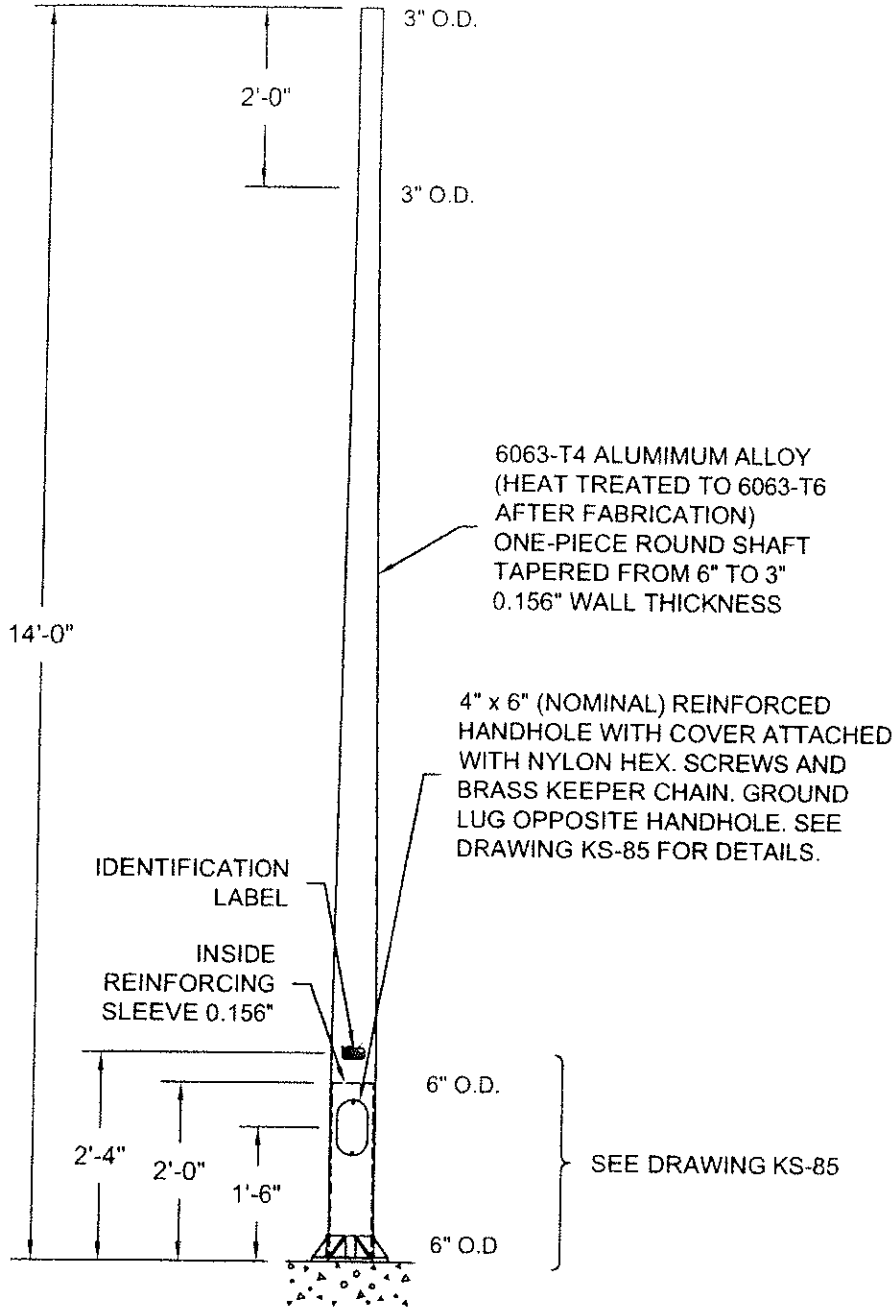


POLE SHALL NOT BE INSTALLED WITHOUT LUMINAIRE

UNITS SHALL BE MANUFACTURED IN ACCORDANCE WITH THE 2013 AASHTO STANDARD SPECIFICATIONS FOR STRUCTURAL SUPPORTS FOR HIGHWAY SIGNS, LUMINAIRES AND TRAFFIC SIGNALS.

MATERIAL FOR ANCHOR BOLTS: ASTM: F1554 GRADE 55 OR G40.21 GRADE 55W

HANDHOLE MUST BE SMOOTH AND FREE OF BURS



9 1/2" DIA. ANCHOR BOLT CIRCLE



BOLT CIRCLE FOUNDATION BY OTHERS

TYPE OP14

DO NOT SCALE



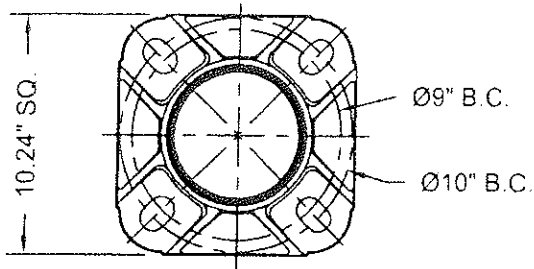
Structures Division, Valmont Industries, Inc.  
20805 Eaton Ave. Farmington,  
Minnesota 55024-0228  
Phone: (651) 463-8990 (800) 899-7577  
Fax: (651) 463-3349

TITLE: N ROUND TAPERED ALUMINUM LIGHT POLE		QTY:	
MODEL NO.: 83-14000BS0630/OP14		OWN BY: R.J.	
MATERIAL: ALUMINUM ALLOY		CHKD BY:	
FINISH: SATIN GROUND		APPR BY:	
PROJECT: CITY OF OVERLAND PARK, KS		DATE: 05-14-03	
SOLD TO:		DWG NO.: KS-70	
SHIP TO:		PAGE:	
P.O. NO.:		REV	
REP: POWER EQUIPMENT		DATE	
△	03-24-14	AASHTO 2013, 90mph	S.L.
△	03-05-10	AASHTO 1994	R.J.
△	04-17-08	J HOOK REMOVED	R.J.
REV	DATE	REVISION DESCRIPTION	BY

**\*\*CONFIDENTIAL\*\***

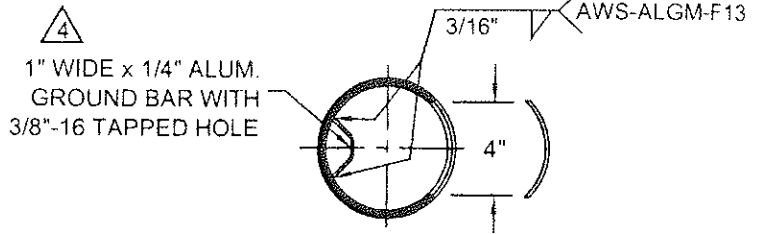
The information contained in this drawing is privileged and confidential, and may be protected from disclosure. Please be aware that any use or dissemination of this drawing may be subject to legal restriction or sanction.

1 / 25

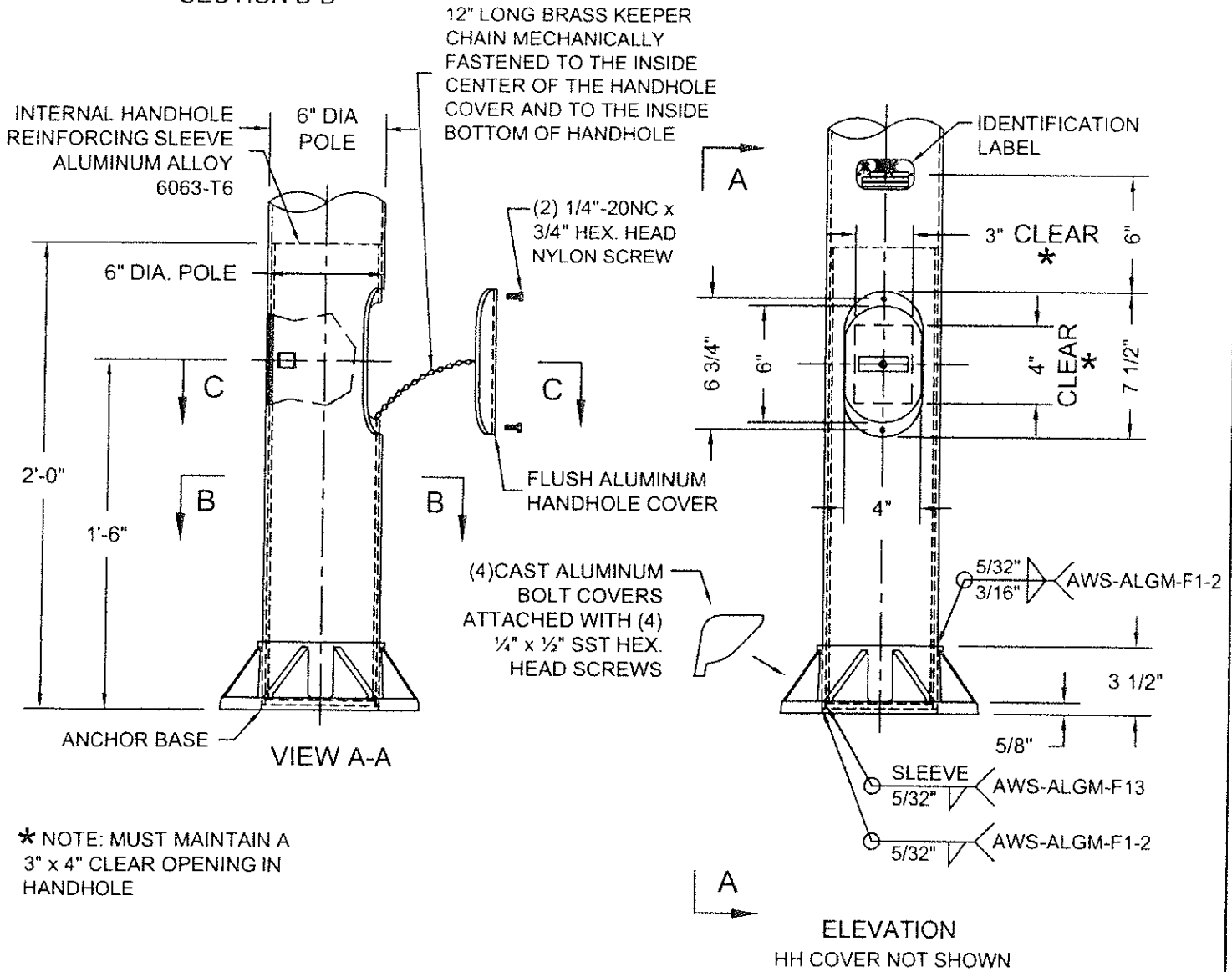


ANCHOR BASE 6"-1992  
356-T6 ALUMINUM ALLOY

SECTION B-B



SECTION C-C



\* NOTE: MUST MAINTAIN A  
3" x 4" CLEAR OPENING IN  
HANDHOLE

DO NOT SCALE



Structures Division, Valmont Industries, Inc.  
20805 Eaton Ave. Farmington,  
Minnesota 55024-0228  
Phone: (651) 463-8990 (800) 899-7577  
Fax: (651) 463-3349

TITLE: N 6" DIA. POLE BASE & 4" x 6" HANDHOLE		QTY:	
MODEL NO.:		DWN BY: R.J.	
MATERIAL: ALUMINUM ALLOY		CHK'D BY:	
FINISH: SATIN GROUND		APPR BY:	
PROJECT: CITY OF OVERLAND PARK, KS		DATE: 05-14-03	
SOLD TO:		DWG NO. KS-85	
SHIP TO:		PAGE:	
P.O. NO.:		REV	
REP: POWER EQUIPMENT		DATE	
3	03-28-14	REVISED V-GROUND SIZE	S.L.
3	11-25-08	ANCHOR BASE WELDING	R.J.
2	10-20-06	WELDING	R.J.
REV	DATE	REVISION DESCRIPTION	BY
			18 / 25

\*\*CONFIDENTIAL\*\*

The information contained in this drawing is privileged and confidential, and may be protected from disclosure. Please be aware that any use or dissemination of this drawing may be subject to legal restriction or sanction.