



Split Couplings

For Joining Split Conduit To Split Conduit

CRS's SPLIT COUPLINGS are specifically designed to connect CRS's Split Conduit. Use of SPLIT COUPLINGS makes laying lines quick and easy.

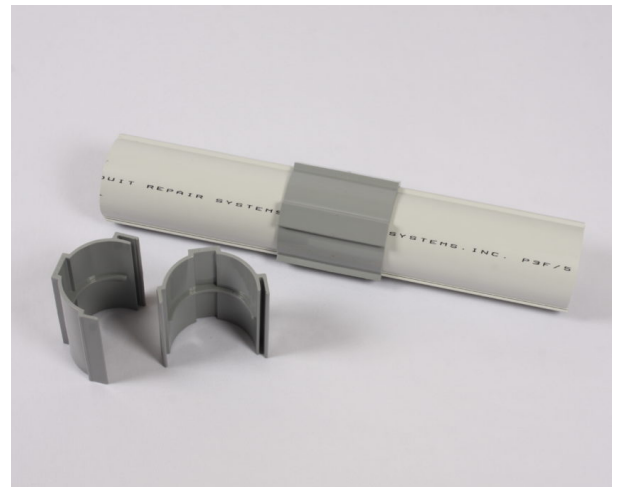
The SPLIT COUPLINGS are manufactured from a UL approved PVC plastic that is specifically formulated for power and communications.

In addition, the SPLIT COUPLINGS, along with CRS's Split Conduit, have superior strength and ultraviolet resistance.

CRS's SPLIT COUPLINGS are ETL listed* and meet the standards and specifications of UL 651.

The unique interlocking design gives the SPLIT COUPLINGS a tight seal with a smooth, clean finish on the insides of the pipe.

* The ETL listing does not apply to our Type C and 1 inch Sch. 40 products.



SCH 40 SPLIT COUPLINGS

| PART NUMBER | DESCRIPTION | WEIGHT | COUPLING LENGTH | MINIMUM ORDER |
|-------------|-------------------------|--------|-----------------|---------------|
| RC1F | 1" SPLIT SPLIT COUPLING | .2 lbs | 2.5 Inches | 6 |




1-800-670-1804

+1-435-673-1804

[Get a Quote](#)[Request Catalog](#)

| HOME | COMPANY | PRODUCT DEMO | FAQ | CONTACT |
|------|-------------------|--------------|-------------|---------|
| RC3F | 3" SPLIT COUPLING | .75 lbs | 4.5 inches | 6 |
| RC4F | 4" SPLIT COUPLING | 1.0 lbs | 4.75 Inches | 6 |
| RC5F | 5" SPLIT COUPLING | 1.5 lbs | 6.50 Inches | 6 |
| RC6F | 6" SPLIT COUPLING | 2.75 lbs | 7.25 Inches | 6 |

TYPE C SPLIT COUPLINGS

| PART NUMBER | DESCRIPTION | WEIGHT | COUPLING LENGTH | MINIMUM ORDER |
|-------------|--------------------------|---------|-----------------|---------------|
| RCD4F | 4" SPLIT C DUCT COUPLING | .85 lbs | 4.75 Inches | 6 |

About Us

Conduit Repair Systems, Inc. manufactures split conduit and other related split duct products for electrical, cable TV, and communications applications. Our company is headquartered in St. George, Utah, Located about 100 miles North East of Las Vegas, Nevada. We formally began business operations in 1995 and have steadily grown ever since.

NEWSLETTER

Fields marked with an * are required