

Catalog Number:

CP3B54C1ERAOSP1

EV240-400MP

120/240 VAC, 1-phase, 3-wire; 400 Amps Maximum, (see Main circuit breaker rating)

Rainproof - Type 3R, Aluminum Enclosure, unpainted

Enclosed Industrial Control - Suitable ONLY for Use as Service Equipment

The short circuit current rating is 10,000 RMS symmetrical amperes maximum at 240volts maximum, in accordance with the table below, but is limited to the lowest short circuit rating of any installed circuit breaker. Watthour meter is not included in the short circuit rating. Replacement circuit breakers must be of the same type and rating.

METERED CIRCUIT DIRECTORY (LUG-LUG)

No.	Amp.	Poles	Circuit Description
1	400	2	MAIN
2			
3			
4			
5			
6			

METERED CIRCUIT DIRECTORY (PANELBOARD)

No.	Amp.	Poles	Circuit Description	No.	Amp.	Poles	Circuit Description
1	60	2	EVSE	2	60	2	EVSE
3				4			
5	60	2	EVSE	6	60	2	EVSE
7				8			
9	60	2	FUTURE EVSE	10	60	2	FUTURE EVSE
11				12			
13	60	2	FUTURE EVSE	14	60	2	FUTURE EVSE
15				16			
17				18			
19				20			
21				22			
23				24			
25				26			
27				28			
29				30			

AIC RATING	MAIN	BRANCHES
10K	SIEMENS TYPE JXD2	SIEMENS TYPE BL

Circuit breaker handle trip position is between "ON" and "OFF". To reset breaker, move handle to the full "OFF" position, then to full "ON".

Note:
 BL 60A breaker lugs can accept the following wire sizes:
 Copper: sizes 8 to 4 AWG
 Aluminum: sizes 8 to 2 AWG

Terminal Information, Use AL/CU conductors

FIELD WIRED CONNECTORS				BUS CONNECTIONS				For Equipment Ground ONLY, multiple conductors in a single opening are permissible as indicated below			
Socket Size	Torque Lb.-In.	SLOTTED HEAD SCREWS		THREADFORMING SCREWS		SCREW	MAT'L	Torque, Lb.-In.	AWG Wire Size	Small Hole	Large Hole
		Small Hole	Large Hole	Small Hole	Large Hole						
5/16"	275	#14-10	20	35	10-24	AL	30	#14-10	1-2	1-2	
3/8"	375	#8	25	40	10-24	CU	50	#10	1	3	
1/2"	500	#6	35	45	1/4-20	AL	50	#8 - 6	1	1	
9/16"	600	#4	-	45	1/4-20	CU	72	#4 - 1/0	1	1	
		#3-1/0	-	50							

Shipping may loosen electrical connections. CHECK TIGHTNESS BEFORE ENERGIZING.

BONDED NEUTRAL – Remove neutral load conductors for test purposes only! FIELD INSTALLED conductors shall be 60°C, 75°C, or 90°C, sized to 60°C rating for 110 amps or less; and 75°C or 90°C for 125 amps and above.

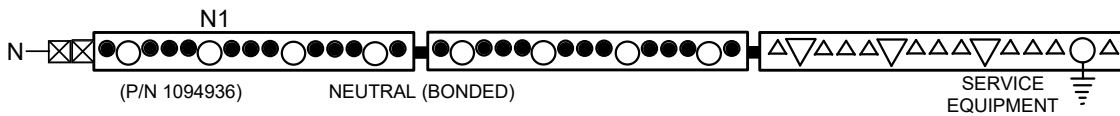
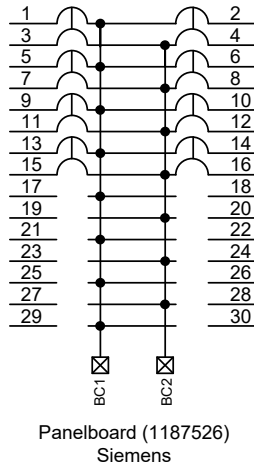
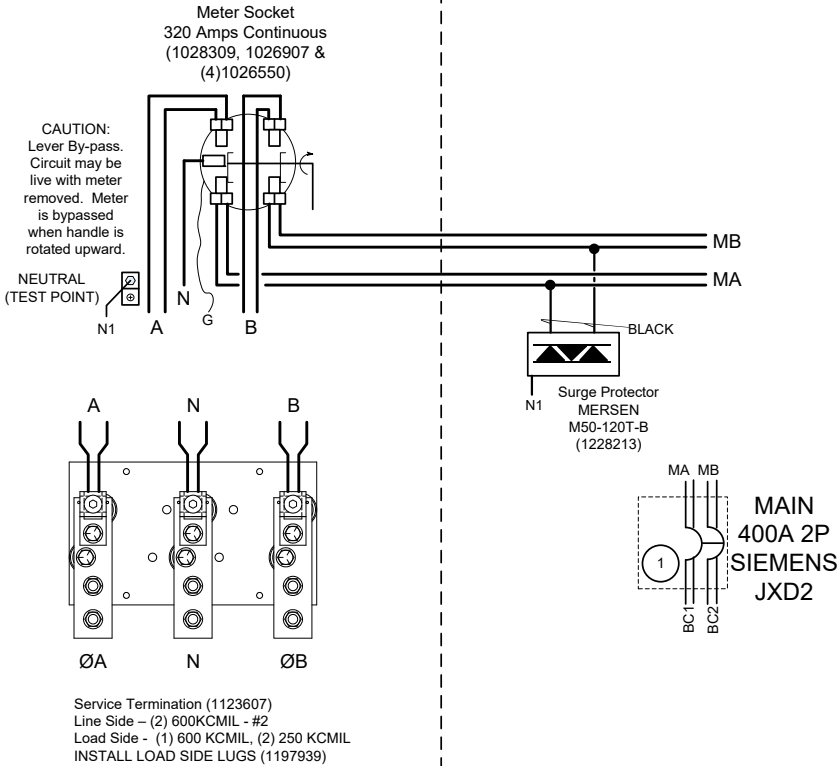
REV 2	09/15/22	051567	MPS
-------	----------	--------	-----



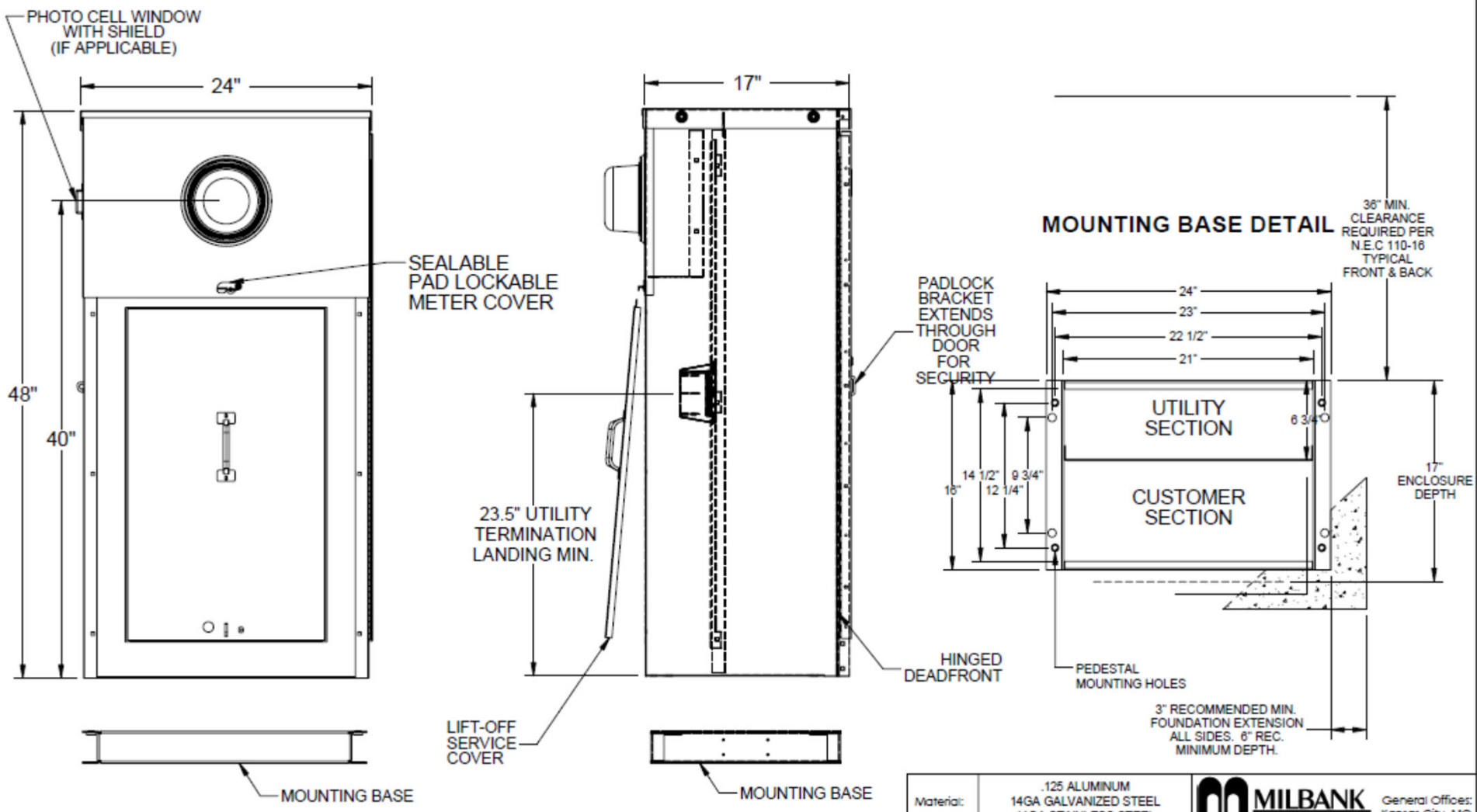
Catalog Number:
CP3B54C1ERAOSP1
 EV240-400MP

120/240 VAC, 1-phase, 3-wire; 400 Amps Maximum, (see Main circuit breaker rating)
 Rainproof - Type 3R, Aluminum Enclosure, unpainted
 Enclosed Industrial Control - Suitable ONLY for Use as Service Equipment

EXPOSED METER



24" COMMERCIAL PEDESTAL



Material:	.125 ALUMINUM 14GA GALVANIZED STEEL 14GA STAINLESS STEEL	<p>Third Angle Projection</p>	MILBANK MANUFACTURING CO.		General Offices: Kansas City, MO
Finish:			Title:	24" WIDE X 48" TALL R-Size NEMA 3R	
Tolerances: Unless Specified Otherwise X.X ±.1 X.XX ±.03 X.XXX ±.015 X' ±2"			Catalog No.:		
			Ref.:		
Scale: NTS			Drawing No.:	R-SIZE	
Drawn By:	Checked By:	Approved By:	Date:	5-3-07	sheet 1 of 2

**	02-19-09	PROTO TYPE	TB			
A	03-07-11	REMOVE ANCHOR BOLT WORDING ECR0001694	TB			

DRAWING APPROVAL REQUIRED

THE FOLLOWING DRAWING IS SUBMITTED FOR YOUR APPROVAL FOR INTERPRETIVE ACCURACY. BEFORE WE MAY PROCEED WITH MANUFACTURING THIS PRODUCT WE REQUEST THAT THE APPROPRIATE PERSONS REVIEW THIS DRAWING, SIGN & DATE THE DRAWING & RETURN THIS FORM AS APPROVAL OF THIS PRODUCT.

As of 9/15/22 the lead time for this unit is 9-11 weeks after receipt of this drawing with approval signature. Customer requested non-standard components can exceed 6 weeks.

Date 9/15/22
Agent MEGLIO & ASSOCIATES
Distributor MEGLIO & ASSOCIATES
Job OVERLAND PARK EV
PO#
Quote # SQ395059
Catalog # CP3B54C1ERAOSP1 (REV 2)

Comments: Approved with changes noted in this PDF as provided by Don Long.

Drawing is approved as is

Requires changes

Drawing not approved

Company Name City of Overland Park

Signature Brian Geiger Date 9/20/2022

PLEASE FAX OR EMAIL APPROVAL TO YOUR LOCAL MILBANK SALES REP.