

Catalog Number:
CP3B91115PAOOP4

120/240 VAC, 1-phase, 3-wire; 100 Amps Maximum, (see Main circuit breaker rating)
 Rainproof - Type 3R, Aluminum Enclosure, unpainted bare
 Enclosed Industrial Control - Suitable ONLY for Use as Service Equipment
 The short circuit current rating is 5,000 RMS symmetrical amperes maximum at 240volts maximum, in accordance with the table below, but is limited to the lowest short circuit rating of any installed circuit breaker. Watthour meter is not included in the short circuit rating. Replacement circuit breakers must be of the same type and rating.

METERED CIRCUIT DIRECTORY

No.	Amp.	Poles	Circuit Description	No.	Amp.	Poles	Circuit Description
1	100	2	MAIN	2	30	2	LIGHTING
3				4			
5	15	1		6			
7			CONTROL POWER	8	30	2	LIGHTING
9				10			
11				12			
13				14	30	2	LIGHTING
15				16			

NOTES:

- City of Overland Park
- 180 Degree Door
- Corbin Slam Latch #2 Lock on Customer Door (CCL SECURITY 15481RS)
- Tamper-proof screw on utility service entrance (wrench provided)
- No Shield on PE Window
- Tool Less Screws on meter cover
- 4-Sided Seal on Customer Door

AIC RATING	MAIN	BRANCHES
5	MILBANK TYPE MQP; SIEMENS TYPE QP; CUTLER HAMMER TYPE HQP, BR; GE TYPE THQL	MILBANK TYPE: MQP; SIEMENS TYPE: QP (1-POLE 70A MAX), QT, QPF; CUTLER-HAMMER TYPE: BR, QFCB, HQP, QPGF; GE TYPE TQL, THQL, THQL-GF

Circuit breaker handle trip position is between "ON" and "OFF". To reset breaker, move handle to the full "OFF" position, then to full "ON".

Terminal Information, Use AL/CU conductors

FIELD WIRED CONNECTORS				BUS CONNECTIONS				For Equipment Ground ONLY, multiple conductors in a single opening are permissible as indicated below		
Socket Size	Torque Lb.-In.	SLOTTED HEAD SCREWS		THREADFORMING SCREWS		Torque, Lb.-In.	AWG Wire Size	Small Hole	Large Hole	
		AWG Wire Size	Torque, Lb.-In.	SCREW	MAT'L					
5/16"	275	#14-10	20	35	10-24	AL	30			
3/8"	375	#8	25	40	10-24	CU	50			
1/2"	500	#6	35	45	1/4-20	AL	50			
9/16"	600	#4	-	45	1/4-20	CU	72			
		#3-1/0	-	50						
								#14-10	1-2	1-2
								#10	1	3
								#8 - 6	1	1
								#4 - 1/0		1

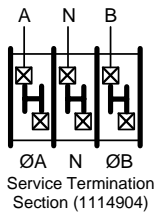
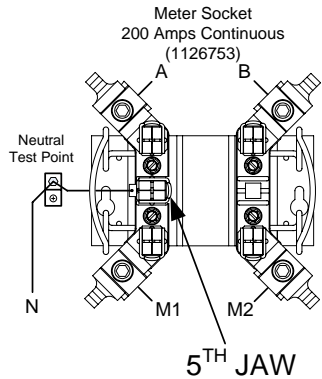
Shipping may loosen electrical connections. CHECK TIGHTNESS BEFORE ENERGIZING.

BONDED NEUTRAL – Remove neutral load conductors for test purposes only! FIELD INSTALLED conductors shall be 60°C, 75°C, or 90°C, sized to 60°C rating for 110 amps or less; and 75°C or 90°C for 125 amps and above.

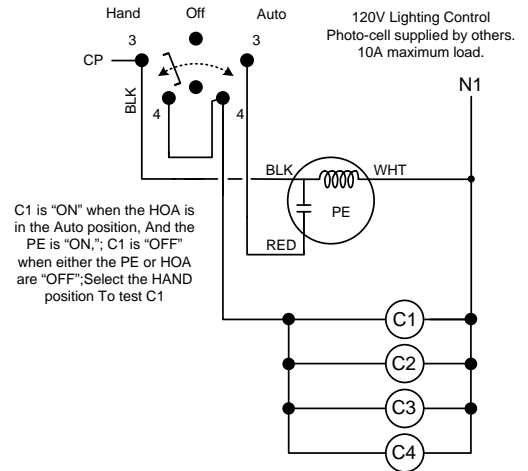


Catalog Number:
CP3B91115PAOOP4

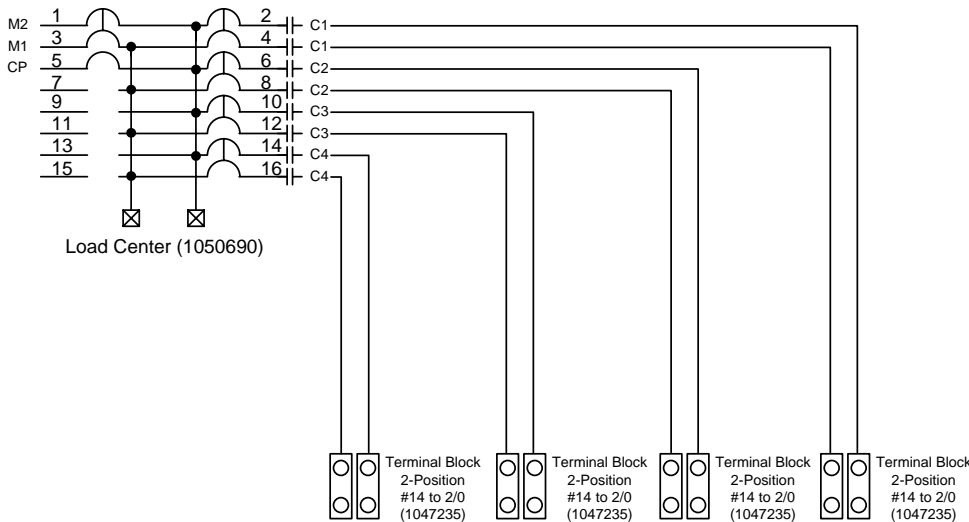
120/240 VAC, 1-phase, 3-wire; 100 Amps Maximum, (see Main circuit breaker rating)
Rainproof - Type 3R, Aluminum Enclosure, unpainted bare
Enclosed Industrial Control - Suitable ONLY for Use as Service Equipment



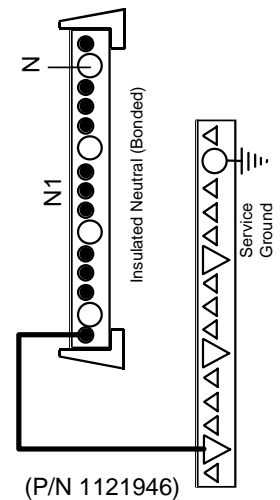
NO PE SHIELD



C1-C4: Contactors, 35-amp, 2-pole, Mercury (120V coil), Durakool 2035A120AC (1113661)



Insulated Bonded Neutral,
mounted on back barrier
above the contactors.



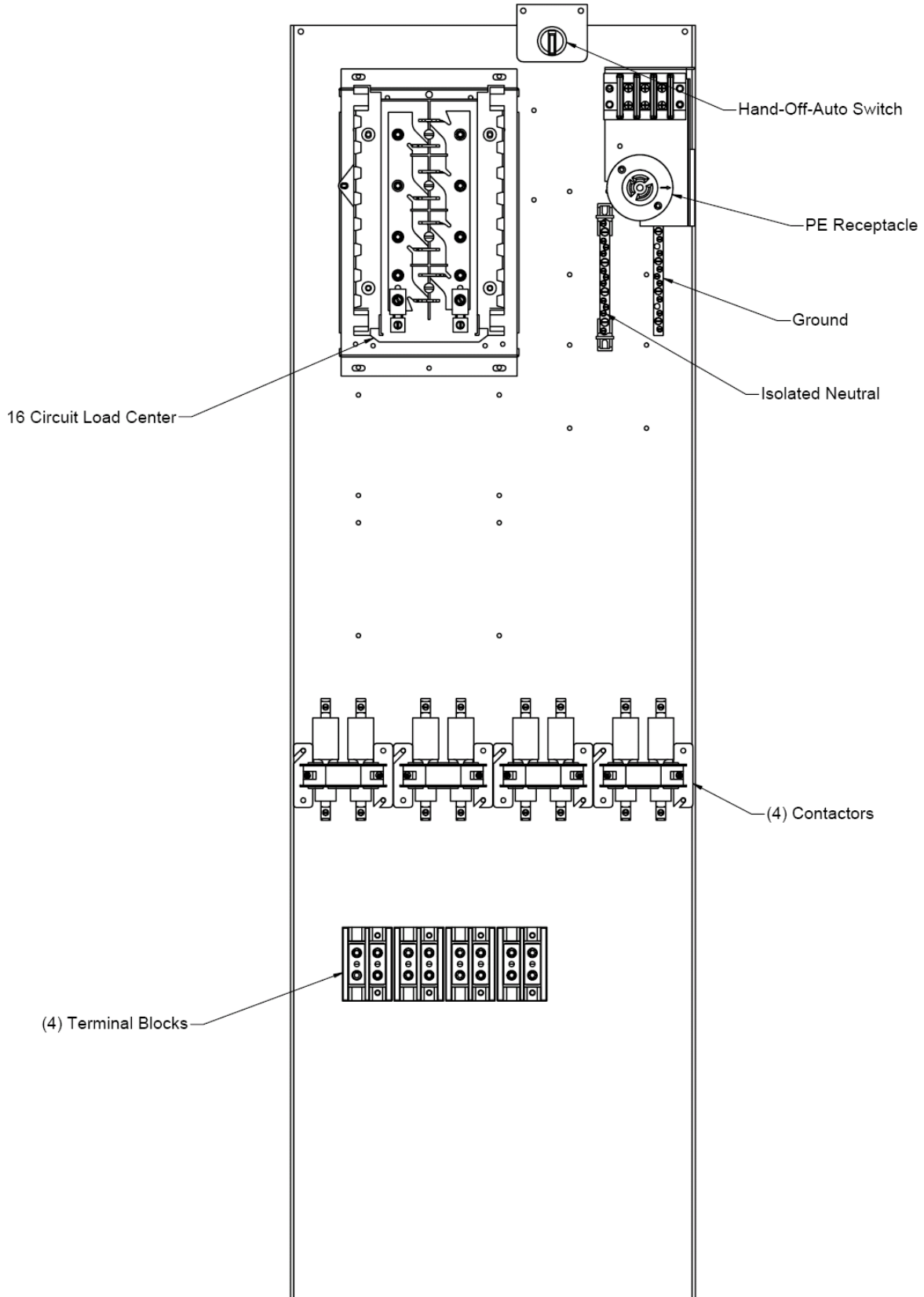
Neutral Bar and Ground Bar mounted vertically on side opposite front door hinge with screw heads facing out towards customer.

BONDED NEUTRAL, REMOVE NEUTRAL LOAD CONDUCTORS FOR TEST PURPOSES ONLY



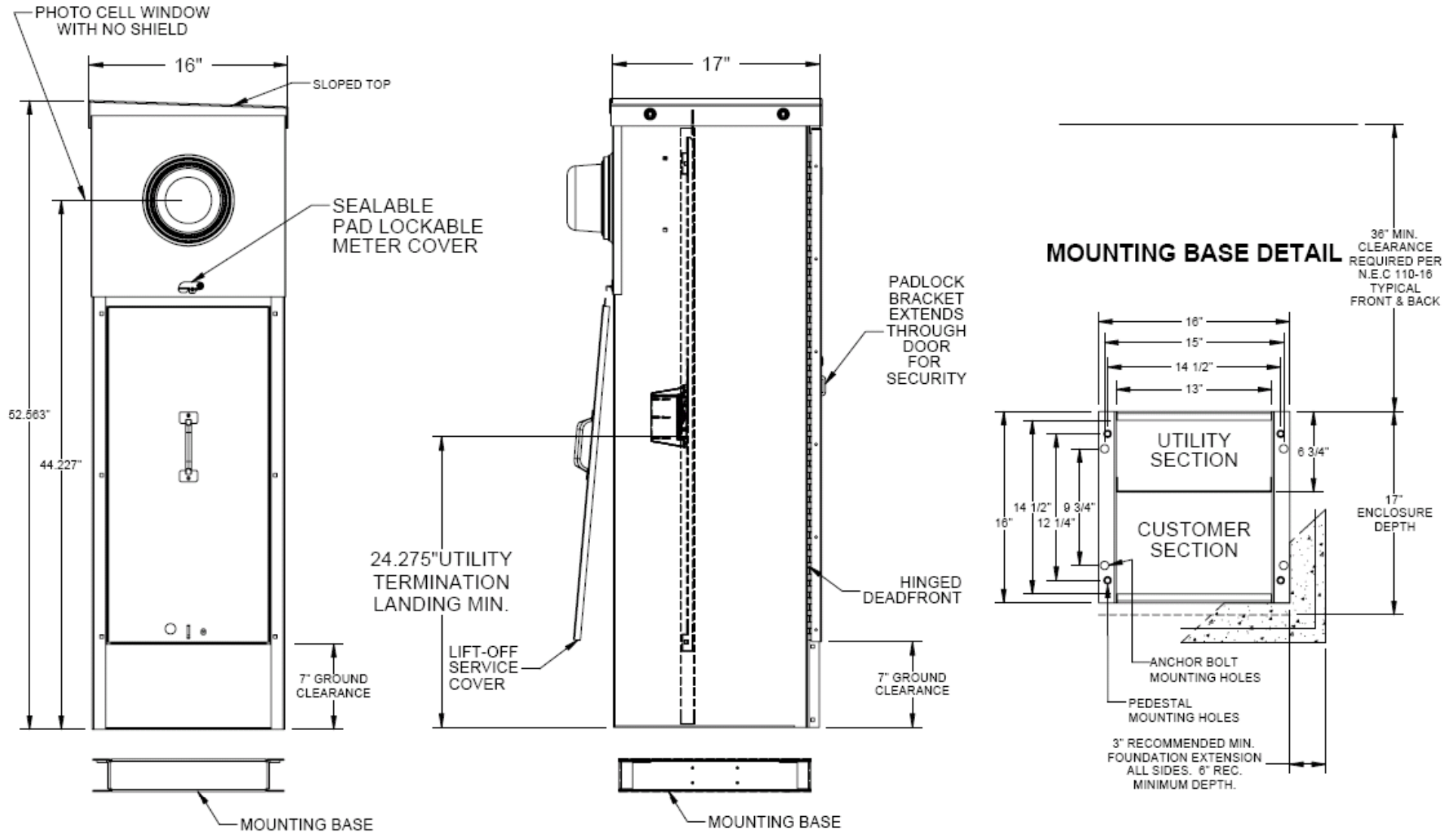
Catalog Number:

CP3B91115PAOOP4



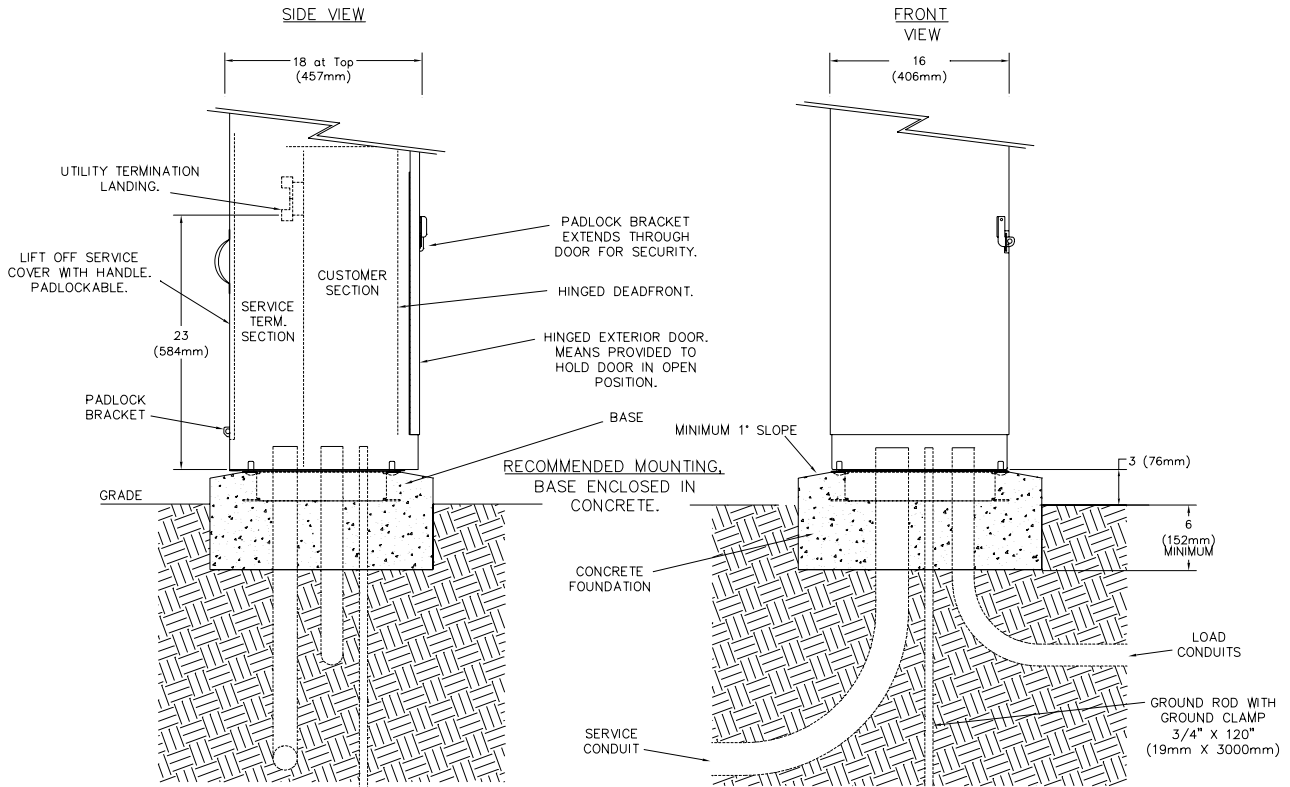
CP3B91115PAOOP4

16" COMMERCIAL PEDESTAL CITY OF OVERLAND PARK

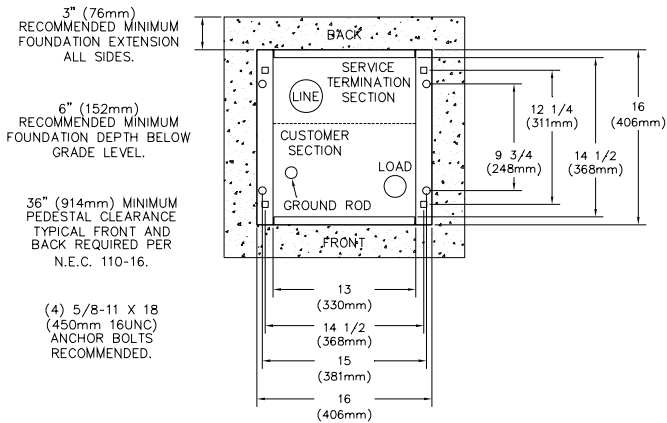


CP3B91115PA00P4

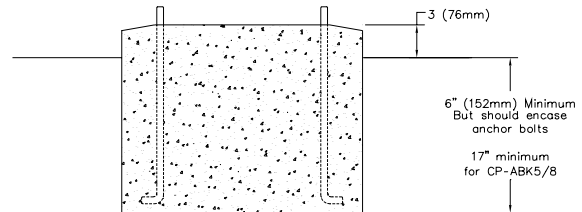
TYPICAL CONSTRUCTION & INSTALLATION DETAILS



MOUNTING BASE DETAIL (TOP VIEW)



OPTIONAL MOUNTING NO BASE, MOUNT DIRECTLY ON FOUNDATION.



○ PEDESTAL MOUNTING HOLES
 □ ANCHOR BOLT MOUNTING HOLES