

FRONT VIEW

FRONT VIEW
SHOWN LESS DOOR & COVERS

SIDE VIEW

SPECIFICATIONS

- * COMPLIES WITH EUSERC STANDARDS
- * NEMA 3R CONSTRUCTION
- * FABRICATED FROM CORROSION-RESISTANT .125 THK ALUMINUM
- * FACTOR V WIRING 800 VOLT RATED COPPER
- * ALL EXTERIOR HINGES CONTINUOUS PLANO TYPE
- * ALL COMPONENTS ARE U.L. LISTED.

PAGE 1 OF 2

THIS INFORMATION IS PROPERTY TO PACIFIC UTILITY PRODUCTS, INC. AND IS NOT DISCLOSED OUTSIDE OF PACIFIC UTILITY PRODUCTS, INC. WITHOUT A CONFIDENTIALITY AGREEMENT.

COMPONENT DIRECTORY

No.	CAT. NO.	DESCRIPTION
1	120/240 VAC 1 PH 3W 100 AMP	MTR SKT SJ 200A W/HORN BY-PASS
2	(1) LOAD CENTER 12-CKT 125A 1-PH	(1) C/B 30A 1P 10KAC 120/240VAC
3	(1) C/B 30A 1P 10KAC 120/240VAC	CORBIN/PEL CO LOCK TAPERED LATCH
4	INSULATED NEUTRAL	
5	GROUND	
6		

SERVICE PEDESTAL

S.O.	QTY.
18 JANUARY, 2012	
JOB NAME	
DISTRIBUTOR	POWER EQPT SALES

USP NON-RESIDENTIAL
SERVICE PEDESTAL
0 - 200 AMPERES
0 - 600 VOLTS

**PACIFIC
UTILITY
PRODUCTS**
2430 RAILROAD ST.
CORONA CALIFORNIA 92880

PACIFIC UTILITY PRODUCTS
2430 RAILROAD ST. CORONA, CA. 92880

FAL257001
S.O.

INDUSTRIAL CONTROL-
SUITABLE ONLY FOR USE AS SERVICE EQUIPMENT
BONDED NEUTRAL REMOVE BONDING MEANS FOR TEST PURPOSES ONLY

QTY. = 1

CAT. NO. USP2R-100-112C-OPK-TS 120/240VAC 1PH 60HZ 3W 100 AMPS

SHORT CIRCUIT RATING: 10,000 RMS SYMMETRICAL AMPS @ 240 VAC MAX. HOWEVER, THIS SHORT CIRCUIT RATING IS LIMITED TO THE LOWEST INTERRUPTING CAPACITY ON ANY DEVICE INSTALLED.

*CIRCUIT BREAKERS 100 AMPS OR LESS: CUTLER-HAMMER BR. BQ, GFCB. REPLACEMENT BREAKER(S) MUST BE SAME TYPE AND RATING.

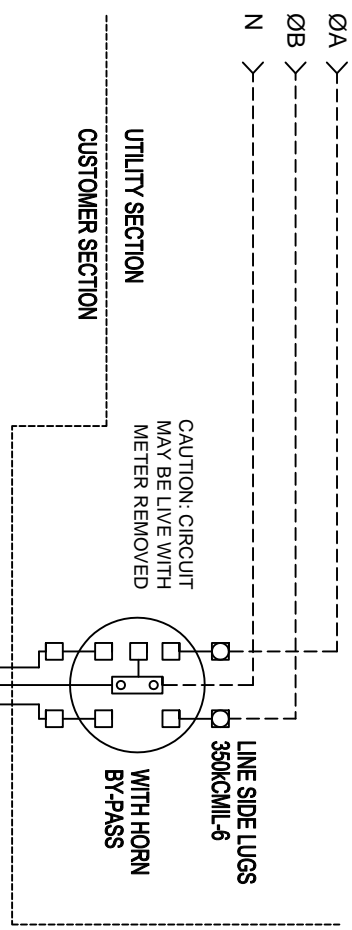
*AUTOMATIC TRIP IS INDICATED BY HANDLE POSITION MIDWAY BETWEEN (ON) AND (OFF). TO RESTORE POWER MOVE HANDLE TO (OFF), THEN (ON).

*METER SOCKET: DURHAM, 200 AMPS CONTINUOUS.

*LOAD CENTER IS SUITABLE FOR USE WITH 60/75 DEGREE C COPPER OR ALUMINUM WIRE.

*LOAD CENTER IS LIMITED TO A MAXIMUM OF 12 INSTALLED CIRCUITS THAT UTILIZE A NEUTRAL CONNECTION, EITHER SINGLE POLE, MULTIPLE-POLE, OR A COMBINATION OF EACH.

*SHIPPING TENDS TO LOOSEN ELECTRICAL CONNECTIONS - TIGHTEN ALL CONNECTIONS BEFORE ENERGIZING UNIT.



PAGE 2 OF 2

WIRING DIAGRAM

NO.	AMP.	POLE	DESCRIPTION
1	30	1	SIGNAL

- *** TORQUE INFORMATION
- 350MCM - 6 CU/AL 325 IN.LB.
 - ▲ #14-1/0 CU/AL 50 IN.LB.
- *** NEUTRAL & EQUIPMENT GROUND-SINGLE CONDUCTOR
- #14-1/0 CU/AL #3-1/0 50 IN.LB.
 - #14-1/0 CU/AL #6-4 45 IN.LB.
 - #14-6 CU/AL #8 40 IN.LB.
 - #14-10 CU/AL #8 25 IN.LB.
 - #14-10 CU/AL #6 35 IN.LB.
 - #14-10 CU/AL #8 25 IN.LB.
- *** EQUIPMENT GROUND-MULTIPLE CONDUCTOR
- (2 OR 3) #10,12,14 CU/AL 45 IN.LB.
 - (2) #12,14 CU/AL 20 IN.LB.
- *** FIELD INSTALLED DEVICES--TORQUE TO VALUES INDICATED ON OR WITH DEVICE