

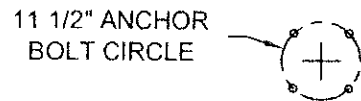
POLE SHALL NOT BE INSTALLED WITHOUT LUMINAIRE

UNITS SHALL BE MANUFACTURED IN ACCORDANCE WITH THE 2013 AASHTO STANDARD SPECIFICATIONS FOR STRUCTURAL SUPPORTS FOR HIGHWAY SIGNS, LUMINAIRES AND TRAFFIC SIGNALS.

WIND SPEED: 90 mph
 GUST: 117 mph
 EPA (LUMINAIRE): 1.3 sq.ft
 WEIGHT (LUMINAIRE): 55 lbs

HANDHOLE MUST BE SMOOTH AND FREE OF BURS

MATERIAL FOR ANCHOR BOLTS:
 ASTM: F1554 GRADE 55 OR G40.21 GRADE 55W



BOLT CIRCLE FOUNDATION BY OTHERS

TYPE OP303-8-8

DO NOT SCALE



Structures Division, Valmont Industries, Inc.
 20805 Eaton Ave Farmington,
 Minnesota 55024-0228
 Phone: (651) 463-8990 (800) 899-7577
 Fax: (651) 463-3349

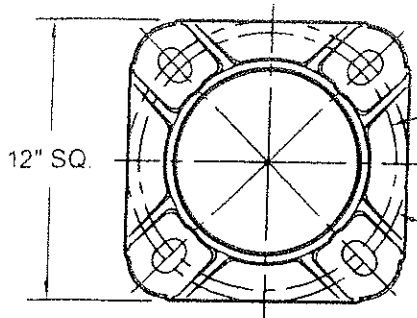
TITLE:	N ALUM. POLE FOR TWIN 8' SINGLE MEMBER ARM	QTY:	
MODEL NO.:	22-30308CT0845/OP303	DWN BY:	R.J.
MATERIAL:	ALUMINUM ALLOY	CHK'D BY:	
FINISH:	SATIN GROUND	APPR BY:	
PROJECT:	CITY OF OVERLAND PARK, KS	DATE:	05-14-03
SOLD TO:		DWG NO.:	KS-73
SHIP TO:		PAGE:	
P.O. NO.:		REV	
REP:	POWER EQUIPMENT	DATE	

Δ	03-28-14	AASHTO 2013, 90mph	S.L.
Δ	03-05-10	AASHTO 1994	R.J.
Δ	08-22-05	VIBRATION DAMPER WELDING	R.J.
REV	DATE	REVISION DESCRIPTION	BY

DWG NO.:	KS-73
PAGE:	
BY	4 / 25

CONFIDENTIAL

The information contained in this drawing is privileged and confidential, and may be protected from disclosure. Please be aware that any use or dissemination of this drawing may be subject to legal restriction or sanction.

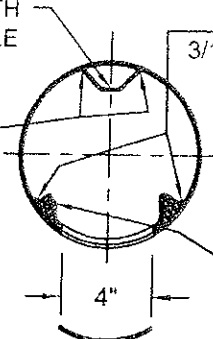


ANCHOR BASE 8"-1992-T
356-T6 ALUMINUM ALLOY

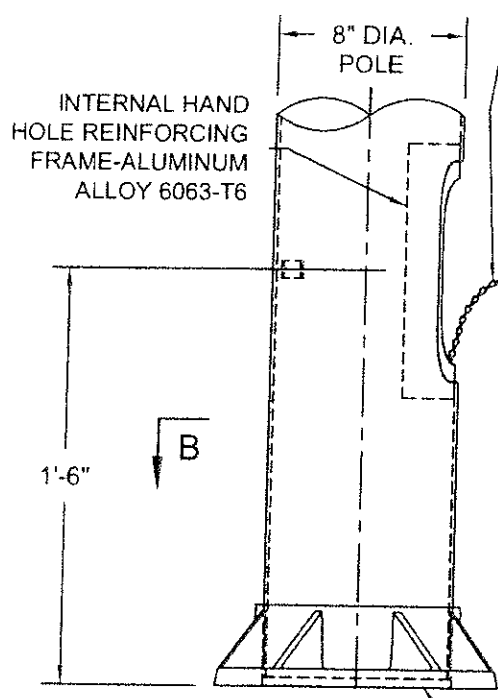
SECTION B-B

△ 4

1" WIDE x 1/4" ALUM.
GROUND BAR WITH
3/8"-16 TAPPED HOLE



SECTION C-C



VIEW A-A

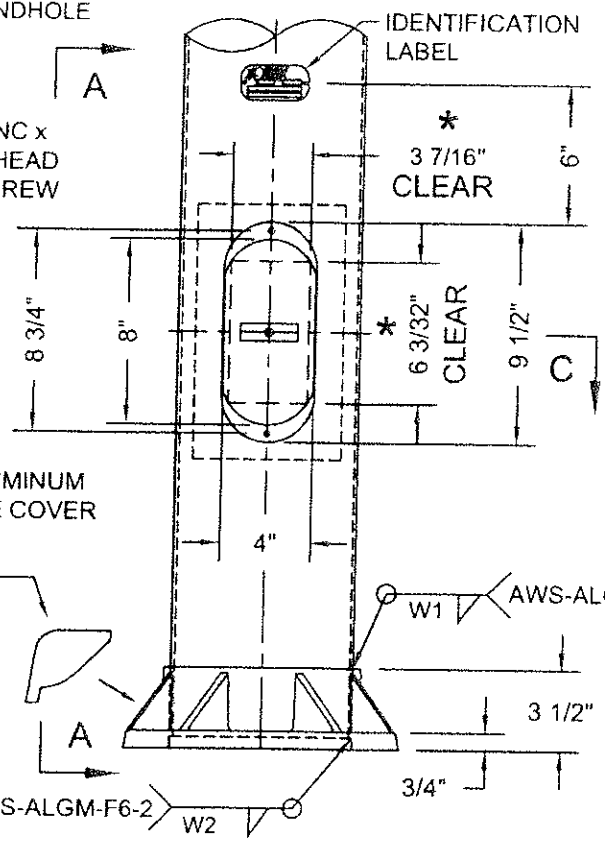
12" LONG BRASS KEEPER
CHAIN MECHANICALLY
FASTENED TO THE INSIDE
CENTER OF THE HANDHOLE
COVER AND TO THE INSIDE
BOTTOM OF HANDHOLE

(2) 1/4"-20NC x
3/4" HEX. HEAD
NYLON SCREW

FLUSH ALUMINUM
HANDHOLE COVER

(4) CAST ALUMINUM
BOLT COVERS
ATTACHED WITH (4)
1/4" x 1/2" SST HEX.
HEAD SCREWS

ANCHOR BASE



ELEVATION
HH COVER OMITTED

WELDING TABLE		
POLE WALL THICKNESS	W1	W2
0.188"	3/16 [△]	3/16"
0.219"	1/4"	7/32"

* NOTE: MUST MAINTAIN A
3 7/16" x 6 3/32" CLEAR
OPENING IN HANDHOLE

DO NOT SCALE



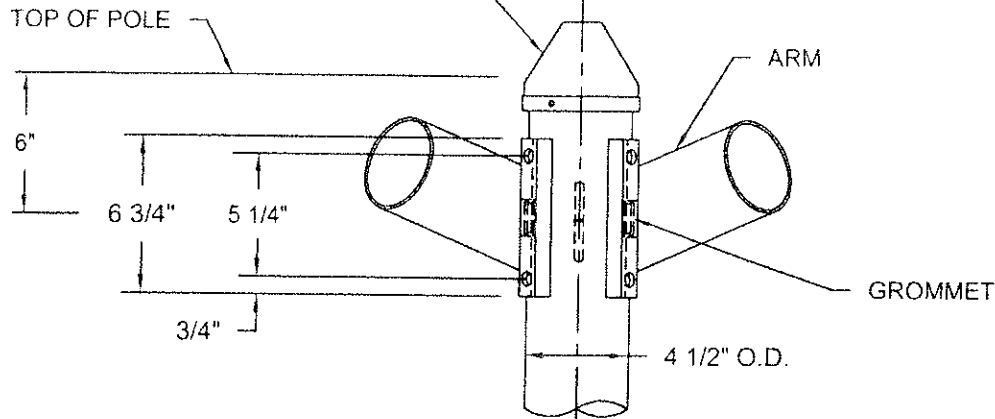
Structures Division, Valmont Industries, Inc.
20805 Eaton Ave Farmington,
Minnesota 55024-0228
Phone: (651) 463-8990 (800) 899-7577
Fax: (651) 463-3349

TITLE: N 8" DIA. POLE BASE & 4" x 8" HANDHOLE		QTY:	
MODEL NO.:		DWN BY: R.J.	
MATERIAL: ALUMINUM ALLOY		CHK'D BY:	
FINISH: SATIN GROUND		APPR BY:	
PROJECT: CITY OF OVERLAND PARK, KS		DATE: 05-14-03	
SOLD TO:		DWG NO. KS-87	
SHIP TO:		PAGE:	
P.O. NO.:		BY: 20 / 25	
REP: POWER EQUIPMENT			
△ 4	03-26-14	REV'D V-GROUND, WELD SIZE AND PROCEDURE	S.L.
△ 3	10-20-06	WELDING	R.J.
△ 2	06-22-05	GENERAL	R.J.
REV	DATE	REVISION DESCRIPTION	BY

****CONFIDENTIAL****

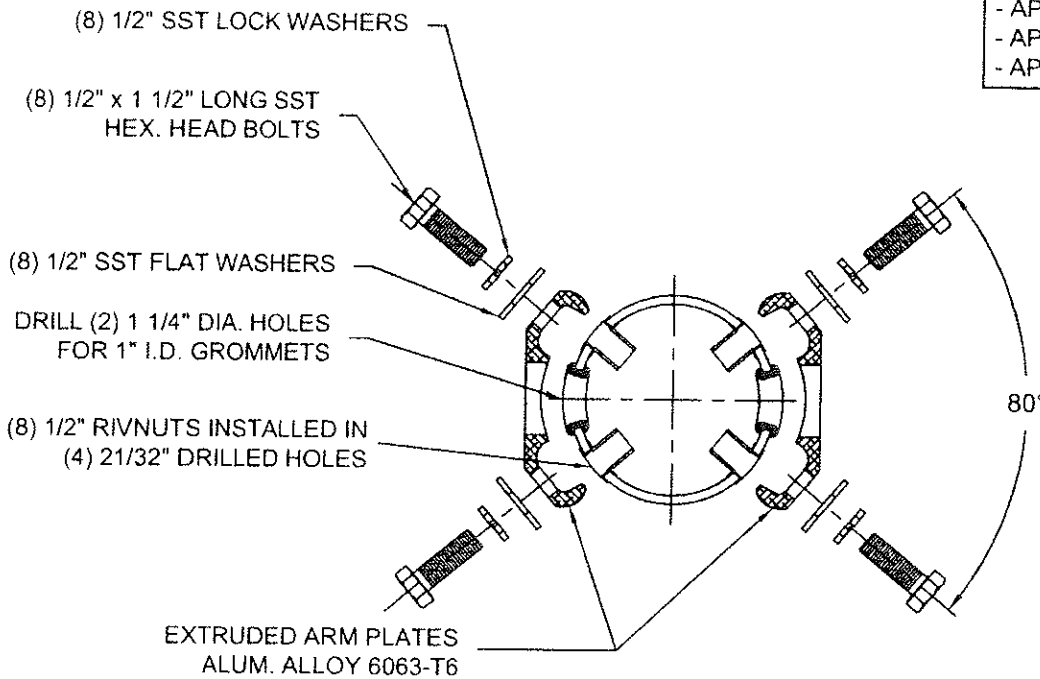
The information contained in this drawing is privileged and confidential, and may be protected from disclosure. Please be aware that any use or dissemination of this drawing may be subject to legal restriction or sanction.

SPUN ALUMINUM POLE CAP WITH
(3) 1/4"-20NC x 1/2" SST HEX.
SOCKET HEADLESS SET SCREWS



ARM MOUNTING

TIGHTENING SEQUENCE
FOR Ø1/2" STAINLESS
STEEL BOLTS.
- TIGHTEN WITH HAND.
- APPLY 37.50 ft.lbs
- APPLY 47.50 ft.lbs
- APPLY 50.00 ft.lbs



TYPICAL SECTION

DO NOT SCALE



Structures Division, Valmont Industries, Inc.
20805 Eaton Ave Farmington,
Minnesota 55024-0228
Phone: (651) 463-8990 (800) 899-7577
Fax: (651) 463-3349

TITLE: N TYPE A - SINGLE MEMBER ARM ATTACHMENT - TWIN		QTY:	
MODEL NO.:		DWN BY: R.J.	
MATERIAL: ALUMINUM ALLOY		CHK'D BY:	
FINISH: SATIN GROUND		APPR BY:	
PROJECT: CITY OF OVERLAND PARK, KS		DATE: 05-14-03	
SOLD TO:		DWG NO.:	
SHIP TO:		KS-83-T	
P.O. NO.:		PAGE:	
REP: POWER EQUIPMENT		BY	
1	07-13-10	SINGLE & TWIN SEPARATED	R.J.
2	10-20-06	J HOOK WELDING	R.J.
3	10-15-04	J HOOK ADDED	R.J.
REV	DATE	REVISION DESCRIPTION	BY
			15 25

****CONFIDENTIAL****

The information contained in this drawing is privileged and confidential, and may be protected from disclosure. Please be aware that any use or dissemination of this drawing may be subject to legal restriction or sanction.