

TYPE B TRUSS ARM 12'-0"
PER DRAWING KS-81

LUMINAIRE BY OTHERS

REMOVABLE ALUMINUM
POLE CAP WITH SST
SET SCREWS

30'-0" NOMINAL
MOUNTING
HEIGHT

3/16" AWS-ALGM-G12
3/16"

6" O.D.

3'-3" RISE

TOP
OF
POLE

3'-0"

6" O.D.

J HOOK
3/8" DIA.

J HOOK ASSY

POLE SHALL NOT BE INSTALLED
WITHOUT LUMINAIRE

6063-T4 ALUMINUM ALLOY
(HEAT TREATED TO 6063-T6
AFTER FABRICATION)
ONE-PIECE ROUND SHAFT
TAPERED FROM 8" TO 6"
0.188" WALL THICKNESS

UNITS SHALL BE MANUFACTURED IN
ACCORDANCE WITH THE 2013 Δ
AASHTO STANDARD SPECIFICATIONS
FOR STRUCTURAL SUPPORTS FOR
HIGHWAY SIGNS, LUMINAIRES AND
TRAFFIC SIGNALS.

WIND SPEED: 90 mph Δ
GUST: 117 mph Δ
EPA (LUMINAIRE): 1.3 sq.ft
WEIGHT (LUMINAIRE): 55 lbs

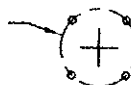
HANDHOLE MUST BE SMOOTH AND
FREE OF BURS

MATERIAL FOR ANCHOR BOLTS:
ASTM: F1554 GRADE 55 OR G40.21
GRADE 55W

1" AWS-ALGM-G3

INTERNAL
VIBRATION
DAMPER

11 1/2" ANCHOR
BOLT CIRCLE



BOLT CIRCLE
FOUNDATION BY OTHERS

4" x 8" (NOMINAL) REINFORCED
HANDHOLE WITH COVER ATTACHED
WITH NYLON HEX. SCREWS AND
BRASS KEEPER CHAIN. GROUND
LUG OPPOSITE HANDHOLE. SEE
DRAWING KS-87 FOR DETAILS.

SHAFT LENGTH 26'-8"

10'-8"

IDENTIFICATION
LABEL

SEE DRAWING KS-87

2'-6"

2'-5"

1'-6"

8" O.D.

8" O.D.

TYPE OP302-12

CS-300 BREAKAWAY BASE
SEE DRAWING KS-90

DO NOT SCALE



Structures Division, Valmont Industries, Inc.
20805 Eaton Ave Farmington,
Minnesota 55024-0228
Phone: (651) 463-8990 (800) 899-7577
Fax: (651) 463-3349

TITLE:
N ALUM. LIGHT POLE FOR 12'-0" TRUSS ARM
MODEL NO.: 31-30312CT0860/OP302
MATERIAL: ALUMINUM ALLOY
FINISH: SATIN GROUND
PROJECT: CITY OF OVERLAND PARK, KS
SOLD TO:
SHIP TO:
P.O. NO:
REP: POWER EQUIPMENT

QTY:

OWN BY:

R.J.

CHK'D BY:

APPR BY:

DATE:

05-14-03

CONFIDENTIAL

The information contained in this drawing is privileged and confidential,
and may be protected from disclosure. Please be aware that any use or
dissemination of this drawing may be subject to legal restriction or sanction.

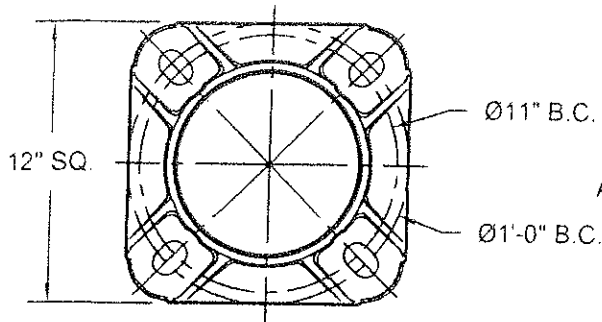
Δ	03-28-14	AASHTO 2013, 90mph	S.L.
Δ	03-05-10	AASHTO 1994	R.J.
Δ	10-20-06	VIBRATION DAMPER WELDING	R.J.
REV	DATE	REVISION DESCRIPTION	BY

DWG NO:

KS-72

PAGE:

3/25

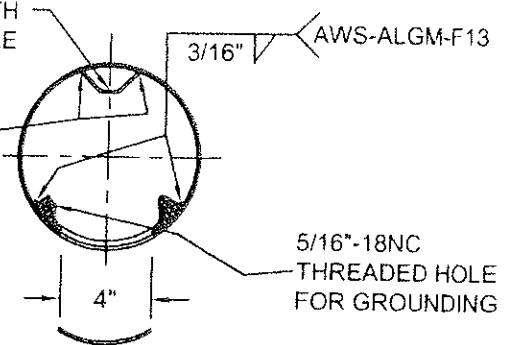


ANCHOR BASE 8"-1992-T
356-T6 ALUMINUM ALLOY

SECTION B-B

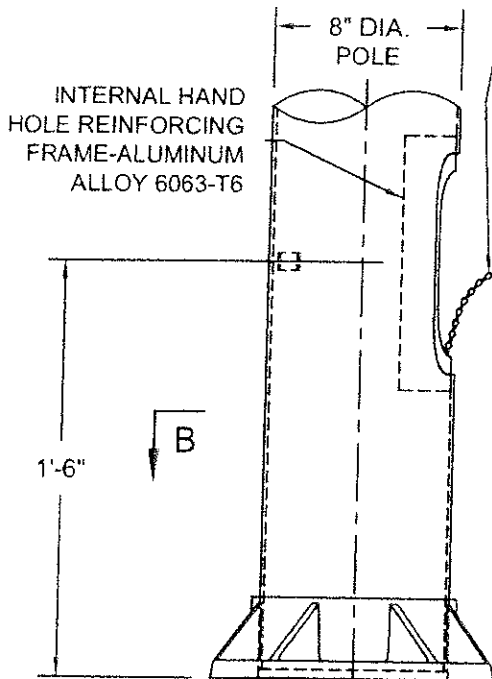


1" WIDE x 1/4" ALUM.
GROUND BAR WITH
3/8"-16 TAPPED HOLE



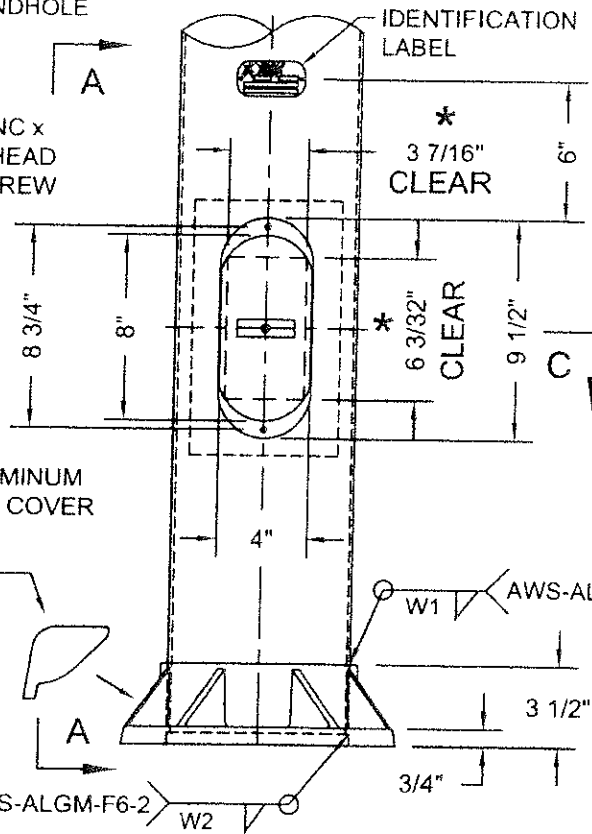
SECTION C-C

12" LONG BRASS KEEPER
CHAIN MECHANICALLY
FASTENED TO THE INSIDE
CENTER OF THE HANDHOLE
COVER AND TO THE INSIDE
BOTTOM OF HANDHOLE



VIEW A-A

(2) 1/4"-20NC x
3/4" HEX. HEAD
NYLON SCREW



ELEVATION
HH COVER OMITTED

FLUSH ALUMINUM
HANDHOLE COVER

(4) CAST ALUMINUM
BOLT COVERS
ATTACHED WITH (4)
1/4" x 1/2" SST HEX.
HEAD SCREWS

ANCHOR BASE

WELDING TABLE

POLE WALL THICKNESS	W1	W2
0.188"	3/16"	3/16"
0.219"	1/4"	7/32"

* NOTE: MUST MAINTAIN A
3 7/16" x 6 3/32" CLEAR
OPENING IN HANDHOLE

DO NOT SCALE



Structures Division, Valmont Industries, Inc.
20805 Eaton Ave Farmington,
Minnesota 55024-0228
Phone: (651) 463-8990 (800) 899-7577
Fax: (651) 463-3349

TITLE: 8" DIA. POLE BASE & 4" x 8" HANDHOLE
MODEL NO.:
MATERIAL: ALUMINUM ALLOY
FINISH: SATIN GROUND
PROJECT: CITY OF OVERLAND PARK, KS
SOLD TO:
SHIP TO:
P.O. NO.:
REP: POWER EQUIPMENT

QTY:
DWN BY: R.J.
CHK'D BY:
APPR BY:
DATE: 05-14-03

CONFIDENTIAL

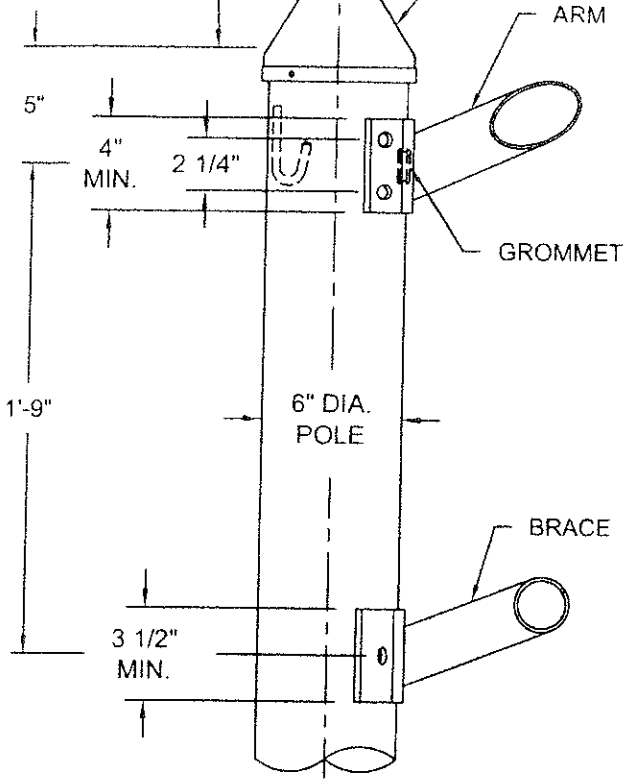
The information contained in this drawing is privileged and confidential, and may be protected from disclosure. Please be aware that any use or dissemination of this drawing may be subject to legal restriction or sanction.

REV	DATE	REVISION DESCRIPTION	BY	DATE
1	03-26-14	REV'D V-GROUND, WELD SIZE AND PROCEDURE	S.L.	
2	10-20-06	WELDING	R.J.	KS-87
3	08-22-05	GENERAL	R.J.	

DWG NO: KS-87
PAGE: 20 / 25

SPUN ALUMINUM POLE CAP WITH
(3) 1/4"-20NC x 1/2" SST HEX.
SOCKET HEADLESS SET SCREWS

TOP OF POLE



TRUSS ARM MOUNTING

TIGHTENING SEQUENCE FOR Ø1/2" STAINLESS STEEL BOLTS.
 - TIGHTEN WITH HAND.
 - APPLY 37.50 ft.lbs
 - APPLY 47.50 ft.lbs
 - APPLY 50.00 ft.lbs

TIGHTENING SEQUENCE FOR Ø3/8" STAINLESS STEEL BOLTS.
 - TIGHTEN WITH HAND.
 - APPLY 17.00 ft.lbs
 - APPLY 21.50 ft.lbs
 - APPLY 22.50 ft.lbs

(4) 1/2" x 2" LONG SST HEX. HEAD BOLTS

(4) 1/2" SST LOCK WASHERS

(4) 1/2" SST FLAT WASHERS

(4) 1/2" RIVNUTS
INSTALLED IN (4) 21/32"
DRILLED HOLES

(4) 1/2" SST FLAT
WASHERS
15'-0" ARM ONLY

(4) 1/2" SST
HEX.NUTS
15'-0" ARM ONLY

DRILL 1 1/4"
DIA. HOLE FOR
1" I.D. GROMMET

EXTRUDED ARM PLATES
ALUM. ALLOY 6063-T6

SECTION AT ARM ATTACHMENT

(2) 3/8" x 1 3/4" LONG
SST HEX. HEAD BOLTS

(2) 3/8" SST LOCK WASHERS

(2) 3/8" SST FLAT WASHERS

(2) 3/8" RIVNUTS
INSTALLED IN (2)
1/2" DRILLED
HOLES

EXTRUDED ARM PLATES
ALUM. ALLOY 6063-T6

SECTION AT BRACE ATTACHMENT

DO NOT SCALE



Structures Division, Valmont Industries, Inc.
20805 Eaton Ave Farmington,
Minnesota 55024-0228
Phone: (651) 463-8990 (800) 899-7577
Fax: (651) 463-3349

TITLE:
N TYPE B - TRUSS ARM ATTACHMENT - SINGLE

MODEL NO.:
MATERIAL: ALUMINUM ALLOY
FINISH: SATIN GROUND
PROJECT: CITY OF OVERLAND PARK, KS
SOLD TO:
SHIP TO:
P.O. NO.:
REP: POWER EQUIPMENT

QTY:
DWN BY:
R.J.
CHK'D BY:
APPR BY:
DATE:
05-14-03

08-16-10 SINGLE & TWIN SEPARATED R.J.

11-25-08 LENGTH OF ATTACHMENT PLATES R.J.

10-20-06 J HOOK WELDING R.J.

REV DATE REVISION DESCRIPTION BY

DWG NO.:
KS-84-S
PAGE:
16 / 25

****CONFIDENTIAL****

The information contained in this drawing is privileged and confidential, and may be protected from disclosure. Please be aware that any use or dissemination of this drawing may be subject to legal restriction or sanction.