

valmont

Structures Division, Valmont Industries, Inc.
20805 Eaton Ave. Farmington,
Minnesota 55024-0228
Phone: (651) 463-8990 (800) 899-7577
Fax: (651) 463-3349

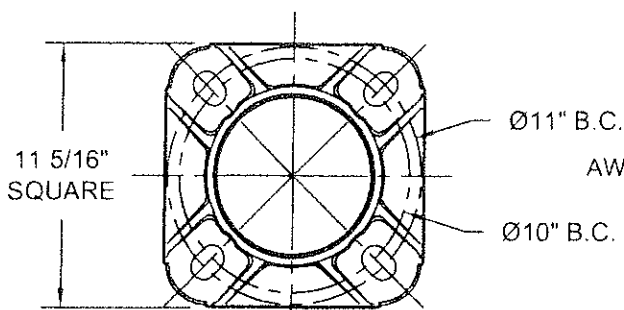
****CONFIDENTIAL****

The information contained in this drawing is privileged and confidential, and may be protected from disclosure. Please be aware that any use or dissemination of this drawing may be subject to legal restriction or sanction.

REV	DATE	REVISION DESCRIPTION	BY
1	03-28-14	AASHTO 2013, 90mph	S.L.
2	03-05-10	AASHTO 1994	R.J.
3	10-20-06	VIBRATION DAMPER WELDING	R.J.
4			

TITLE:	N ALUM. LIGHT POLE FOR SINGLE MEMBER ARM	QTY:	
MODEL NO.:	21-3030XCT0745/OP301	OWN BY:	R.J.
MATERIAL:	ALUMINUM ALLOY	CHK'D BY:	
FINISH:	SATIN GROUND	APPR BY:	
PROJECT:	CITY OF OVERLAND PARK, KS	DATE:	05-14-03
SOLD TO:		DWG NO.:	KS-71
SHIP TO:		PAGE:	2/25
P.O. NO.:			
REP:	POWER EQUIPMENT		

5

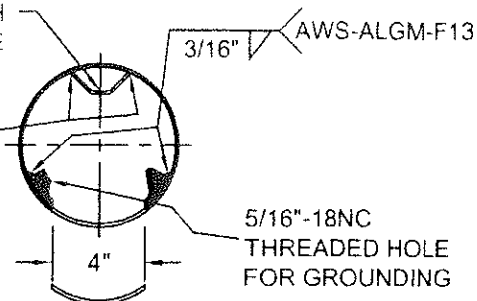


ANCHOR BASE 7"-1992
356-T6 ALUMINUM ALLOY

SECTION B-B

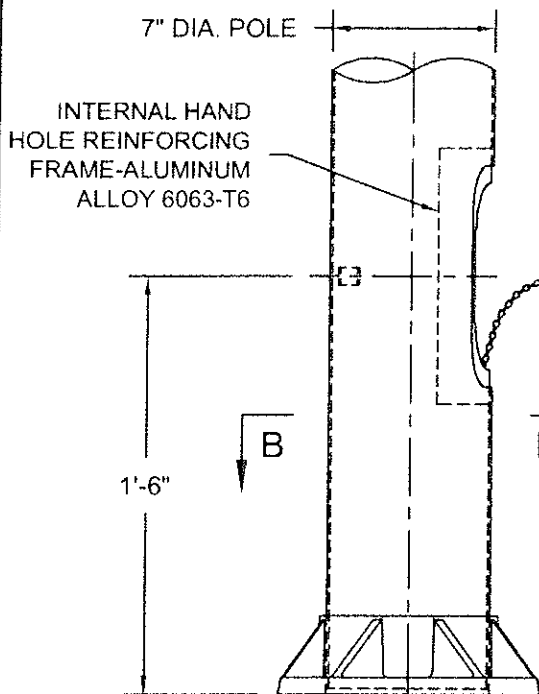
1" WIDE x 1/4" ALUM.
GROUND BAR WITH
3/8"-16 TAPPED HOLE

AWS-ALGM-F13



SECTION C-C

12" LONG BRASS KEEPER
CHAIN MECHANICALLY
FASTENED TO THE INSIDE
ENTER OF THE HANDHOLE
COVER AND TO THE INSIDE
BOTTOM OF HANDHOLE

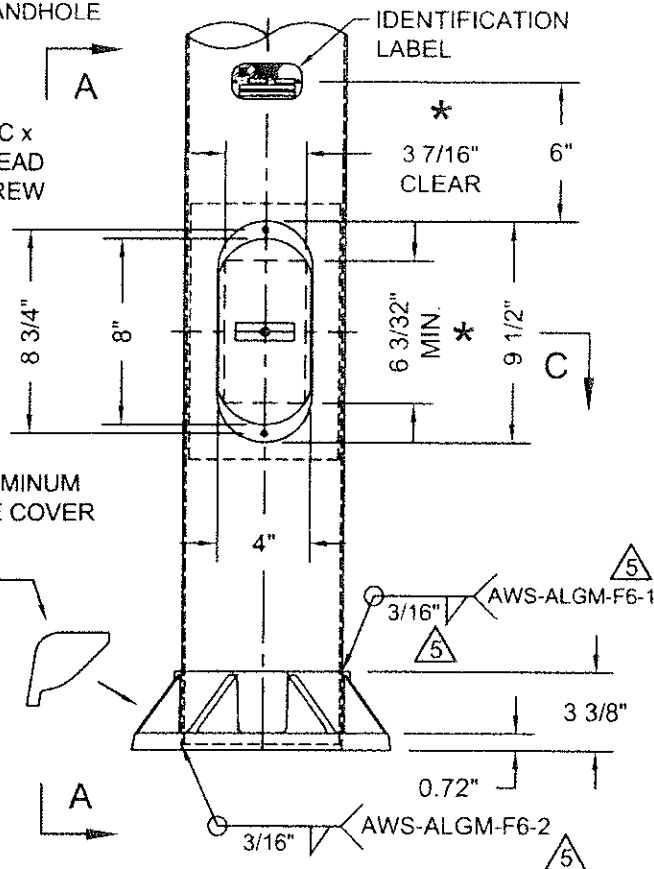


VIEW A-A

(4) CAST ALUMINUM
BOLT COVERS
ATTACHED WITH (4)
1/4" x 1/2" SST HEX.
HEAD SCREWS

ANCHOR BASE

FLUSH ALUMINUM
HANDHOLE COVER



ELEVATION

HH COVER NOT SHOWN

* NOTE: MUST MAINTAIN A
3 7/16" x 6 3/32" CLEAR
OPENING IN HANDHOLE

DO NOT SCALE

valmont

Structures Division, Valmont Industries, Inc.
20805 Eaton Ave Farmington,
Minnesota 55024-0228
Phone: (651) 463-8990 (800) 899-7577
Fax: (651) 463-3349

TITLE:
N 7" DIA. POLE BASE & 4" x 8" HANDHOLE

MODEL NO.:
MATERIAL: ALUMINUM ALLOY
FINISH: SATIN GROUND
PROJECT: CITY OF OVERLAND PARK, KS
SOLD TO:
SHIP TO:
P.O. NO:
REP: POWER EQUIPMENT

QTY:

DWN BY:

R.J.

CHK'D BY:

APPR BY:

DATE:

05-14-03

DWG NO:

KS-86

PAGE:

19/25

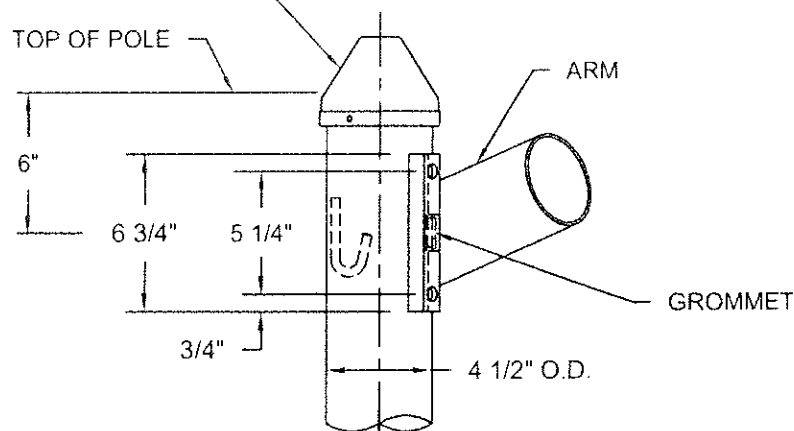
CONFIDENTIAL

The information contained in this drawing is privileged and confidential,
and may be protected from disclosure. Please be aware that any use or
dissemination of this drawing may be subject to legal restriction or sanction

REV	DATE	REVISION DESCRIPTION
5	03-28-14	REV'D V-GROUND, WELD SIZE AND PROCEDURE
4	11-25-08	ANCHOR BASE WELDING
3	10-20-06	WELDING

S.L.	BY
R.J.	KS-86
R.J.	PAGE:
BY	19/25

SPUN ALUMINUM POLE CAP WITH
(3) 1/4"-20NC x 1/2" SST HEX.
SOCKET HEADLESS SET SCREWS



ARM MOUNTING

TIGHTENING SEQUENCE
FOR Ø1/2" STAINLESS
STEEL BOLTS.

- TIGHTEN WITH HAND.
- APPLY 37.50 ft.lbs
- APPLY 47.50 ft.lbs
- APPLY 50.00 ft.lbs

(4) 1/2" x 1 1/2" LONG SST HEX. HEAD BOLTS

(4) 1/2" SST LOCK WASHERS

(4) 1/2" SST FLAT WASHERS

DRILL 1 1/4" DIA. HOLE
FOR 1" I.D. GROMMET

(4) 1/2" RIVNUTS INSTALLED IN
(4) 21/32" DRILLED HOLES

EXTRUDED ARM PLATE
ALUM. ALLOY 6063-T6

TYPICAL SECTION

DO NOT SCALE

valmont 

Structures Division, Valmont Industries, Inc.
20805 Eaton Ave Farmington,
Minnesota 55024-0228
Phone: (651) 463-8990 (800) 899-7577
Fax: (651) 463-3349

TITLE: N TYPE A - SINGLE MEMBER ARM ATTACHMENT - SINGLE

MODEL NO.:
MATERIAL: ALUMINUM ALLOY
FINISH: SATIN GROUND
PROJECT: CITY OF OVERLAND PARK, KS
SOLD TO:
SHIP TO:
P.O. NO:
REP: POWER EQUIPMENT

QTY:
OWN BY:
CHK'D BY:
APPR BY:
DATE:
05-14-03

07-13-10 SINGLE & TWIN SEPARATED R.J.
10-20-06 J HOOK WELDING R.J.
10-15-04 J HOOK ADDED R.J.

DWG NO:
KS-83-S
PAGE:

REV	DATE	REVISION DESCRIPTION
BY	14 / 25	

BY 14 / 25

****CONFIDENTIAL****

The information contained in this drawing is privileged and confidential,
and may be protected from disclosure. Please be aware that any use or
dissemination of this drawing may be subject to legal restriction or sanction.