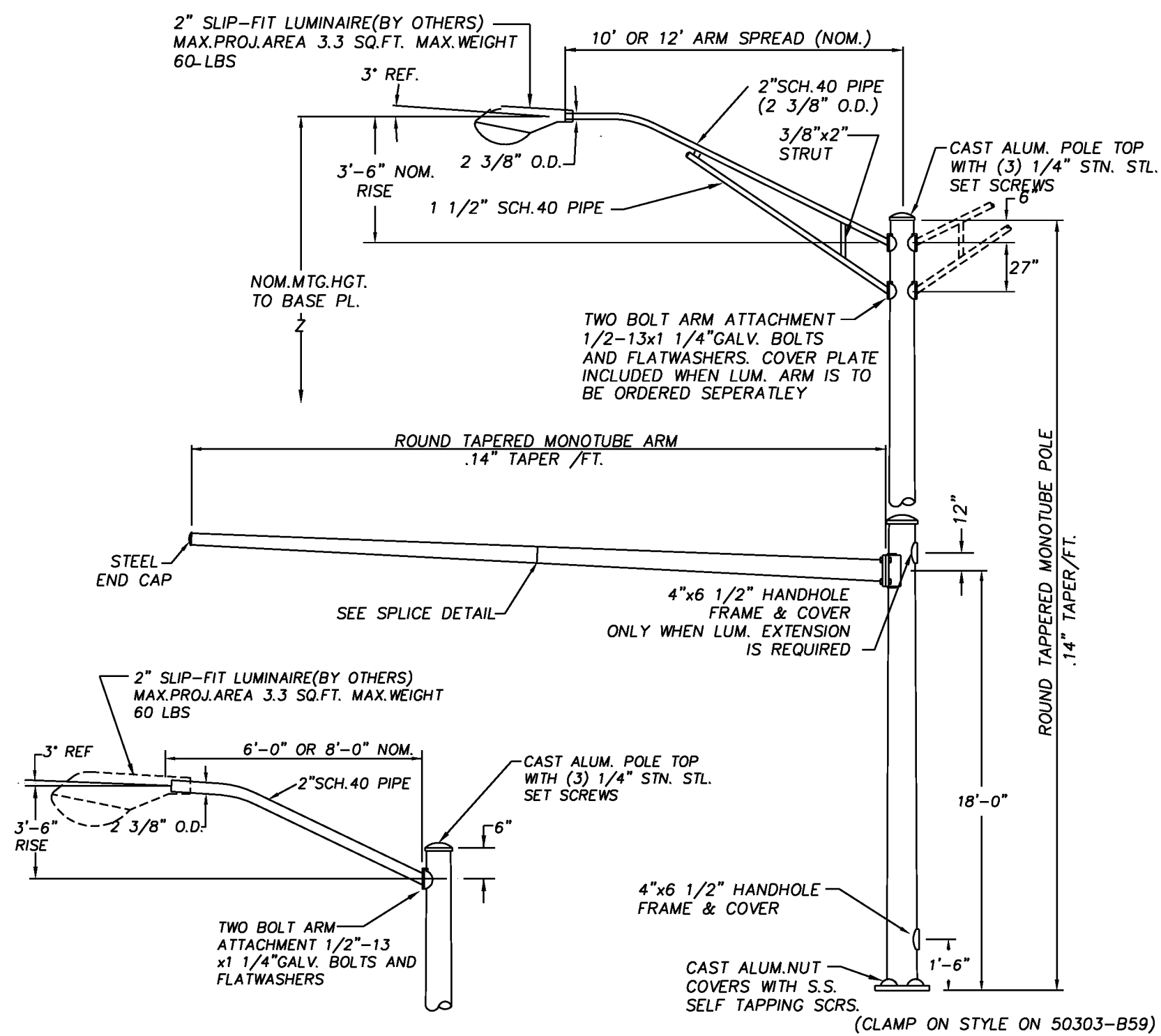
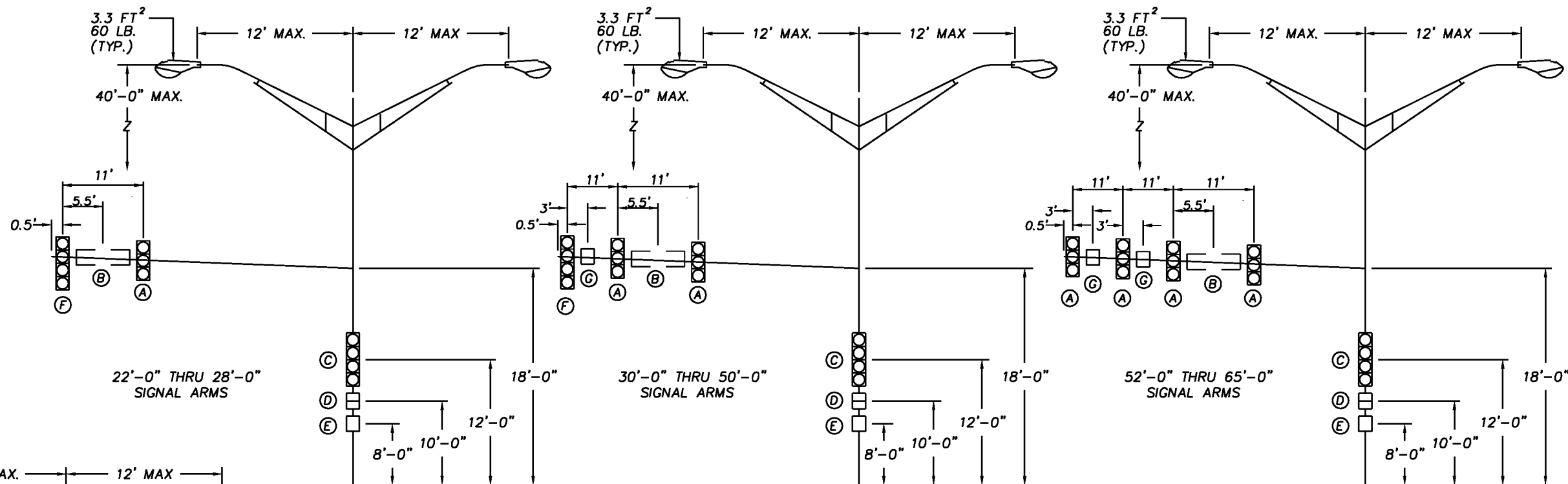


DESIGN NO.	TRAFFIC ARM LGTH	TRAFFIC ARM TUBE SIZE	LUMINAIRE ARMS	LUM. MTG HEIGHT	POLE SIZE
50915-Y1	14'-0" THRU 20'-0"	7E-7.0x4.2x20'-0"	NONE REQ'D	---	7E-10.18x7.52x19'-0"
50915-Y2			SINGLE	30'-0"	7E-10.18x6.4x27'-0"
50915-Y3			SINGLE	35'-0"	7E-10.18x5.7x32'-0"
50915-Y4			SINGLE	40'-0"	7E-10.18x5.0x37'-0"
50915-Y5			TWIN	30'-0"	7E-10.18x6.4x27'-0"
50915-Y6			TWIN	35'-0"	7E-10.18x5.7x32'-0"
50915-Y7			TWIN	40'-0"	7E-10.18x5.0x37'-0"
50915-Y8	22'-0" THRU 28'-0"	7E-8.0x4.08x28'-0"	NONE REQ'D	---	7E-11.25x8.59x19'-0"
50915-Y9			SINGLE	30'-0"	7E-11.25x7.47x27'-0"
50915-Y10			SINGLE	35'-0"	7E-11.25x6.77x32'-0"
50915-Y11			SINGLE	40'-0"	7E-11.25x6.07x37'-0"
50915-Y12			TWIN	30'-0"	7E-11.25x7.47x27'-0"
50915-Y13			TWIN	35'-0"	7E-11.25x6.77x32'-0"
50915-Y14			TWIN	40'-0"	7E-11.25x6.07x37'-0"
50915-Y15	30'-0" THRU 36'-0"	7E-9.0x3.96x36'-0"	NONE REQ'D	---	7E-13.0x10.34x19'-0"
50915-Y16			SINGLE	30'-0"	7E-13.0x9.22x27'-0"
50915-Y17			SINGLE	35'-0"	7E-13.0x8.52x32'-0"
50915-Y18			SINGLE	40'-0"	7E-13.0x7.82x37'-0"
50915-Y19			TWIN	30'-0"	7E-13.0x9.22x27'-0"
50915-Y20			TWIN	35'-0"	7E-13.0x8.52x32'-0"
50915-Y21			TWIN	40'-0"	7E-13.0x7.82x37'-0"
50915-Y22	38'-0" THRU 44'-0"	7E-10.25x7.06x22'-9" 7E-7.06x4.09x21'-3"	NONE REQ'D	---	3E-12.5x9.84x19'-0"
50915-Y23			SINGLE	30'-0"	3E-12.5x8.72x27'-0"
50915-Y24			SINGLE	35'-0"	3E-12.5x8.02x32'-0"
50915-Y25			SINGLE	40'-0"	3E-12.5x7.32x37'-0"
50915-Y26			TWIN	30'-0"	3E-12.5x8.72x27'-0"
50915-Y27			TWIN	35'-0"	3E-12.5x8.02x32'-0"
50915-Y28			TWIN	40'-0"	3E-12.5x7.32x37'-0"
50915-Y29	46'-0" THRU 50'-0"	7E-11.25x8.06x22'-9" 7E-8.06x4.24x27'-3"	NONE REQ'D	---	3E-13.25x10.59x19'-0"
50915-Y30			SINGLE	30'-0"	3E-13.25x9.47x27'-0"
50915-Y31			SINGLE	35'-0"	3E-13.25x8.77x32'-0"
50915-Y32			SINGLE	40'-0"	3E-13.25x8.07x37'-0"
50915-Y33			TWIN	30'-0"	3E-13.25x9.47x27'-0"
50915-Y34			TWIN	35'-0"	3E-13.25x8.77x32'-0"
50915-Y35			TWIN	40'-0"	3E-13.25x8.07x37'-0"
50915-Y36	52'-0" THRU 55'-0"	7E-12.75x8.30x31'-9" 7E-8.30x5.05x23'-3"	NONE REQ'D	---	0E-14.0x11.34x19'-0"
50915-Y37			SINGLE	30'-0"	0E-14.0x10.22x27'-0"
50915-Y38			SINGLE	35'-0"	0E-14.0x9.52x32'-0"
50915-Y39			SINGLE	40'-0"	0E-14.0x8.82x37'-0"
50915-Y40			TWIN	30'-0"	0E-14.0x10.22x27'-0"
50915-Y41			TWIN	35'-0"	0E-14.0x9.52x32'-0"
50915-Y42			TWIN	40'-0"	0E-14.0x8.82x37'-0"
50915-Y108	60'-0"	3E-11.80x8.30x25'-0" 3E-8.30x3.40x35'-0"	NONE REQ'D	---	0E-15.75x13.09x19'-0"
50915-Y109			SINGLE	30'-0"	0E-15.75x11.97x27'-0"
50915-Y110			SINGLE	35'-0"	0E-15.75x11.27x32'-0"
50915-Y111			SINGLE	40'-0"	0E-15.75x10.57x37'-0"
50915-Y112			TWIN	30'-0"	0E-15.75x11.97x27'-0"
50915-Y113			TWIN	35'-0"	0E-15.75x11.27x32'-0"
50915-Y114			TWIN	40'-0"	0E-15.75x10.57x37'-0"
50915-Y115	65'-0"	3E-12.50x8.30x30'-0" 3E-8.30x3.40x35'-0"	NONE REQ'D	---	0E-15.75x13.09x19'-0"
50915-Y116			SINGLE	30'-0"	0E-15.75x11.97x27'-0"
50915-Y117			SINGLE	35'-0"	0E-15.75x11.27x32'-0"
50915-Y118			SINGLE	40'-0"	0E-15.75x10.57x37'-0"
50915-Y119			TWIN	30'-0"	0E-15.75x11.97x27'-0"
50915-Y120			TWIN	35'-0"	0E-15.75x11.27x32'-0"
50915-Y121			TWIN	40'-0"	0E-15.75x10.57x37'-0"



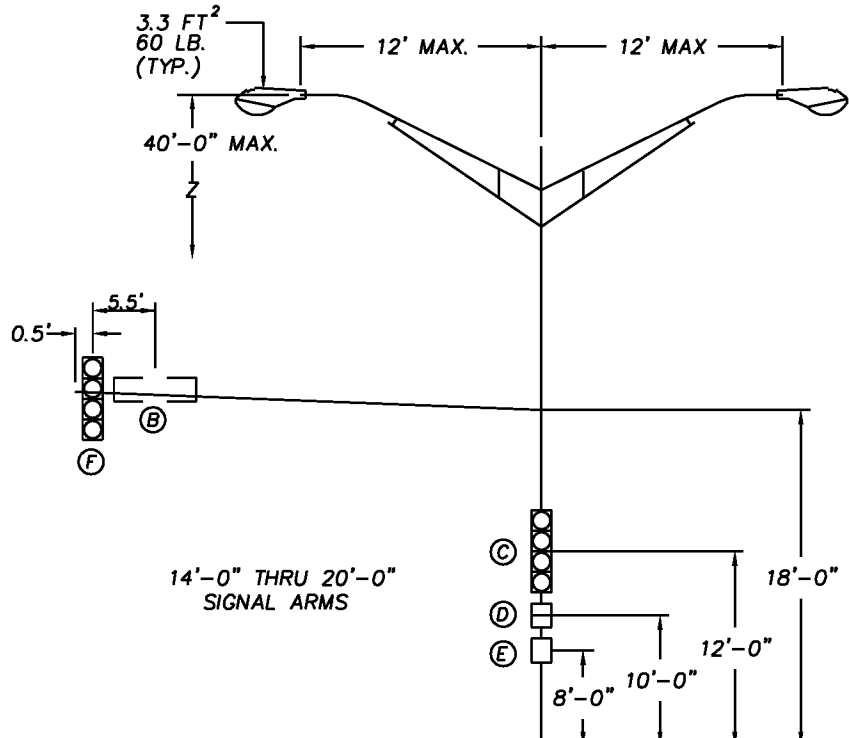
R5	H.HOLE ABOVE MAST ARM WAS AT 6". UPDATED PER CUSTOMER REQUEST	11/18/03 RLK JAB	STEEL TRAFFIC & LIGHTING STURCTURES CITY OF LENEXA, KANSAS CITY OF OVERLAND PARK, KANSAS
R4	ADDED H.HOLE ABOVE MAST ARM, MOVED GRD NUT PER CUST. REQUEST.	11/4/03 RLK JAB	LOF _____ ENG. REF. # _____ REQ. # C90-127 S.O. # _____ CAD # 1576A93
R3	0558 REV. TO GRADE A TUBES. 1696 REV. SHT. 1 & 3	6/18/96 BJT GMP	Union Metal CORPORATION R05
REVISIONS			DRAWN T.L.BOWE DATE 11/13/90 CHECKED JMP DRAWING NO. 50915-B1 SHT 1 OF 3



LOADING INFORMATION

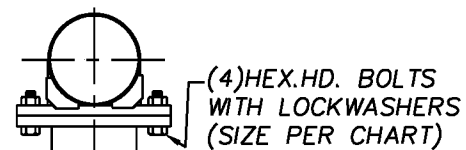
DESIGN CRITERIA:
 1985 AASHTO STANDARD SPECIFICATIONS
 FOR STRUCTURAL SUPPORTS FOR HIGHWAY
 SIGNS, LUMINAIRES, AND TRAFFIC SIGNALS

WIND VELOCITY:
 80 MPH ISOTACH.

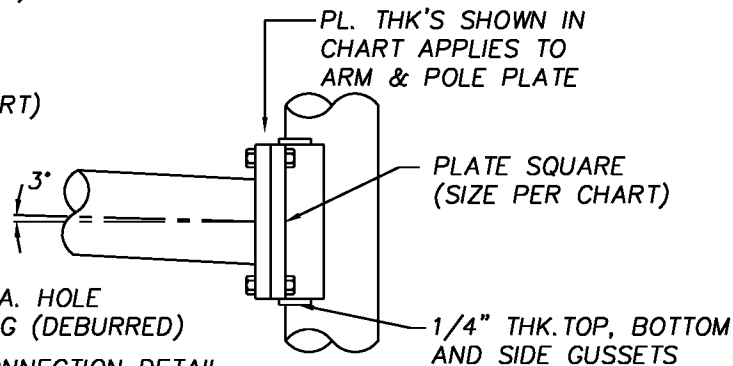
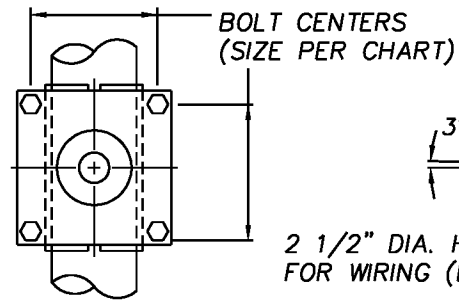


DEVICE	DESCRIPTION	PROJ. AREA (FT. ²)	WEIGHT (LBS)
(A)	12"-3 SEC. SIGNAL WITH BACKPLATES	8.67	30
(B)	18"x72" STREET NAME SIGN	9.00	20
(C)	12"-4 SEC. SIGNAL WITH NO BACKPLATES	5.44	40
(D)	DUAL-2 SEC. PEDESTRIAN SIGNAL	8.00	40
(E)	30"x30" POLE MOUNTED SIGN	6.25	13
(F)	12-4 SEC. SIGNAL WITH BACKPLATES	11.00	40
(G)	24"x30" SIGNAL ARM MOUNTED SIGN	5.00	10

STEEL TRAFFIC & LIGHTING STRUCTURES CITY OF LENEXA, KANSAS CITY OF OVERLAND PARK, KANSAS		LOF _____	ENG. REF. # _____
		REQ. # C90-127	S.O. # _____ CAD# 1576A93
Union Metal CORPORATION		R05	
		DRAWN T.L.BOWE DATE 11/13/90 CHECKED JMP	DRAWING NO. 50915-B1 SHT 2 OF 3
REVISIONS			

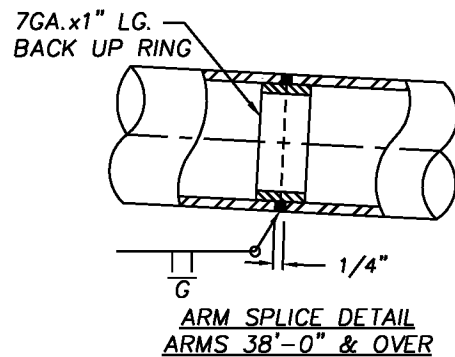


TILT GUSSETS IN AS
REQUIRED FOR HARDWARE
CLEARANCE

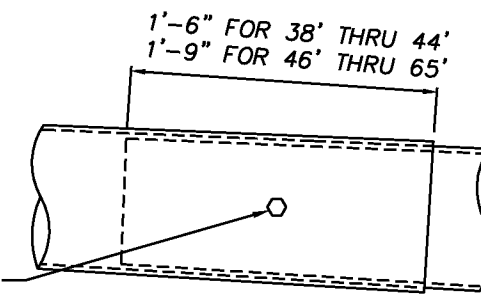


TRAFFIC ARM CONNECTION DETAIL

1/8" THK STEEL COVER PLATE
W/HARDWARE INCLUDED WHEN MAST ARM NOT REQUIRED



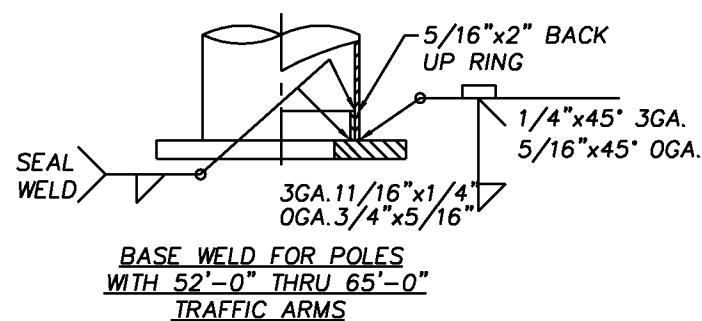
SPLICE DETAIL SHOWN WILL BE
USED FOR 38'-0" THRU 65'-0" ARMS
UNLESS OTHERWISE SPECIFIED. A TELESCOPIC
SLIP JOINT CAN BE PROVIDED WHICH MUST
BE SPECIFIED WITH PURCHASE ORDER.
WHEN THIS IS SPECIFIED GA. & DIA. OF
ARM TUBE AT POLE CONNECTION WILL
BE MAINTAINED AND TUBE SIZES ADJUSTED
AS REQUIRED FOR TELESCOPIC JOINT.



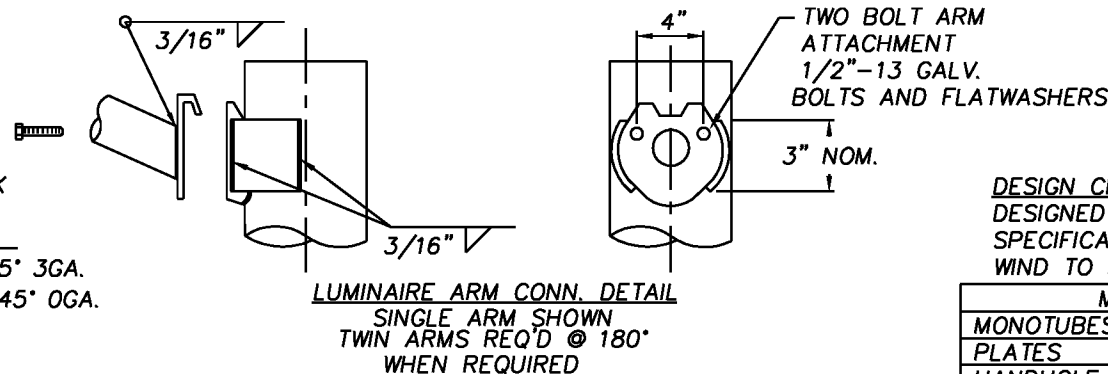
1/2" DIA. GALV. STUD
WITH (2) "ANCO LOCKNUTS

OPTIONAL TELESCOPIC FIELD JOINT
(REQ'D FOR ARMS OVER 38'-0")
(SEE NOTE)

U.M. DESIGN NUMBER	TRAFFIC ARM CONNECTION DATA			
	BOLT CENTERS	PLATE SQUARE	PLATE THK'S.	BOLT SIZE
50915-Y1 THRU 50915-Y7	10 1/2"	12 3/4"	1 1/4"	3/4" DIA.
50915-Y8 THRU 50915-Y14	11 1/2"	14 1/4"	1 1/2"	1" DIA.
50915-Y15 THRU 50915-Y21	13 1/2"	16 1/4"	1 1/2"	1" DIA.
50915-Y22 THRU 50915-Y28	14"	16 3/4"	1 1/2"	1" DIA.
50915-Y29 THRU 50915-Y35	15"	17 3/4"	1 3/4"	1" DIA.
50915-Y36 THRU 50915-Y42	16"	18 3/4"	1 3/4"	1" DIA.
50915-Y108 THRU 50915-Y121	16"	19 1/4"	2"	1 1/4" DIA.



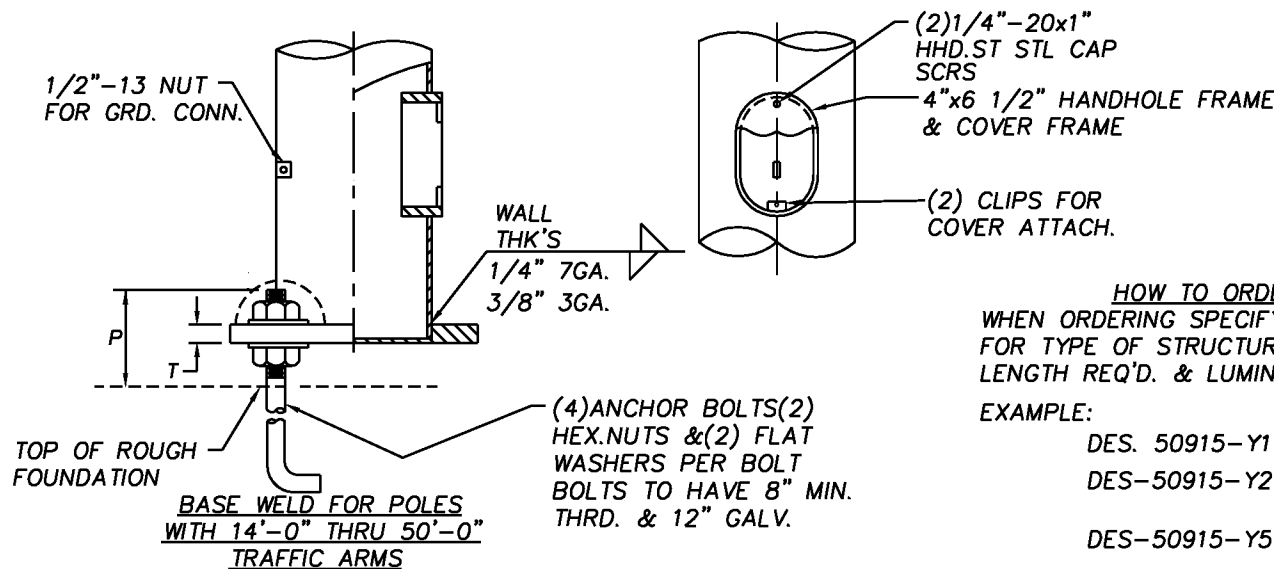
BASE WELD FOR POLES
WITH 52'-0" THRU 65'-0"
TRAFFIC ARMS



LUMINAIRE ARM CONN. DETAIL
SINGLE ARM SHOWN
TWIN ARMS REQ'D @ 180°
WHEN REQUIRED

DESIGN CRITERIA:
DESIGNED FOR 1985 AASHTO STANDARD
SPECIFICATIONS FOR 80 M.P.H.
WIND TO SUPPORT LOADS INDICATED

MATERIAL SPECIFICATION	
MONOTUBES	ASTM-A595 GR.A
PLATES	ASTM-A36
HANDHOLE FRAME	ASTM-A36
HANDHOLE COVER	C1010 STEEL
POLE TOP	ASTM-B26(356F OR 43)
MISC HARDWARE S.S.	AISI-300 SERIES (18-8)
PIPE	ASTM-A501
TRAFFIC ARM BOLTS	ASTM-A325
TRAFFIC ARM NUTS	ASTM-A194 GR.2H
ANCHOR BOLTS	ASTM-A36 M55
ANCHOR BOLT NUTS	ASTM-A563 GR.A
LUM. ARM CONN BOLTS	ASTM-A307
SIMPLEX PLATES	ASTM-A36
STRUCTURE FINISH	GALV TO ASTM-A123
HARDWARE FINISH	GALV TO ASTM-A153



BASE WELD FOR POLES
WITH 14'-0" THRU 50'-0"
TRAFFIC ARMS

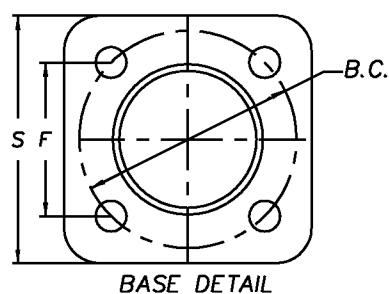
(4) ANCHOR BOLTS (2)
HEX. NUTS & (2) FLAT
WASHERS PER BOLT
BOLTS TO HAVE 8" MIN.
THRD. & 12" GALV.

HOW TO ORDER
WHEN ORDERING SPECIFY DESIGN NO.
FOR TYPE OF STRUCTURE REQ'D., TRAFFIC ARM
LENGTH REQ'D. & LUMINAIRE ARM REQ'D.

EXAMPLE:

DES. 50915-Y1 -18 FT. _ _ _ _ (INDICATES 18' TRAFFIC ARM, NO LUM. ARM.)
DES-50915-Y2 -18 FT., 12 FT. _ _ _ (INDICATES 18' TRAFFIC ARM WITH SINGLE
12' LUM. ARM AT 30' M.H.)
DES-50915-Y5 -18 FT.-12 FT., 12 FT. (INDICATES 18' TRAFFIC ARM WITH TWIN
12' LUM. ARMS AT 30' M.H.)

BASE DATA						
POLE DIA.	B.C.	F	P	S	T	ANCHOR BOLT SIZE
7E-10.18	13 1/2"	9 9/16"	6 1/2"	14"	1 1/2"	1 1/2"x54"x6"
7E-11.25	15"	10 5/8"	6 1/2"	16 1/2"	1 1/2"	1 1/2"x54"x6"
7E-13.00	17"	12"	6 1/2"	18"	1 1/2"	1 1/2"x54"x6"
3E-12.50	17"	12"	7 1/2"	18"	1 3/4"	1 3/4"x84"x6"
3E-13.25	17 1/2"	12 3/8"	7 1/2"	18"	1 3/4"	1 3/4"x84"x6"
OE-14.00	19"	13 7/16"	7 1/2"	19"	1 3/4"	1 3/4"x84"x6"
OE-15.75	22 1/2"	15 15/16"	8 1/4"	23 1/2"	2"	2"x84"x6"



BASE DETAIL

REVISIONS		STEEL TRAFFIC & LIGHTING STRUCTURES CITY OF LENEXA, KANSAS CITY OF OVERLAND PARK, KANSAS	
LOF	REQ.#	ENG. REF.#	CAD#
	C90-127	S.O.#	1576A93
DRAWN T.L.BOWE		DRAWING NO. 50915-B1	
DATE 11/13/90		SHT 3 OF 3	
CHECKED JMP			