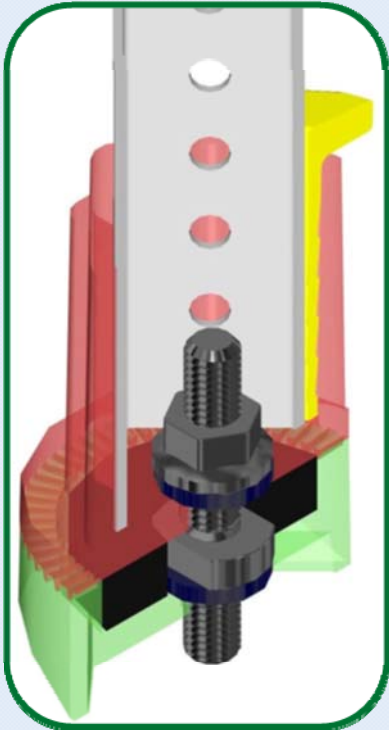


Kleen Break Model 425 Sign Post Coupler

NCHRP 350 Tested - FHWA Accepted (SS-131)

Begin saving money in material & labor from first impact.



The key to the Xcessories Squared Kleen Break system is in its unique design.

- The Kleen Break can be installed using: **Stem base in direct drive soil anchor** (Figure 1 on reverse side), **Stem base imbedded flush mount** in new concrete where tripping hazards are a concern (Figure 2 on reverse side), or our **concrete surface mount** (Figure 3 on reverse side).
- The Kleen Break system allows for **360° indexing**, for proper sign orientation after anchoring portion is permanently set.
- When properly installed, the Kleen Break supports the sign post at **100% of the strength of the post for windloading**, yet breaks away per NCHRP 350 criteria when impacted.
- After impact, all components of the Kleen Break system are **reusable**, with the exception of the shear bolt.



www.x-sqrd.com



(Fig. 1) Stem Base in Direct Drive Soil Anchor



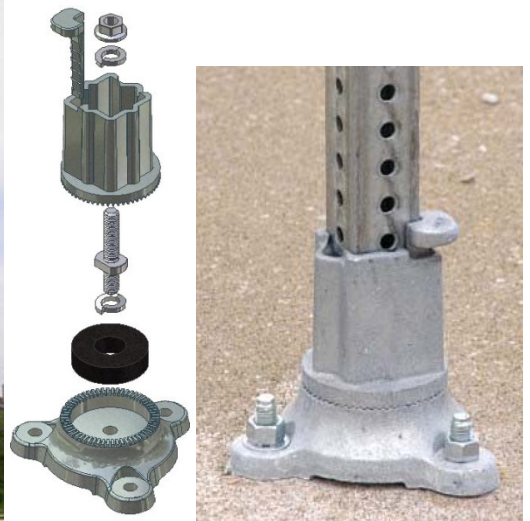
All components of the Kleen Break System are reusable after impact, with the exception of the Shear Bolt. This system saves replacement costs in material and labor.



Kleen Break Shear Bolt Wrench



(Fig. 2) Stem Base Flush Mounted in Concrete



(Fig 3) Concrete Surface Mount