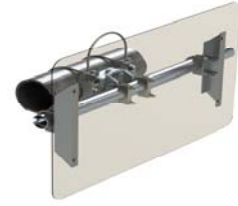


## 23" Sign Kit (Cable Clamp Attachment)



- \* Galvanized steel cable attachment system
- \* Stainless steel hardware
- \* Capable of horizontal or vertical mounting
- \* Multiple tube length selections for different size signs
- \* Multiple cable lengths to accommodate 2"-17" masts
- \* Includes: Clamp assembly, Tube kit, and mounting channels
- \* Supplied in natural Aluminum finish

Part Number	Band Length	Tube Length	List Price	Description
SBC66-SBK-18TK 23	66	18		Sign Kit 23" Channels - 18" Tube
SBC66-SBK-24TK 23	66	24		Sign Kit 23" Channels - 24" Tube
SBC66-SBK-46TK 23	66	46		Sign Kit 23" Channels - 46" Tube
SBC66-SBK-60TK 23	66	60		Sign Kit 23" Channels - 60" Tube
SBC66-SBK-74TK 23	66	74		Sign Kit 23" Channels - 74" Tube
SBC66-SBK-96TK 23	66	96		Sign Kit 23" Channels - 96" Tube
SBC90-SBK-18TK 23	90	18		Sign Kit 23" Channels - 18" Tube
SBC90-SBK-24TK 23	90	24		Sign Kit 23" Channels - 24" Tube
SBC90-SBK-46TK 23	90	46		Sign Kit 23" Channels - 46" Tube
SBC90-SBK-60TK 23	90	60		Sign Kit 23" Channels - 60" Tube
SBC90-SBK-74TK 23	90	74		Sign Kit 23" Channels - 74" Tube
SBC90-SBK-96TK 23	90	96		Sign Kit 23" Channels - 96" Tube
SBC120-SBK-18TK 23	120	18		Sign Kit 23" Channels - 18" Tube
SBC120-SBK-24TK 23	120	24		Sign Kit 23" Channels - 24" Tube
SBC120-SBK-46TK 23	120	46		Sign Kit 23" Channels - 46" Tube
SBC120-SBK-60TK 23	120	60		Sign Kit 23" Channels - 60" Tube
SBC120-SBK-74TK 23	120	74		Sign Kit 23" Channels - 74" Tube
SBC120-SBK-96TK 23	120	96		Sign Kit 23" Channels - 96" Tube
SBC165-SBK-18TK 23	165	18		Sign Kit 23" Channels - 18" Tube
SBC165-SBK-24TK 23	165	24		Sign Kit 23" Channels - 24" Tube
SBC165-SBK-46TK 23	165	46		Sign Kit 23" Channels - 46" Tube
SBC165-SBK-60TK 23	165	60		Sign Kit 23" Channels - 60" Tube
SBC165-SBK-74TK 23	165	74		Sign Kit 23" Channels - 74" Tube
SBC165-SBK-96TK 23	165	96		Sign Kit 23" Channels - 96" Tube

Sign not to exceed 2000 Square inches per clamp

18" - 46" models have 2 mounting channels

60" - 74" models have 3 mounting channels

96" model has 4 mounting channels and 2 clamp assemblies

Customer to supply hardware to attach sign to mounting channels