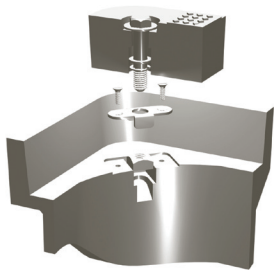
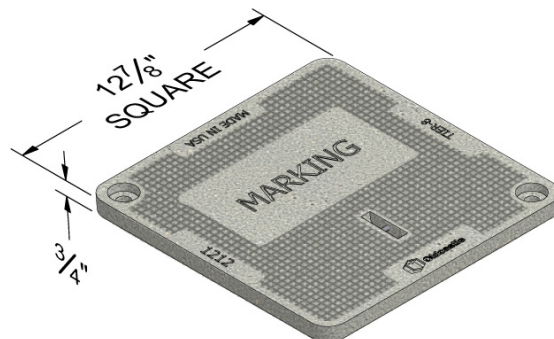


1212



Bolt Down Detail

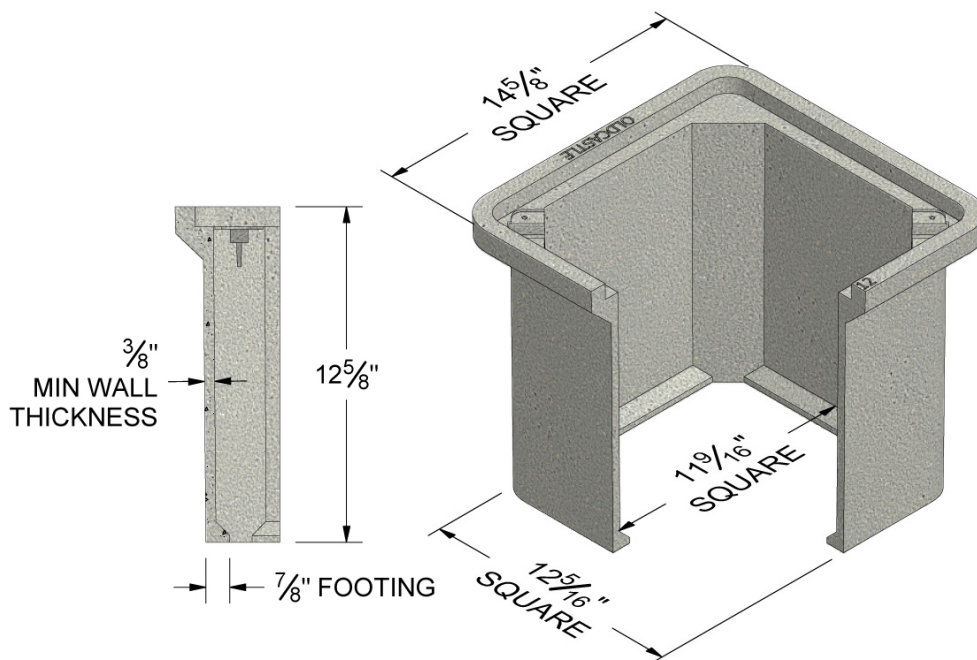


COVER:

Style:	Flush Solid
Material:	Polymer Concrete
Model:	12" x 12"
Weight:	10 lbs
Std. Fasteners:	1/2-13 Stainless Steel Hex Head Bolt, Washer and Floating Nut
Options:	Logos and Special Markings
Surface:	Slip Resistant & Marked*
Coefficient of Friction:	>0.6 ASTM 1028
Performance:	ANSI/SCTE-77 Tier 8, WUC 3.6, ASTM C857 A-8

BODY:

Material:	Polymer Concrete
Model:	12" x 12"
Weight:	12" Depth: 32 lbs
Wall Type:	Straight
Performance:	ANSI/SCTE-77 Tier 22, WUC 3.6, ASTM C857 A-16



Medium Duty:
Non-deliberate Traffic

For use in non-vehicular traffic situations only.

Actual load rating is determined by the box and cover combination. Weights and dimensions may vary slightly.

* Cover comes standard with permanent markings for manufacturer, load rating, model size and manufacturing location.

Contact your Oldcastle Enclosure Solutions Distribution Center for specific information and additional options.

1212

Options:

Available Polymer Covers:

Flush Solid (Standard)

Fastener Options for Polymer Covers:

Penta Head Bolt
Oldcastle Enclosures Vandal Proof Bolt
Penta Coil Thread Bolt
Captive Bolt Retainer

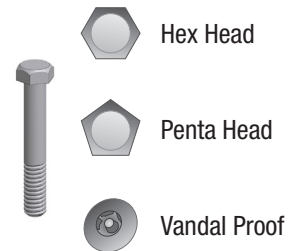
Add on Options:

EMS Marker (E)
Mouseholes/Knockouts
Rack Mount (A)
Cable Racks/Cable Arms (B)
Unistrut (C)
Pulling Eye - 1,000 lb and 3,000 lb (D)
Ground Buss (F)
Dividers
Racking Provision
Lid Gaskets*
Solid Bottom
Bodies are Stackable (with tallest body on bottom)

*Lid Gaskets inhibit water flow into the box, they do not make Enclosure fully waterproof.



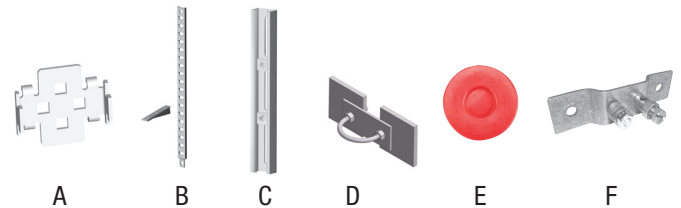
Polymer Cover



Hex Head

Penta Head

Vandal Proof



A

B

C

D

E

F

Raw Material Specifications:

Standard Test Method	Properties of Raw Material	ASTM Designation	Typical Value
Compressive Strength of Polymer Concretes	Compressive Strength	C 579	> 11,000 psi
Flexural Properties of Plastic Materials	Flexural Strength	D 790	> 3,000 psi
Resistance of Plastics to Chemical Reagents	Chemical Resistance	D 543	Retain > 75% of original strength
Impact Resistance by Means of a Falling Weight	Impact Resistance	D 2444	> 70 ft-lb
Static Coefficient of Friction	Friction Coefficient	C 1028	> 0.6

ASTM Specifications shall be the current revision

Test Reports available on request

The Rural Utility Service (RUS) is a department of the US Department of Agriculture organized to facilitate rural developments. You will find Oldcastle Enclosure Solutions brand enclosures listed by the RUS. All Oldcastle Enclosure Solutions brand enclosures conform to the RUS "Tamper Resistant" fastener design for buried pedestals.

Product Load Rating:



Medium Duty : Non-deliberate Traffic

For use in non-vehicular traffic situations only.

Note:

Actual load rating is determined by the box and cover combination. Weights and dimensions may vary slightly

All information contained on this sheet is current at the time of printing.

Oldcastle Precast, Inc. reserves the right to discontinue or update product information without notice.

