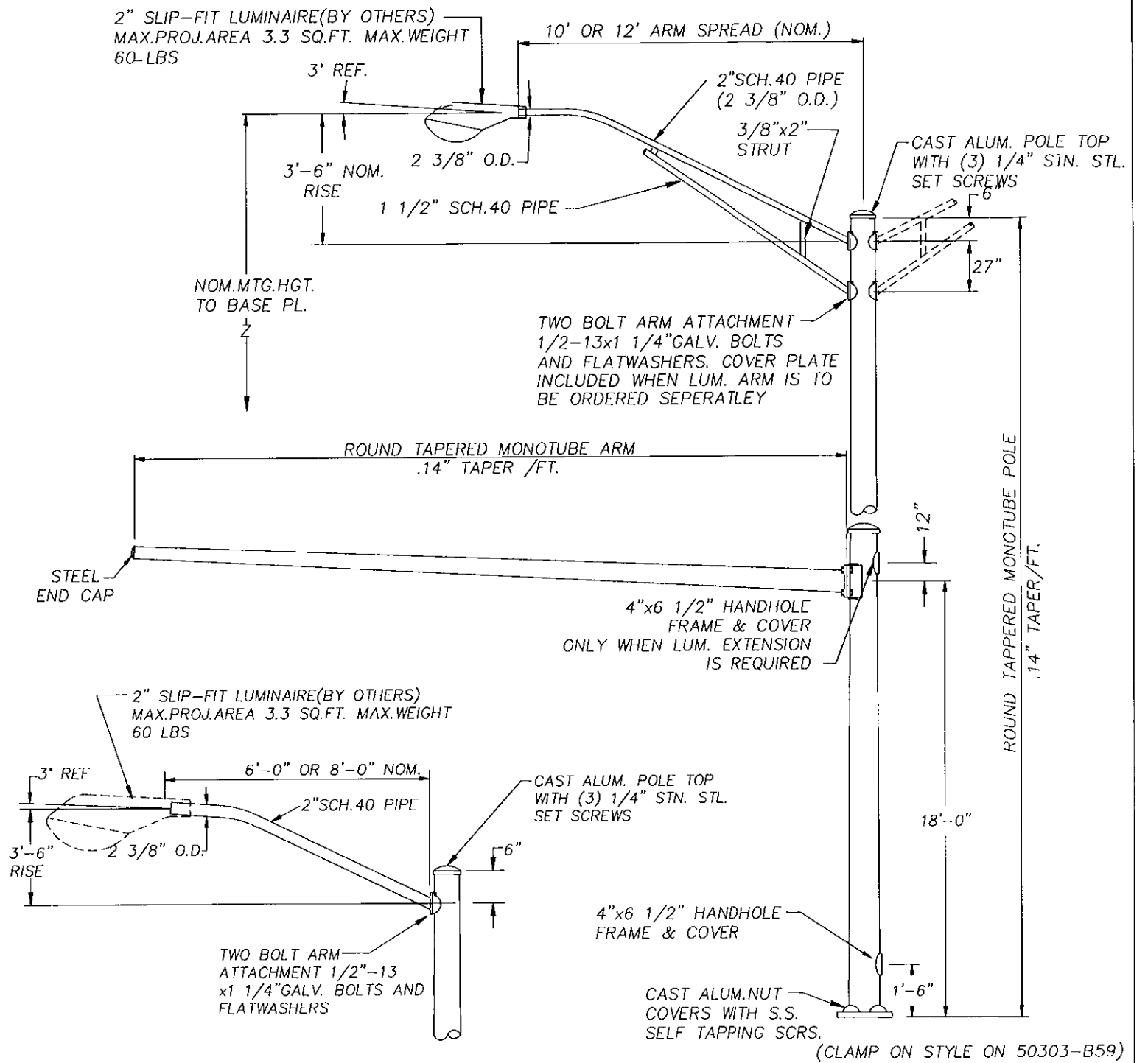


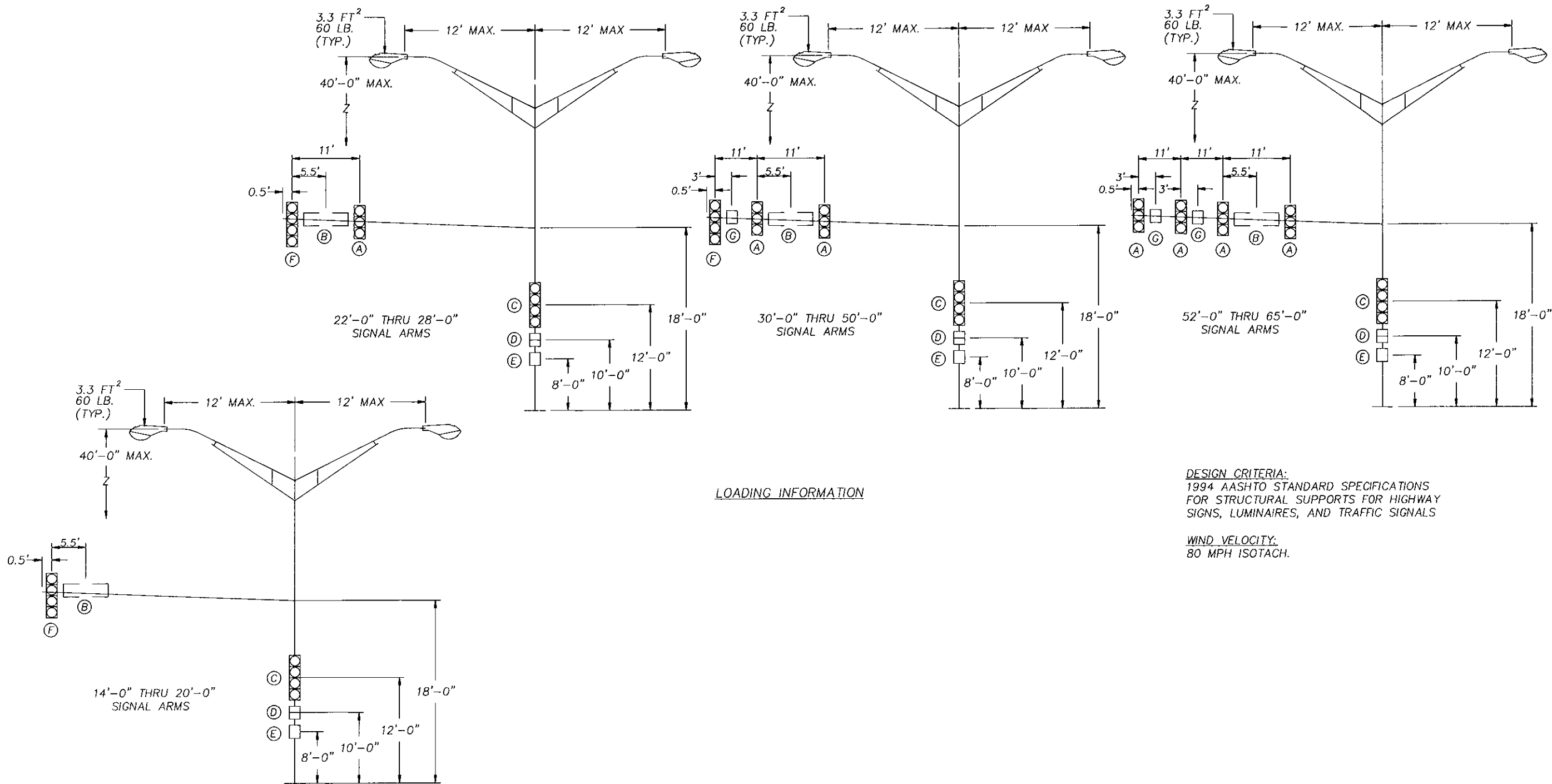
QTY	DESIGN NO.	TRAFFIC ARM LGTH	TELESCOPIC JOINT TRAFFIC ARM TUBE SIZES	JOINT LENGTH	LUMINAIRE ARMS	LUM. MTG HEIGHT	POLE SIZE			
	50915-Y1	14'-0" THRU 20'-0"	7E-7.0x4.2x20'-0"	-	NONE REQ'D		7E-10.18x7.52x19'-0"			
	50915-Y2				SINGLE	30'-0"	7E-10.18x6.4x27'-0"			
	50915-Y3				SINGLE	35'-0"	7E-10.18x5.7x32'-0"			
	50915-Y4				SINGLE	40'-0"	7E-10.18x5.0x37'-0"			
	50915-Y5				TWIN	30'-0"	7E-10.18x6.4x27'-0"			
	50915-Y6				TWIN	35'-0"	7E-10.18x5.7x32'-0"			
	50915-Y7				TWIN	40'-0"	7E-10.18x5.0x37'-0"			
	50915-Y8				NONE REQ'D		7E-11.25x8.59x19'-0"			
	50915-Y9	22'-0" THRU 28'-0"	7E-8.0x4.08x28'-0"	-	SINGLE	30'-0"	7E-11.25x7.47x27'-0"			
	50915-Y10				SINGLE	35'-0"	7E-11.25x6.77x32'-0"			
	50915-Y11				SINGLE	40'-0"	7E-11.25x6.07x37'-0"			
	50915-Y12				TWIN	30'-0"	7E-11.25x7.47x27'-0"			
	50915-Y13				TWIN	35'-0"	7E-11.25x6.77x32'-0"			
	50915-Y14				TWIN	40'-0"	7E-11.25x6.07x37'-0"			
	50915-Y15				NONE REQ'D		7E-13.0x10.34x19'-0"			
	50915-Y16				30'-0" THRU 36'-0"	7E-9.0x3.96x36'-0"	-	SINGLE	30'-0"	7E-13.0x9.22x27'-0"
	50915-Y17	SINGLE	35'-0"	7E-13.0x8.52x32'-0"						
	50915-Y18	SINGLE	40'-0"	7E-13.0x7.82x37'-0"						
	50915-Y19	TWIN	30'-0"	7E-13.0x9.22x27'-0"						
	50915-Y20	TWIN	35'-0"	7E-13.0x8.52x32'-0"						
	50915-Y21	TWIN	40'-0"	7E-13.0x7.82x37'-0"						
	50915-Y22	NONE REQ'D		3E-12.5x9.84x19'-0"						
	50915-Y23	38'-0" THRU 44'-0"	7E-10.25x7.06x22'-9" 7E-7.67x4.35x23'-9"	18"				SINGLE	30'-0"	3E-12.5x8.72x27'-0"
	50915-Y24				SINGLE	35'-0"	3E-12.5x8.02x32'-0"			
	50915-Y25				SINGLE	40'-0"	3E-12.5x7.32x37'-0"			
	50915-Y26				TWIN	30'-0"	3E-12.5x8.72x27'-0"			
	50915-Y27				TWIN	35'-0"	3E-12.5x8.02x32'-0"			
	50915-Y28				TWIN	40'-0"	3E-12.5x7.32x37'-0"			
	50915-Y29				NONE REQ'D		3E-13.25x10.59x19'-0"			
	50915-Y30				46'-0" THRU 50'-0"	7E-11.25x8.06x22'-9" 7E-8.71x4.65x29'-0"	21"	SINGLE	30'-0"	3E-13.25x9.47x27'-0"
	50915-Y31	SINGLE	35'-0"	3E-13.25x8.77x32'-0"						
	50915-Y32	SINGLE	40'-0"	3E-13.25x8.07x37'-0"						
	50915-Y33	TWIN	30'-0"	3E-13.25x9.47x27'-0"						
	50915-Y34	TWIN	35'-0"	3E-13.25x8.77x32'-0"						
	50915-Y35	TWIN	40'-0"	3E-13.25x8.07x37'-0"						
	50915-Y36	NONE REQ'D		0E-14.0x11.34x19'-0"						
	50915-Y37	52'-0" THRU 55'-0"	7E-12.75x8.30x31'-9" 7E-8.95x5.45x25'-0"	21"				SINGLE	30'-0"	0E-14.0x10.22x27'-0"
	50915-Y38				SINGLE	35'-0"	0E-14.0x9.52x32'-0"			
	50915-Y39				SINGLE	40'-0"	0E-14.0x8.82x37'-0"			
	50915-Y40				TWIN	30'-0"	0E-14.0x10.22x27'-0"			
	50915-Y41				TWIN	35'-0"	0E-14.0x9.52x32'-0"			
	50915-Y42				TWIN	40'-0"	0E-14.0x8.82x37'-0"			
	50915-Y108				60'-0"	3E-11.80x8.30x25'-0" 3E-9.09x3.95x36'-9"	21"	NONE REQ'D		0E-15.75x13.09x19'-0"
	50915-Y109							SINGLE	30'-0"	0E-15.75x11.97x27'-0"
	50915-Y110	SINGLE	35'-0"	0E-15.75x11.27x32'-0"						
	50915-Y111	SINGLE	40'-0"	0E-15.75x10.57x37'-0"						
	50915-Y112	TWIN	30'-0"	0E-15.75x11.97x27'-0"						
	50915-Y113	TWIN	35'-0"	0E-15.75x11.27x32'-0"						
	50915-Y114	TWIN	40'-0"	0E-15.75x10.57x37'-0"						
	50915-Y115	65'-0"	3E-12.50x8.30x30'-0" 3E-9.09x3.95x36'-9"	21"				NONE REQ'D		0E-15.75x13.09x19'-0"
	50915-Y116				SINGLE	30'-0"	0E-15.75x11.97x27'-0"			
	50915-Y117				SINGLE	35'-0"	0E-15.75x11.27x32'-0"			
	50915-Y118				SINGLE	40'-0"	0E-15.75x10.57x37'-0"			
	50915-Y119				TWIN	30'-0"	0E-15.75x11.97x27'-0"			
	50915-Y120				TWIN	35'-0"	0E-15.75x11.27x32'-0"			
	50915-Y121				TWIN	40'-0"	0E-15.75x10.57x37'-0"			



REVISIONS		DATE		BY		DESCRIPTION	
R9	REMOVED SPLICED ARM OPTION	5/11/12	FJP	SAD			
R8	ADDED GALV. VENTING TO TOP OF BACK-UP RING	5/3/12	DAB	SAD			
R7	UPDATED AASHTO SPECIFICATION, WAS 1985. NO CHANGES TO DESIGNS PER REQ. 22320-1	11/30/07	SAD	SD			

STEEL TRAFFIC & LIGHTING STRUCTURES CITY OF LENEXA, KANSAS CITY OF OVERLAND PARK, KANSAS			
LOF	---	ENG. REF. #	---
REQ. #	C90-127	S.O. #	---
		CAD #	1576A93
			R09
DRAWN T.L. BOWE		DRAWING NO. 50915-B1	
DATE 11/13/90		SHT 1 OF 3	
CHECKED GMP			




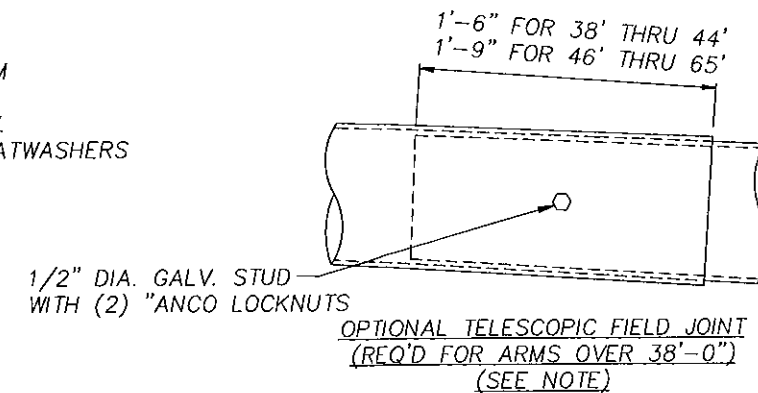
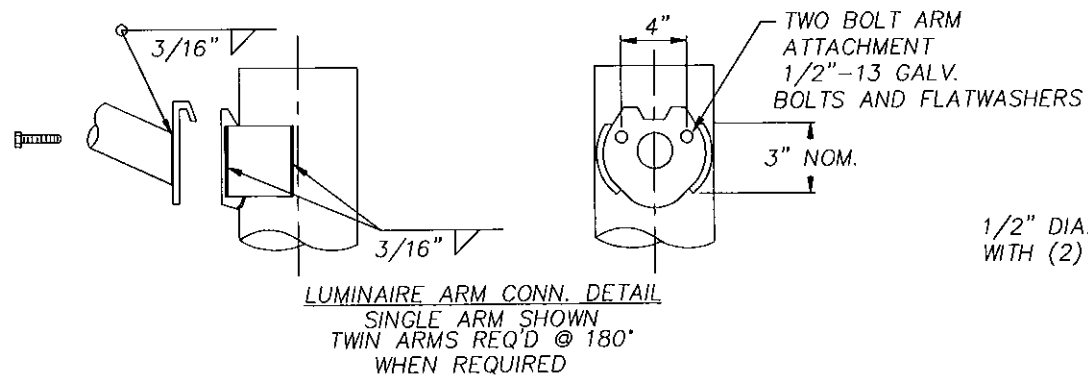
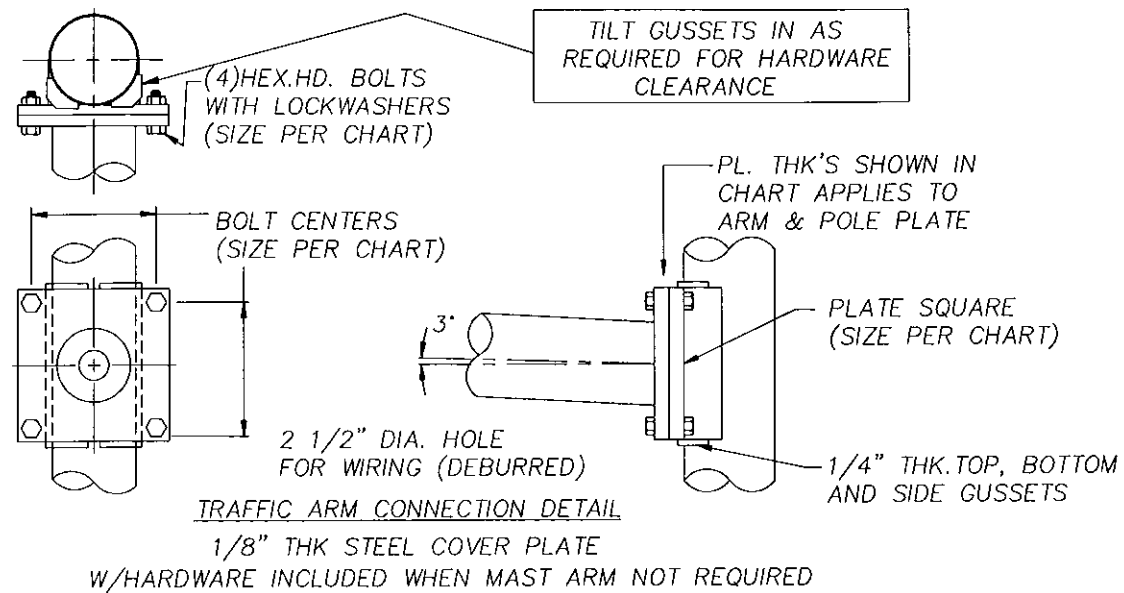
LOADING INFORMATION

DESIGN CRITERIA:  
1994 AASHTO STANDARD SPECIFICATIONS  
FOR STRUCTURAL SUPPORTS FOR HIGHWAY  
SIGNS, LUMINAIRES, AND TRAFFIC SIGNALS

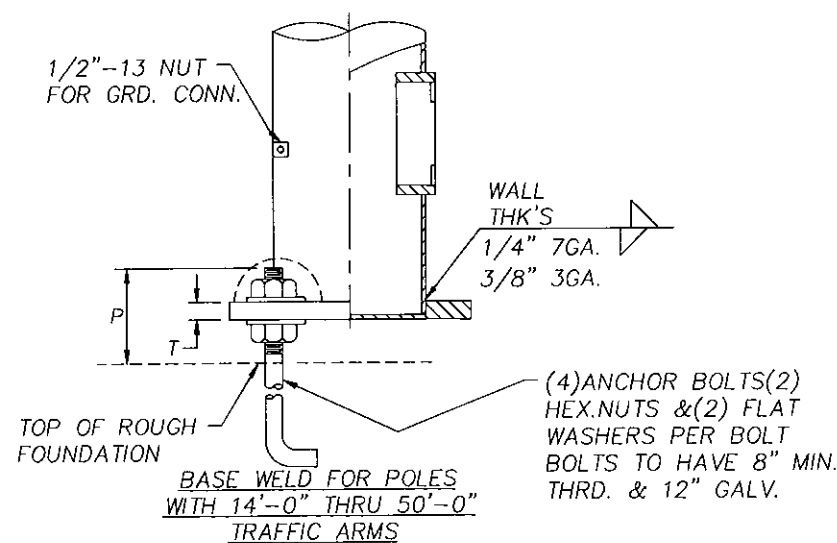
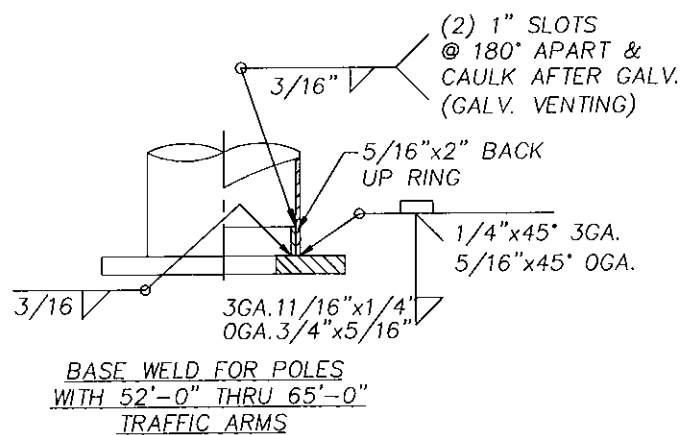
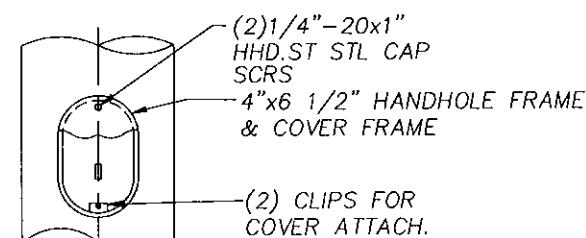
WIND VELOCITY:  
80 MPH ISOTACH.

DEVICE	DESCRIPTION	PROJ. AREA (FT. <sup>2</sup> )	WEIGHT (LBS)
(A)	12"-3 SEC. SIGNAL WITH BACKPLATES	8.67	30
(B)	18"x72" STREET NAME SIGN	9.00	20
(C)	12"-4 SEC. SIGNAL WITH NO BACKPLATES	5.44	40
(D)	DUAL-2 SEC. PEDESTRIAN SIGNAL	8.00	40
(E)	30"x30" POLE MOUNTED SIGN	6.25	13
(F)	12-4 SEC. SIGNAL WITH BACKPLATES	11.00	40
(G)	24"x30" SIGNAL ARM MOUNTED SIGN	5.00	10

REVISIONS		STEEL TRAFFIC & LIGHTING STRUCTURES	
		CITY OF LENEXA, KANSAS CITY OF OVERLAND PARK, KANSAS	
LOF _____		ENG. REF. # _____	
REQ. # C90-12Z		S.O. # _____	
		CAD # 1526A93	
			
DRAWN T.L.BOWE		DRAWING NO. R09	
DATE 11/13/90		50915-B1	
CHECKED GMP		SHT 2 OF 3	



U.M. DESIGN NUMBER	TRAFFIC ARM CONNECTION DATA			
	BOLT CENTERS	PLATE SQUARE	PLATE THK'S	BOLT SIZE
50915-Y1 THRU 50915-Y7	10 1/2"	12 3/4"	1 1/4"	3/4" DIA.
50915-Y8 THRU 50915-Y14	11 1/2"	14 1/4"	1 1/2"	1" DIA.
50915-Y15 THRU 50915-Y21	13 1/2"	16 1/4"	1 1/2"	1" DIA.
50915-Y22 THRU 50915-Y28	14"	16 3/4"	1 1/2"	1" DIA.
50915-Y29 THRU 50915-Y35	15"	17 3/4"	1 3/4"	1" DIA.
50915-Y36 THRU 50915-Y42	16"	18 3/4"	1 3/4"	1" DIA.
50915-Y108 THRU 50915-Y121	16"	19 1/4"	2"	1 1/4" DIA.



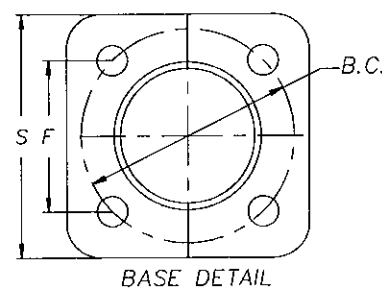
DESIGN CRITERIA:  
DESIGNED FOR 1994 AASHTO STANDARD SPECIFICATIONS FOR 80 M.P.H. WIND TO SUPPORT LOADS INDICATED

MATERIAL SPECIFICATION	
MONOTUBES	ASTM-A595 GR.A
PLATES	ASTM-A36
HANDHOLE FRAME	ASTM-A36
HANDHOLE COVER	C1010 STEEL
POLE TOP	ASTM-B26(356F OR 43)
MISC HARDWARE S.S.	AISI-300 SERIES (18-8)
PIPE	ASTM-A501
TRAFFIC ARM BOLTS	ASTM-A325
TRAFFIC ARM NUTS	ASTM-A194 GR.2H
ANCHOR BOLTS	ASTM-A36 M55
ANCHOR BOLT NUTS	ASTM-A563 GR.A
LUM. ARM CONN BOLTS	ASTM-A307
SIMPLEX PLATES	ASTM-A36
STRUCTURE FINISH	GALV TO ASTM-A123
HARDWARE FINISH	GALV TO ASTM-A153

HOW TO ORDER  
WHEN ORDERING SPECIFY DESIGN NO. FOR TYPE OF STRUCTURE REQ'D., TRAFFIC ARM LENGTH REQ'D. & LUMINAIRE ARM REQ'D.

EXAMPLE:  
DES. 50915-Y1 -18 FT. \_ \_ \_ \_ (INDICATES 18' TRAFFIC ARM, NO LUM. ARM.)  
DES-50915-Y2 -18 FT., 12 FT. \_ \_ \_ (INDICATES 18' TRAFFIC ARM WITH SINGLE 12' LUM. ARM AT 30' M.H.)  
DES-50915-Y5 -18 FT.-12 FT., 12 FT. (INDICATES 18' TRAFFIC ARM WITH TWIN 12' LUM. ARMS AT 30' M.H.)

BASE DATA						
POLE DIA.	B.C.	F	P	S	T	ANCHOR BOLT SIZE
7E-10.18	13 1/2"	9 9/16"	6 1/2"	14"	1 1/2"	1 1/2"x54"x6"
7E-11.25	15"	10 5/8"	6 1/2"	16 1/2"	1 1/2"	1 1/2"x54"x6"
7E-13.00	17"	12"	6 1/2"	18"	1 1/2"	1 1/2"x54"x6"
3E-12.50	17"	12"	7 1/2"	18"	1 3/4"	1 3/4"x84"x6"
3E-13.25	17 1/2"	12 3/8"	7 1/2"	18"	1 3/4"	1 3/4"x84"x6"
OE-14.00	19"	13 7/16"	7 1/2"	19"	1 3/4"	1 3/4"x84"x6"
OE-15.75	22 1/2"	15 15/16"	8 1/4"	23 1/2"	2"	2"x84"x6"



STEEL TRAFFIC & LIGHTING STRUCTURES		CITY OF LENEXA, KANSAS		CITY OF OVERLAND PARK, KANSAS	
LOF	---	ENG. REF.#	---		
REQ.#	C90-127	S.O.#	---	CAD# 1526A93	
DRAWN T.L.BOWE			DRAWING NO. 50915-B1		
DATE 11/13/90			SHT 3 OF 3		
CHECKED GMP					
REVISIONS					