

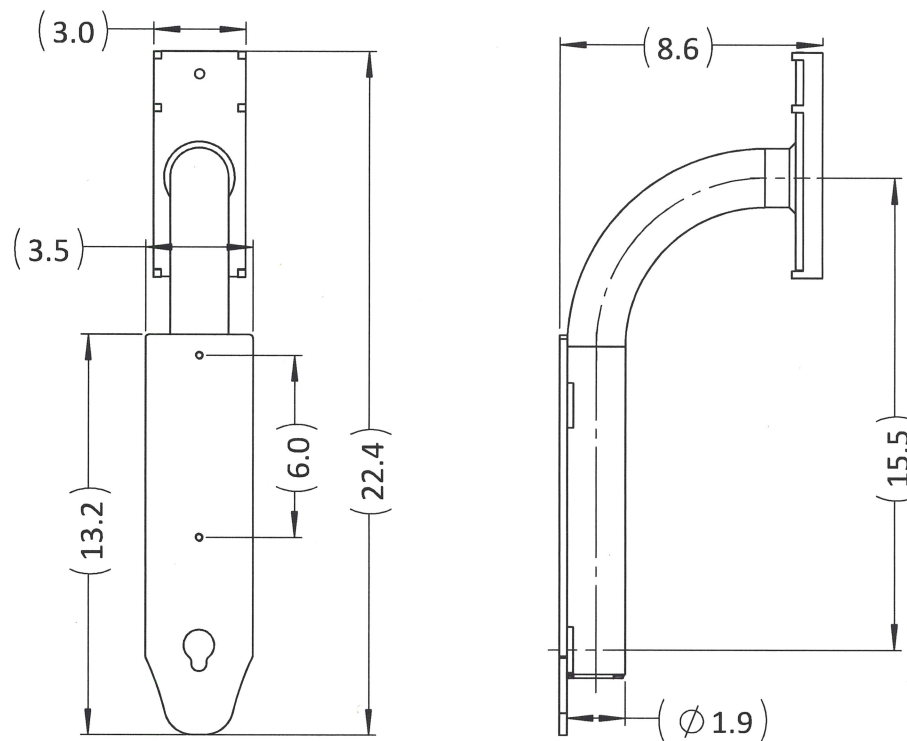
iN-EXTHTRED: Extender for Height Reduction

The MUTCD specifies a maximum push button height of 48" with no minimum specified. The recommended height is typically 42" above ground/standing grade, but it can be lower. With some decorative poles and poles with large decorative bases, mounting a push button within this height limit is not possible.

This extender is designed for these instances and allows an iNavigator PBS or PBF2 to extend out from the pole approximately 9" and reduce/adjust the button height by up to 15".

This extender can be fastened to the pole by either banding (up to 1" wide) or bolted using the two ¼-20 mounting bolts supplied with each extender.

This mount is constructed from welded steel, with a hot dipped galvanize coating.



Dimensions are in inches.

