

PSI

336 Model Controller Cabinet



Description

The Model 336 Controller Cabinet is an assembly interchangeable cabinet, designed to house the Trafficware 2070 Controller unit, and associated peripherals. It is capable of controlling an eight phase, four-pedestrian intersection.

The 336 was designed with total interchangeability as the paramount design feature. Each cabinet is wired alike, making the major and minor assemblies and peripherals totally interchangeable between manufacturers.

- Eight Phase Four-Ped Operation
- Total sub-assembly Interchangeability
- Ferro-Resonant Power Supply

PSI

A Trafficware Company

(281)240-7233

www.PSI-mfg.com

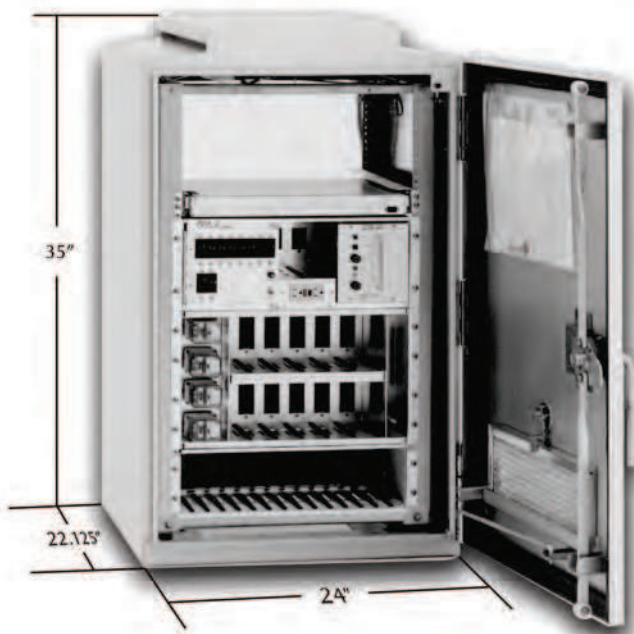
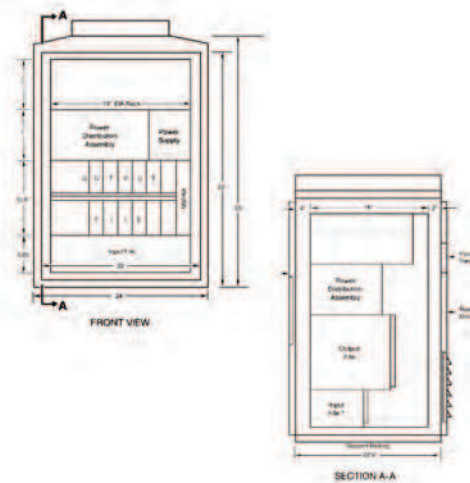
PSI 336 Controller Cabinet

The Power Supply Assembly is a ferro-resonant design which provides 24 VDC to the other assemblies within the Model 336 cabinet.

The Input File provides for the processing and isolation of field signals entering the controller. The input file will accept up to 14 plug-in two- or four-channel Vehicle Detectors and/or Isolation Modules which provide the controller with vehicle, pedestrian and other status information.

The Power Distribution Assembly distributes AC power throughout the cabinet system, provides ground fault isolation outlets and provides flash power and signal power to the Output File.

The Output File provides centralized connections for the Safety Monitor, Switch Packs, Flash Transfer Relays, and Flash Programming Plugs.



Note:

“M” Base Adapter available.

Software:

In keeping with a company commitment of superiority in the Model 2070 field, PSI has software available to meet your every need – software ranging from local intersection control to Central Master Systems.

Application:

The Model 336 Stretch Cabinet can be utilized in applications ranging from a two-phase to eight-phase intersection controller.

PSI
A Trafficware Company

(281) 240-7233

www.PSI-mfg.com

PSI reserves the right to alter any of the Company's products or published technical data relating thereto at any time without notice