

NOTES:

- ANCHOR BOLT PER ASTM F1554 GRADE 55 S1 &/OR AASHTO M314-90 GRADE 55. YIELD STRENGTH = 55,000 PSI MIN YIELD TENSILE STRENGTH = 75,000-95,000 PSI
- HOT DIP GALVANIZE PER ASTM A153.
- THREAD TO BE CLASS 2A PER AMERICAN STD. B 1.1 .030 OVER SIZE AFTER GALVANIZING
- ALL BOLTS ROLLED THREAD
- GALVANIZED HEAVY HEX NUTS (A563GV) PER ASTM A563 GR DH (.030 OVER SIZE) OR (A194 2H EQUIVALENT)
- NO WELDING IS ALLOWED ON ANCHOR BOLTS
- GALVANIZED FLAT WASHERS PER ASTM F436.
- GALVANIZED LOCKWASHERS
- THE END OF ANCHOR BOLT TO PROJECT FROM THE CONCRETE PAINTED PER COLOR CODE

PART NO BOLT (ONLY)	PART NO BOLT W/3 NUTS, 2 LOCK & 2 FLAT WASHERS	PART NO BOLT W/3 NUTS & 2 FLAT WASHERS	PART NO BOLT W/2 NUTS, 1 LOCK & 2 FLAT WASHERS	PART NO BOLT W/2 NUTS, 2 LOCK & 2 FLAT WASHERS	PART NO BOLT W/2 NUTS & 2 FLAT WASHERS	PART NO BOLT W/2 NUTS	PART NO BOLT W/1 NUT	"A"	CL	"B" THD SIZE	"C" EFF MIN THD LG	"G" MIN LG OF GALV	"L"	"D"	"R"	COLOR CODE	QTY BOLTS	QTY NUTS	QTY LOCK WASHERS	QTY FLAT WASHERS
460A579-1	460A579-1TNW	460A579-1TNFW	460A579-1DNW	460A579-1DNLW	460A579-1DNFW	460A579-1DN	460A579-1N	.91	40"	1-8	6"	12"	36"	4"	2 1/2	YELLOW				
460A579-2	460A579-2TNW	460A579-2TNFW	460A579-2DNW	460A579-2DNLW	460A579-2DNFW	460A579-2DN	460A579-2N	1.148	48"	1 1/4-7	8"	12"	42"	6"	2 1/2	YELLOW				
460A579-3	460A579-3TNW	460A579-3TNFW	460A579-3DNW	460A579-3DNLW	460A579-3DNFW	460A579-3DN	460A579-3N	1.381	60"	1 1/2-6	10"	12"	54"	6"	3 3/8	YELLOW				
460A579-4	460A579-4TNW	460A579-4TNFW	460A579-4DNW	460A579-4DNLW	460A579-4DNFW	460A579-4DN	460A579-4N	1.613	90"	1 3/4-5	10"	14"	84"	6"	3 1/2	YELLOW				
460A579-5	460A579-5TNW	460A579-5TNFW	460A579-5DNW	460A579-5DNLW	460A579-5DNFW	460A579-5DN	460A579-5N	1.845	90"	2-4 1/2	10"	14"	84"	6"	4"	YELLOW				
460A579-6	460A579-6TNW	460A579-6TNFW	460A579-6DNW	460A579-6DNLW	460A579-6DNFW	460A579-6DN	460A579-6N	2.148	96"	2 1/4-4 1/2	12"	14"	89"	7"	4 1/2	YELLOW				
460A579-7	460A579-7TNW	460A579-7TNFW	460A579-7DNW	460A579-7DNLW	460A579-7DNFW	460A579-7DN	460A579-7N	1.845	96"	2-4 1/2	10"	14"	90"	6"	4"	YELLOW				
460A579-8	460A579-8TNW	460A579-8TNFW	460A579-8DNW	460A579-8DNLW	460A579-8DNFW	460A579-8DN	460A579-8N	1.148	40"	1 1/4-7	6"	12"	36"	4"	2 1/2	YELLOW				
460A579-9	460A579-9TNW	460A579-9TNFW	460A579-9DNW	460A579-9DNLW	460A579-9DNFW	460A579-9DN	460A579-9N	1.148	51"	1 1/4-7	6"	12"	45"	6"	2 1/2	YELLOW				
460A579-10	460A579-10TNW	460A579-10TNFW	460A579-10DNW	460A579-10DNLW	460A579-10DNFW	460A579-10DN	460A579-10N	1.381	54"	1 1/2-6	10"	12"	60"	6"	3 3/8	YELLOW				
460A579-11	460A579-11TNW	460A579-11TNFW	460A579-11DNW	460A579-11DNLW	460A579-11DNFW	460A579-11DN	460A579-11N	1.148	48"	1 1/4-7	10"	14"	42"	6"	2 1/2	YELLOW				
460A579-12	460A579-12TNW	460A579-12TNFW	460A579-12DNW	460A579-12DNLW	460A579-12DNFW	460A579-12DN	460A579-12N	1.381	60"	1 1/2-6	10"	14"	54"	6"	3 3/8	YELLOW				
460A579-13	460A579-13TNW	460A579-13TNFW	460A579-13DNW	460A579-13DNLW	460A579-13DNFW	460A579-13DN	460A579-13N	.91	42"	1-8	6"	12"	38"	4"	2 1/2	YELLOW				
460A579-14	460A579-14TNW	460A579-14TNFW	460A579-14DNW	460A579-14DNLW	460A579-14DNFW	460A579-14DN	460A579-14N	1.845	66"	2-4 1/2	10"	14"	60"	6"	4"	YELLOW				

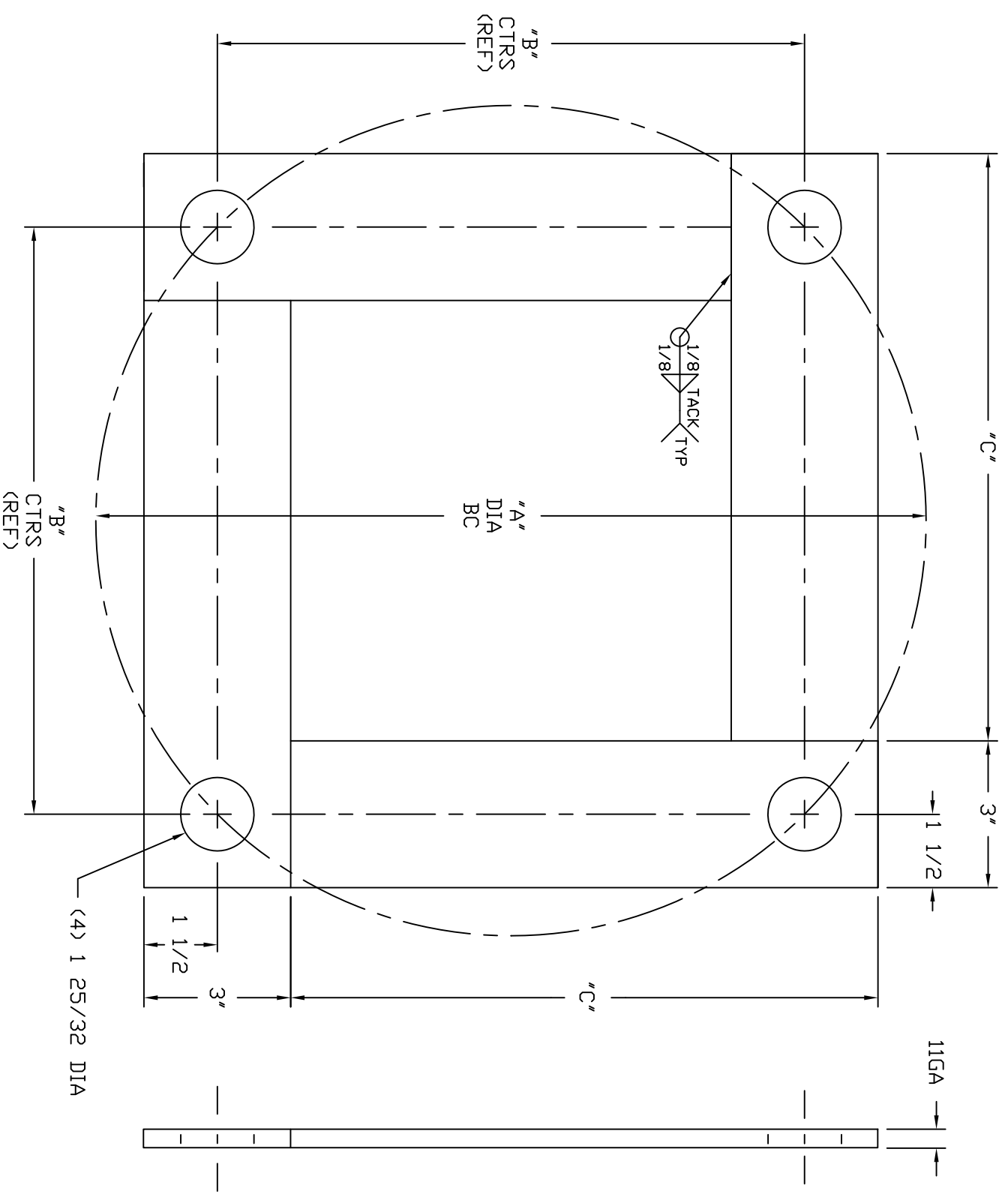
DWN: JAMIE D.
 DATE: 08-16-11
 CHK: FLOYD F.
 SCALE: NTS

ANCHOR BOLTS
 F1554 GRADE 55

Millerbernd MANUFACTURING CO. WINSTED, MN **460A579**

REV 6-30-15 ADDED 460A579-13
 REV 9-6-13 -9 CL WAS 40"
 REV 11-28-11 CHANGE "C" DN -1 FROM 8" TO 6",
 "C" DN -3,-4 & -5 FROM 12" TO 10" AND "L" DN
 -6 FROM 90" TO 89" AND "D" FROM 6" TO 7"

19	22 1/2"	15 15/16"	15 29/32"
18	25"	17 11/16"	17 21/32"
17	22"	15 9/16"	15 9/16"
16	25 1/2"	18"	18"
15	17"	12"	11 31/32"
14	17 1/2"	12 3/8"	12 11/32"
13	16"	11 5/16"	11 9/32"
12	23"	16 1/4"	16 7/32"
11	27 1/2"	19 7/16"	19 13/32"
10	21 1/2"	15 3/16"	15 5/32"
9	19 1/2"	13 25/32"	13 3/4"
8	18 1/2"	13 1/16"	13 1/32"
7	19"	13 7/16"	13 13/32"
6	21"	14 7/8"	14 27/32"
5	20"	14 1/8"	14 3/32"
4	15"	10 5/8"	10 19/32"
3	24"	17"	16 31/32"
2	18"	12 3/4"	12 23/32"
1	15 29/32"	11 1/4"	11 3/16"
DASH NO	"A" DIA BC	"B" CTRS	"C"



- NOTE:
1. MATERIAL - LOW CARBON 36,000 PSI
MIN YIELD (ASTM A36)
 2. FINISH - BARE UNFINISHED

DWN: CHAD G.	TEMPLATE (4) 1 3/4 BOLTS
DATE: 3-25-02	
CHK:	Millerbernd MANUFACTURING CO. WINSTED, MN
SCALE: NTS	
460B208	