



## VantageRadius®

Radar technology and streaming video for stop bar detection



Forward-fire radar  
for accurate vehicle detection



High resolution video streaming for  
intersection monitoring



Setup tool and tilt sensor for  
easy setup

### Radar presence detection

VantageRadius® utilizes the latest 4D radar technology for the highest performing radar stop bar detection system. This is achieved using speed, distance, height and angle measurements to detect vehicles approaching the intersection.

VantageRadius builds on the success of the Vantage Vector hybrid detector offering a combination of radar and video designed specifically for stop bar detection at the intersection.

Using radar and Iteris' enhanced detection algorithms ensures that VantageRadius can accurately detect vehicles and speeds as they approach the intersection, enabling the intersection

to operate at its peak efficiency. The system is built on the simple-to-use Vantage Next® platform and continues the Iteris tradition of ease of installation and simple configuration.

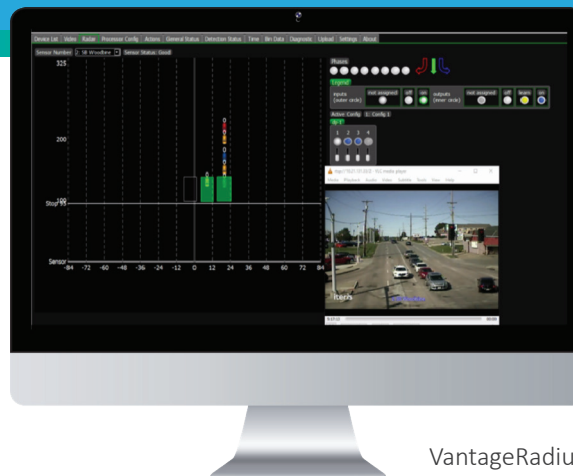
### Monitor your intersection with live video stream

Included with the VantageRadius sensor is a high resolution digital camera that streams live video back to a central management location, providing agencies with the ability to monitor and take action on the operation of their intersection. This video stream can also be used in place of other surveillance cameras to stream live video to your traffic management center video wall and mobile applications from Iteris.

**iteris®**

## Benefits

- Low life cycle cost
- Easy to install, configure, and maintain
- Remote intersection viewing
- Integrated video validates detection performance
- Low power operation
- Multiple cabinet configurations available



VantageRadius Setup Tool

## Specifications

### SENSOR HEAD

Weight	3lbs (1.4kgs)
Sensor Dimensions	6.5"W x 5.5"T x 8.5"D (165mm x 140mm x 216mm)
Environmental	IP67 rated enclosure

### RADAR SENSOR

Frequency	24 GHz (K-band)
Tracked Objects	64
Distance	325 feet (90 m)
Accuracy	Speed 0-150 mph +/- 1 mph Speed 0-240 kph +/- 1.5 kph
Power Consumption	48VDC, 5W max.
Connections	Terminal Block, RJ-45 Bulkhead

### PROCESSOR

Power	12 or 24 VDC, 5W typical
Video Output	Compressed Digital Stream
Detector I/O	4 open-collector outputs and 4 inputs per Processor card 12 or 24 VDC, 5W typical 64 total outputs /64 total inputs using Extension modules
Status Indicators	Primary power Video input status Detection outputs
Communications	Ethernet

### CAMERA

Sensor	1/3" CMOS, 1.3MP, WDR
Lens	Fixed Zoom lens, 70° viewing angle
Minimum Illumination	0.1 Lux

### 19" RACK MOUNT CCU

Power	110/220 60/50 Hz 20 W Max
Dimensions	19"L x 8.75"D x 1.75"H (483mm L x 222mm D x 45mm H)
Weight	3.9 lb (1.77kg)
Configurations	Up to 4 sensors, processors required

### NEMA SHELF MOUNT CCU

Power	48VDC @ 120W
External Power Supply	DIN Rail 110-240VAC
Dimensions	4" L x 10.5" D x 10.5" H (102mm L x 267mm D x 267mm H)
Weight	6lbs (2.72kgs)
Configurations	Up to 4 sensors, processors required TS2; 2 sensor or 4 sensors, no processors required
General	
Op. Temperature	-35°F to +165°F (34°C to +74°C)
Humidity	0% to 95% non-condensing
Vibration	0.5G, 3 axes, 5-30Hz
Shock	10G in all 3 axes
Regulatory	NEMA TS-2 compliant FCC part 15, Class A 3 years limited warranty



Copyright © 2020 Iteris, Inc. All rights reserved.

NOTICE: Iteris, Inc. reserves the right to change product specifications without notice. Information furnished is for informational purposes only. This information may not be complete or the latest revision. For the most up-to-date information, please contact Iteris, Inc.