

Advanced VIVDS Solutions from ITS Plus

- Single or Dual Channel VIVDS Cards

- Dual channel card includes complimentary Ethernet
 - Monitor and adjust zones from a TMC
- "Circle Zone" Technology
 - Enables 1,000 ft Advanced Detection
 - Optimizes
 - Vehicle/Bicycle Speed and Counting
 - Ramp Meter Applications
- 30 detection zones, 4 Outputs
 - Expansion card to 8 Outputs
 - Or; SDLC to 8 outputs
- TS1, TS2 or 170/2070 compatible



Single and Dual Channel
ITSP-V100 and ITSP-V200E

ITS Plus VIVDS System

Innovative design addresses the issues of price, performance, reliability and maintenance commonly associated with traditional VIVDS systems. By combining advanced cameras with Power Line Modem technology and VIVDS software ITS Plus has created a fully interoperable, cost effective and valued added product family.

Two distinct methods of detection; because no single technology can do everything well.

Line Zones are designed for stop bar detection. A simple mouse/monitor set up allows for an intuitive 3 step programming of the approach.

Circle Zones are virtual loops optimized for Advanced Detection, Ramp Meter applications and Vehicle/Bicycle Counting. The unique technology enables advanced detection to 1,000 ft. coupled with very accurate counting.

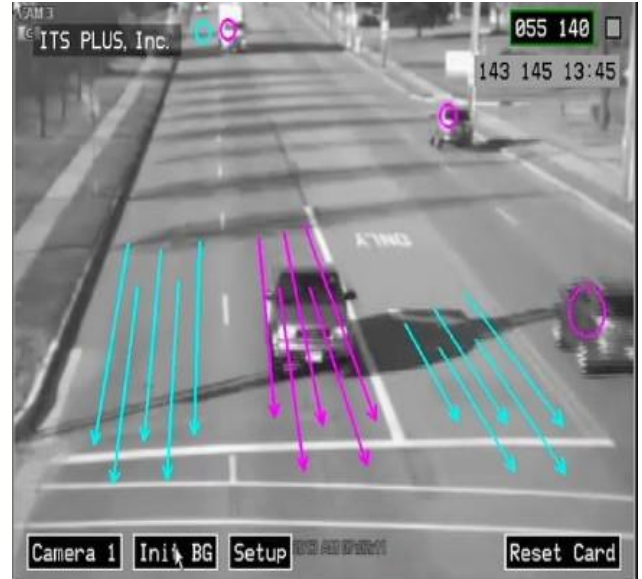
Coax or Power Line Modem Option (PLM)

Power Line Modem requires only a single spare unshielded wire and neutral wire to transmit video from the camera back to the cabinet. No additional wires are required. Located in the cabinet, the PLM receiver outputs analog NTSC video directly into the VIVDS card.

Specifications

ITSP-V100

- Single Channel VIVDS Card
- Input Voltage: 12 – 24 VDC
- Power Consumption: 1.5 W
- Programming Via:
 - USB mouse/analog video monitor, or
 - Laptop PC
- Video Outputs: NTSC or MJPEG
- Card Outputs: 4 relay outputs
- 30 detection zones with flexible logic for mapping to relay outputs
- NTSC input via BNC
- Exceeds TS2 Electrical/Environmental cabinet specs
- ISO9001:2000 Certified manufacturing line



ITSP-V200E

- Dual Channel VIVDS Card with Ethernet Output
- Input Voltage: 12 – 24 VDC
- Power Consumption: 2.5W
- Programming Via:
 - USB mouse/analog video monitor, or
 - Laptop PC, or
 - PC at TMC (if connected by Ethernet)
- Video Outputs: NTSC, MJPEG or Ethernet
- Card Outputs: 4 relay outputs
- 30 detection zones with flexible logic for mapping to relay outputs
- Exceeds TS2 Electrical/Environmental cabinet specs
- ISO9001:2000 Certified manufacturing line

ITSP-PM120P (Power Line Modem Option)

- Input Voltage: 120VAC
- Power Consumption
 - Single Transmitter: 8.8W
 - Four Channel Receiver: 14W
- Output: NTSC Broadband Video via BNC connector
- Distance: Rated to 300 ft; field tested to over 1000 ft.
- Dynamically adjusts to each intersection's unique impedance and noise environment
 - Operational Frequency: 2MHz – 20MHz
- Meets TS-2 Electrical/Environmental cabinet specs
- ISO9001:2000 Certified manufacturing line