



DIM242

Dual DC Isolator

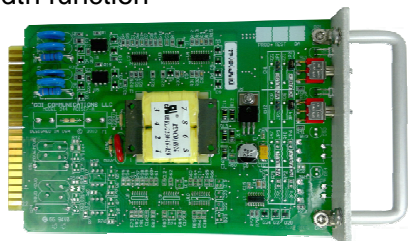


The GDI Model 242 Dual DC Isolator consists of two, independent, DC Isolators on one plug-in module. Each isolator converts a switch closure to a signal that a traffic controller can utilize.

Both isolators provide isolation, voltage hysteresis, and input signal timing and amplitude qualification.

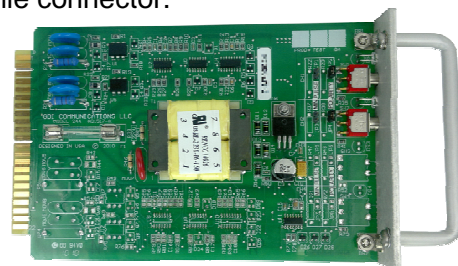
The GDI DIM242 plugs into a standard input file and is compatible with the latest technology that utilizes both rows of the 44 pin edge connector

Jumpers are available to select the output polarity of each isolator and to disable the minimum output pulse width function

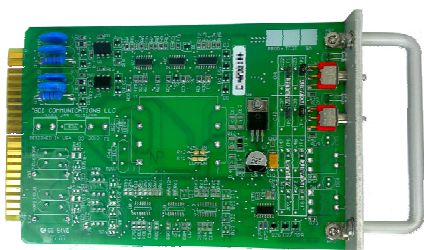


The standard DIM242 is powered from the 115VAC available on the 44-pin Input file connector.

Optionally, the DIM242 can be configured with a fuse on the AC+ line input.



The **DIM242L** is configured to be powered from the +24vdc available on the 44-pin connector of the Input File.



FEATURES

- * Meets the transient and lightning test requirements in the CALTRANS TEES.
- * Less than 1W per channel.
- * The output polarity is jumper selectable
- * 100ms minimum output pulse can be disabled with a jumper
- * Front panel mounted test switch for each channel
- * Front panel LED indicator for a true signal

Input Voltage

- * Output is OFF for input voltages greater than 12 volts
- * Output is ON for voltages of less than 8volts that have a duration of at least 10 to 25 ms.
- * Minimum output pulse width is 100 ms with a valid input (can be disabled).

Output

- * Optically isolated open collector NPN transistor
- * Capable of sinking 50 ma when on.
- * Can register a new input within 25 ms of the old signal going away.
- * Output clamped on power up and down