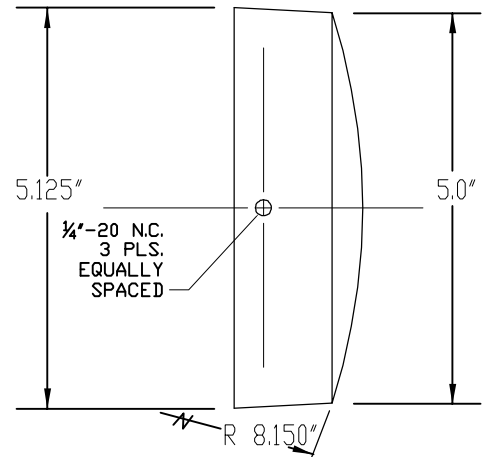
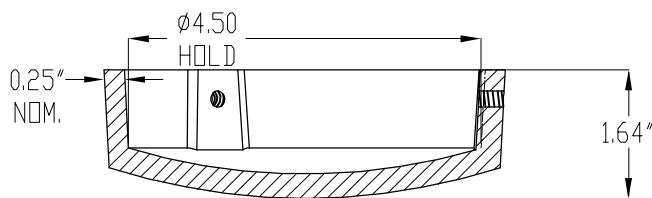


ASSEMBLY NO. TCSS



PART NO. 11TC



SECTION AA

TCSS TOP CAP ASSEMBLY INCLUDED PARTS:

- (1) 11TC CLEAR ANODIZED* CAST ALUMINUM TOP CAP
- (3) 1/4"-20 x 3/8" STAINLESS STEEL SOCKET SET SCREWS

* OTHER FINISHES AND COLORS AVAILABLE.

NOTE: APPLY ANTI-SEIZE LUBRICANT TO ALL THREADED SURFACES.

INSTALLATION:

FITS 4" SCHEDULE 40 OR 80 PIPE.

1. OPTIONAL: HEAT CASTING 20 DEGREES ABOVE PIPE TEMPERATURE (IN YOUR JACKET, ON CAR HOOD OF A VEHICLE, HEATER OR HEAT SOURCE ETC.) THIS WILL ALLOW FOR A HEAT SEAL TO OCCUR ON THE PIPE.
2. START SET SCREWS IN CASTING. APPLY ANTI-SEIZE LUBRICANT TO ALL THREADED SURFACES.
3. TAP TOP CAP DOWN SQUARE ON PIPE.
4. TIGHTEN SET SCREWS.

REMOVAL:

1. LOOSEN SET SCREWS.
2. TAP SIDES OF CAP UPWARD, OR
3. TAP TOP CAP FROM BELOW WITH A WOODEN STICK, ROD, OR OBJECT AT LEAST 1' LONGER THAN THE PIPE.

FREY

MANUFACTURING CORPORATION

13150 STEWART AVE., NORWOOD, MN 55368

VOICE: 952-467-4402, Toll Free Fax: 1-866-941-FREY (3739)

Web: FreyMfgCorp.com Email: FreyMfg@FreyMfgCorp.com

Patent 9493918

TCSS
TOP CAP WITH SET SCREWS
FOR 4" PIPE

DATE

06-08-09
11-15-16

DWG. NO.

8.4.1

REV.

1