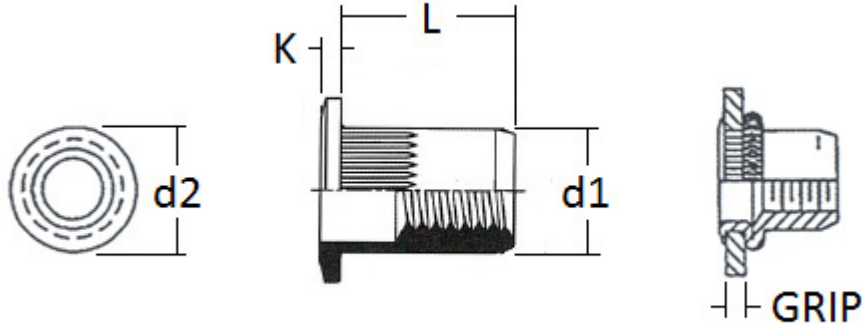


Rivet Nuts, Ribbed Flange Head, Yellow Zinc Plated

The information below lists the required dimensional, chemical and physical characteristics of the products in this purchase order. If the order received does not meet these requirements, it may result in a supplier corrective action request, which could jeopardize your status as an approved vendor. Unless otherwise specified, all referenced consensus standards must be adhered to in their entirety.



Size	L	d2	Head Diameter Tolerance	K	d1	Grip Range		Mating Hole Size Requirement	Tensile Strength (lbs)	Torque (in-lbs)
	Body Length	Head Diameter		Head Height	Body Diameter	Min.	Max.	+0.006"/-0.0"	Min.	Min.
	+/-0.015"	Nom.		+/-0.003"	+0.0"/-0.005"					
#6-32	.420	.390	+/-0.01"	.030	.265	.020	.080	17/64	1326.4	22.1
#6-32	.470	.390		.030	.265	.080	.130	17/64	1326.4	22.1
#8-32	.420	.390		.030	.265	.020	.080	17/64	1528.7	22.1
#8-32	.470	.390		.030	.265	.080	.130	17/64	1528.7	22.1
#10-24	.475	.415		.030	.296	.020	.130	19/64	2203.1	44.3
#10-24	.585	.415		.030	.296	.130	.225	19/64	2203.1	44.3
#10-32	.475	.415		.030	.296	.020	.130	19/64	2203.1	44.3
#10-32	.585	.415		.030	.296	.130	.225	19/64	2203.1	44.3
1/4-20	.580	.500		.030	.390	.027	.165	25/64	4271.4	76.1
1/4-20	.680	.500		.030	.390	.165	.260	25/64	4271.4	76.1
1/4-28	.580	.500	.030	.390	.027	.165	25/64	4271.4	76.1	
1/4-28	.680	.500	.030	.390	.165	.260	25/64	4271.4	76.1	
5/16-18	.690	.685	+/-0.025"	.035	.530	.027	.150	17/32	6969.1	185.9
5/16-18	.805	.685		.035	.530	.150	.312	17/32	6969.1	185.9
5/16-24	.690	.685		.035	.530	.027	.150	17/32	6969.1	185.9
5/16-24	.805	.685		.035	.530	.150	.312	17/32	6969.1	185.9
3/8-16	.690	.685		.035	.530	.027	.150	17/32	8475.3	371.7
3/8-16	.805	.685		.035	.530	.150	.312	17/32	8475.3	371.7
3/8-24	.690	.685		.035	.530	.027	.150	17/32	8475.3	371.7
3/8-24	.805	.685		.035	.530	.150	.312	17/32	8475.3	371.7

Specification Requirements:

- Dimensions: See Table Above
- Material: Carbon Steel
- Threads: ASME B1.1, Class 2B
- Finish: Fe/Zn 3CN per ASTM F1941/F1941M