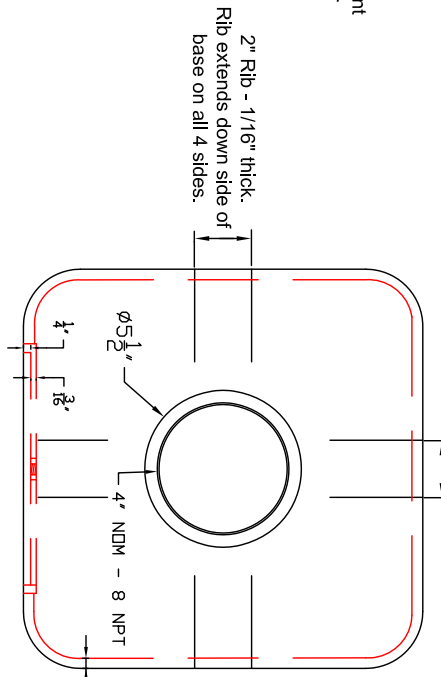
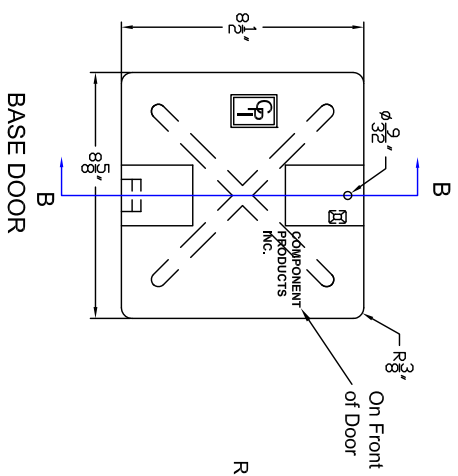
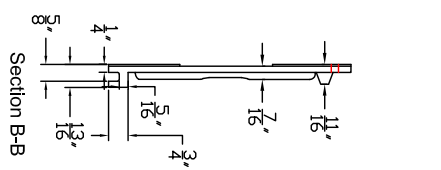
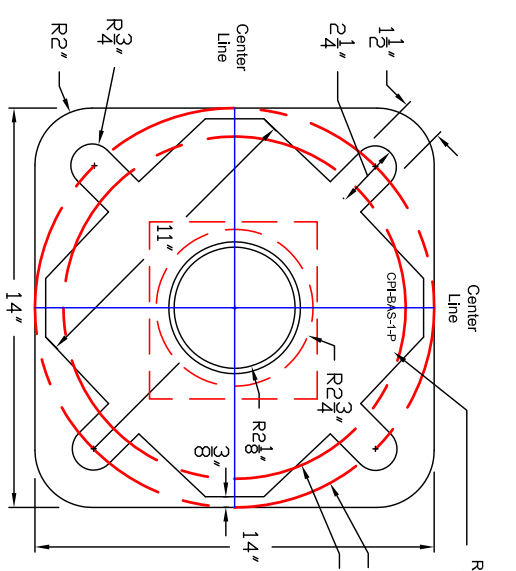
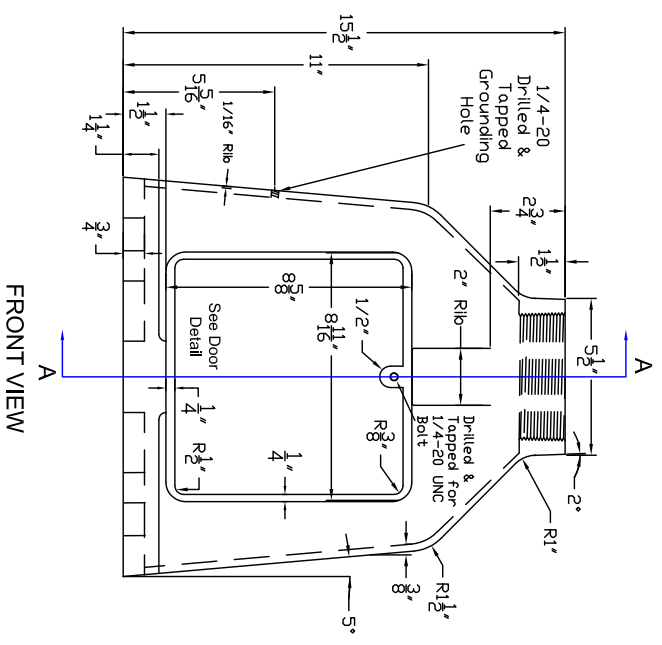
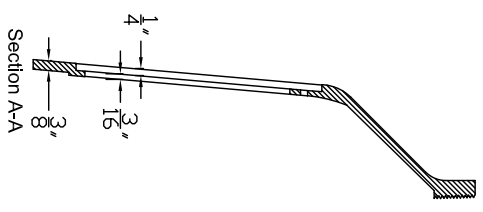


REVISIONS				
ZONE	REV	DESCRIPTION	DATE	APPROVED
	A	UPDATED DRAWING	10-FEB-09	RRM



"CPI-BAS-1-P" WILL BE RAISED LETTERING ON THE INSIDE OF THE CASTING SO IT CAN BE READILY SEEN.



Component Products, Inc.
 521 Morse Avenue
 Schaumburg, IL 60193
 Tel (847) 301-1000
 Fax (847) 301-0100

CPI-BAS-1P
 Square Aluminum Pedestal Base

SIZE	Drawn By:	DWG NO.	REV
B	RRM	CPI-BAS-1P 10 FEB 09	A
SCALE	NTS		

Permanent Mold Casting