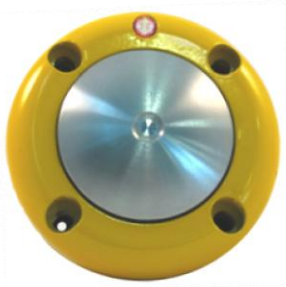




4 EVR Pedestrian Push Button



FEATURES

- Solid state piezo switch
- Pressure sensitive
- Actuator will not stick
- Virtually vandal proof
- LED and audible tone
- ADA and MUTCD compliant
- 5 year warranty



Verisys
Registrars®
ISO 9001:2008
Certified

 Made in the USA

Overview

4 EVR is digitally controlled and virtually vandal proof. The 4 EVR utilizes a piezo switch element that cannot be stuck in a constant call. An LED and audible tone provide the pedestrian with feedback that a call has been placed.

Feedback options include:

- Latching LED and audible dee dah tone
- Momentary LED and audible dee dah tone
- Momentary audible dee dah tone

The actuator is pressure sensitive and uses no screws or bolts in the functioning areas.

Latch Mode Configurations

The 4 EVR can be configured with latching/momentary or no LED. In the latching mode the pilot light is lit when the call is placed and remains on until the walk display is energized. All pushbuttons on the phase are synchronized. Latching mode requires an ENIM or PBIC.

Enlightened Interface Module (ENIM)

The ENIM mounts in the control cabinet. Field connections from the PPB interface with the load switches and field terminals at the interface module. One ENIM manages up to four phases and 16 push buttons.

Push Button Isolator Card (PBIC)

The PBIC fits into a 170 card file and fills two card slots replacing the existing isolator cards in the rack. One card manages up to four phases and 16 push buttons



Feedback	
Visual	Red LED
Audible	Dee 2300 Hz – Dah 2000 Hz
Latching Mode	LED with ENIM/PBIC
Tactile	Optional tactile arrow

Electrical Specifications	
Operating Voltage	TS1 & TS2 (12 – 24 V AC/DC)
Line Voltage	30 V DC - 25 V AC (rms)
Switch Current Max	200 mA
On Resistance	< 20 ohms
Operating Mode	Normally Open
Closure Dwell	120 ms
Maximum Terminal Voltage During Closure	1.5 V
Switch	Piezo electric, solid state switch

Environmental Specifications	
Operating Temperature	-40 C to 80 C
Operating Life	300 x 10 ⁶

ADA Specifications	
Operating Force	< 3 lbf
Actuator size	2 inches

Materials	
Bezel	Aluminum
Actuator	Stainless Steel
Hardware	Stainless Steel
Finish	Powder Coat

Form Factor	
Round	3" OD – 4 hole, 2 hole (9-3, 10-2)
Rectangular	2.8" x 3.4" – 4 hole, 2 hole
Oval	6.8" x 3.4" – 2 hole
Color	Black, Green, Yellow, Natural

Warranty	5 Years
-----------------	---------

ABOUT

Campbell Company is the leading American manufacturer of pedestrian signal safety products, accessible pedestrian signals (APS) pedestrian push buttons, signs, and hardware.

ADDITIONAL INFORMATION

More information can be found at: www.pedsafety.com