



VER-MAC

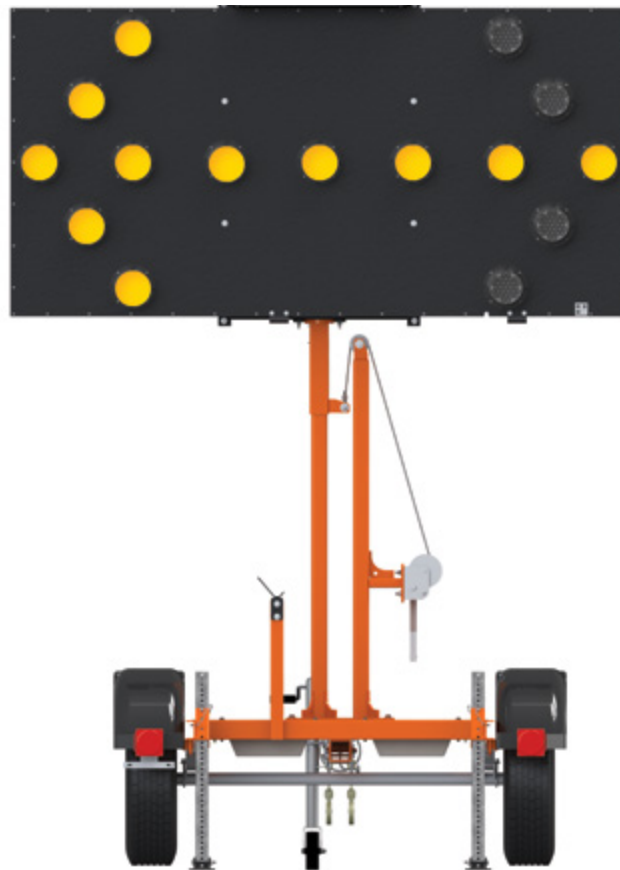


SERIES

ST-4815

TRAILER-MOUNTED ARROWBOARD

Ver-Mac's ST-4815 Pro Series is a trailer-mounted arrowboard with 15 LED lamps. It features our innovative Single-Mast Design, V-Switch controller, Stealth Technology, OptiBright technology and is wired to integrate the Smart Arrowboard option. The unit combines energy-efficient design and high-quality construction to provide the most reliable, cost-effective and safe to operate arrowboard on the market.



PRO SERIES FEATURES

STEALTH TECHNOLOGY

Maintenance-Free Battery
Anti-Theft Hidden Battery Compartment

OPTIBRIGHT TECHNOLOGY

Exclusive Energy-Efficient Lens Mold
Easier Replacement of Lamps
Autonomous No Hassle Performance.

IMPROVED SINGLE MAST DESIGN

Diamond Plate Maintenance Platform
Rugged Indexed Rod Mast Brake
Tongue Wheel Jack for easy and safe set up
Secure Support of Arrowboard for Transport
Safely Set and Turn Arrowboard to Traffic

V-SWITCH CONTROLLER

Easy-to-use rotary switch to quickly select arrow patterns/mode
Real-time arrow, solar & battery status
Lockable control box for more security
Photocell with automatic adjustment

SMART ARROWBOARD OPTION

Plug & Play Set up
Lane Closure Start Location
Mode Displayed on Arrow Sign
Road Name & Mile Marker Where Deployed
Direction of Traffic
Side of Road Where Deployed
Ability to retrofit existing arrowboards



V-Switch Controller



ST-4815



SINGLE-MAST DESIGN

ARROWBOARD PROTECTED IN TRAVEL POSITION

Safer to use and more efficient to store and transport

LOW CENTER OF GRAVITY REDUCES WIND DRAG

Saving fuel costs

QUICK AND EASY TO SET UP IN TIGHT WORK ZONES

Saving time

ANGLE THE ARROWBOARD INDEPENDENTLY TOWARDS TRAFFIC

Safely set and turn arrowboard to traffic

EASY MAINTENANCE PLATFORM

Diamond plates make it easy and safe to perform maintenance

HIGH-QUALITY CONSTRUCTION

POWDER COATING SUPERIOR FINISH

Impact, humidity, salt spray and rust resistant

4 ADJUSTABLE STABILIZER LEGS

For trailer stabilization and easy transportation

TONGUE WHEEL JACK

For easy and safe trailer set up

REMOVABLE TONGUE

Saves space for storage

MANUAL LIFT MECHANISM

For quick deployment

U-SHAPED CRADLE FOR ARROWBOARD

For better support during transportation

RUGGED INDEXED ROD MAST BRAKE

The arrow can be positioned on 204 degrees (17 deg. increments)

HEAVY-DUTY PLASTIC FENDERS

For durability and easy replacement

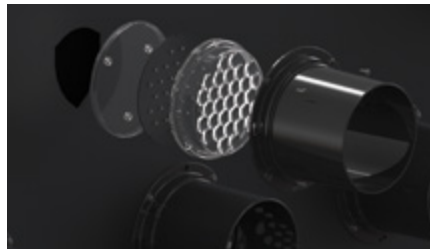
2-IN. (51 MM) COUPLER OR 3-IN. (76 MM) PINTLE EYE

For easy towing

ENERGY-EFFICIENT DESIGN

OPTIBRIGHT TECHNOLOGY

- Exclusive energy-efficient lens mold.
- Easier replacement of lamps
- Autonomous performance



SOLAR PANEL

Provides maximum solar recharging during all four seasons.

SOLAR REGULATOR

Protects the batteries against overcharge, over-discharge and short circuits

- Designed to run 12 months in most regions without manual charging.

APPLICATIONS

- Highway construction
- Department of Transportation (DOT)
- City and county
- Utility
- Smart Work Zone

DISPLAY

- Arrowboard panel: 48 in. x 96 in. (1219 mm x 2438 mm)
- 15 LED lamps with OptiBright Technology
- 2 back LED lights
- 28 LEDs per lamp

DIMENSIONS AND WEIGHT

- Overall length: 134 in. (3415 mm)
- Overall width: 96 in. (2438 mm)
- Operating height : 135.5 in. (3442 mm)
- Travelling width: 70 in. (1788 mm)
- Travelling height: 93 in. (2362 mm)
- Weight (approx.): 420 kg (920 lb.)

OPTIONS

- Weatherproof battery charger
- Smart arrowboard
- Smart arrowboard retrofit

Other options are available to meet your needs.

WARRANTY

- 1 year on complete trailer
- 2 years on electronic components manufactured by Ver-Mac





PRO

SERIES

ST-4825

TRAILER-MOUNTED ARROWBOARD

Ver-Mac's ST-4825 Pro Series is a trailer-mounted arrowboard with 25 LED lamps. It features our innovative Single-Mast Design, V-Switch controller, Stealth Technology and is wired to integrate the Smart Arrowboard option. The unit combines energy-efficient design and high-quality construction to provide the most reliable, cost-effective and safe to operate arrowboard on the market.



PRO SERIES FEATURES

STEALTH TECHNOLOGY

Maintenance-Free Batteries
Anti-Theft Hidden Battery Compartment

IMPROVED SINGLE MAST DESIGN

Diamond Plate Maintenance Platform
Rugged Indexed Rod Mast Brake
Tongue Wheel Jack for easy and safe set up
Secure Support of Arrowboard for Transport
Safely Set and Turn Arrowboard to Traffic

V-SWITCH CONTROLLER

Easy-to-use rotary switch to quickly select arrow patterns/mode
Real-time arrow, solar & battery status
Lockable control box for more security
Photocell with automatic adjustment

SMART ARROWBOARD OPTION

Plug & Play Set up
Lane Closure Start Location
Mode Displayed on Arrow Sign
Road Name & Mile Marker Where Deployed
Direction of Traffic
Side of Road Where Deployed
Ability to retrofit existing arrowboards



V-Switch Controller

SINGLE-MAST DESIGN

ARROWBOARD PROTECTED IN TRAVEL POSITION

Safer to use and more efficient to store and transport

LOW CENTER OF GRAVITY REDUCES WIND DRAG

Saving fuel costs

QUICK AND EASY TO SET UP IN TIGHT WORK ZONES

Saving time

ANGLE THE ARROWBOARD INDEPENDENTLY TOWARDS TRAFFIC

Safely set and turn arrowboard to traffic

EASY MAINTENANCE PLATFORM

Diamond plates make it easy and safe to perform maintenance

HIGH-QUALITY CONSTRUCTION

POWDER COATING SUPERIOR FINISH

Impact, humidity, salt spray and rust resistant

4 ADJUSTABLE TELESPARS

For trailer stabilization and easy transportation

TONGUE WHEEL JACK

For easy and safe trailer set up

REMOVABLE TONGUE

Saves space for storage

MANUAL LIFT MECHANISM

For quick deployment

U-SHAPED CRADLE FOR ARROWBOARD

For better support during transportation

RUGGED INDEXED ROD MAST BRAKE

The arrow can be positioned on 204 degrees (17 deg. increments)

HEAVY-DUTY PLASTIC FENDERS

For durability and easy replacement

2-IN. (51 MM) COUPLER OR 3-IN. (76 MM) PINTLE EYE

For easy towing

DISPLAY

- Arrowboard panel: 48 in. x 96 in. (1219 mm x 2438 mm)
- 25 LED lamps
- 2 back LED lights

WARRANTY

- 1 year on complete units
- 2 years on electronic components manufactured by Ver-Mac

DIMENSIONS AND WEIGHT

- Overall length: 134 in. (3415 mm)
- Overall width: 96 in. (2438 mm)
- Operating height : 135.5 in. (3442 mm)
- Travelling width: 70 in. (1788 mm)
- Travelling height: 93 in. (2362 mm)
- Weight (approx.): 420 kg (920 lb.)

OPTIONS

- Battery charger
 - Smart arrowboard
 - Smart arrowboard retrofit
- Other options are available to meet your needs.

ENERGY-EFFICIENT DESIGN

OPTI POWER LENS

Designed to maximize each LED output and utilize less energy

SOLAR PANEL

Provides maximum solar recharging during all four seasons.

SOLAR REGULATOR

Protects the batteries against overcharge, over-discharge and short circuits

- Designed to run 12 months in most regions without manual charging.

APPLICATIONS

- Highway construction
- Department of Transportation (DOT)
- City and county
- Utility
- Smart Work Zone

