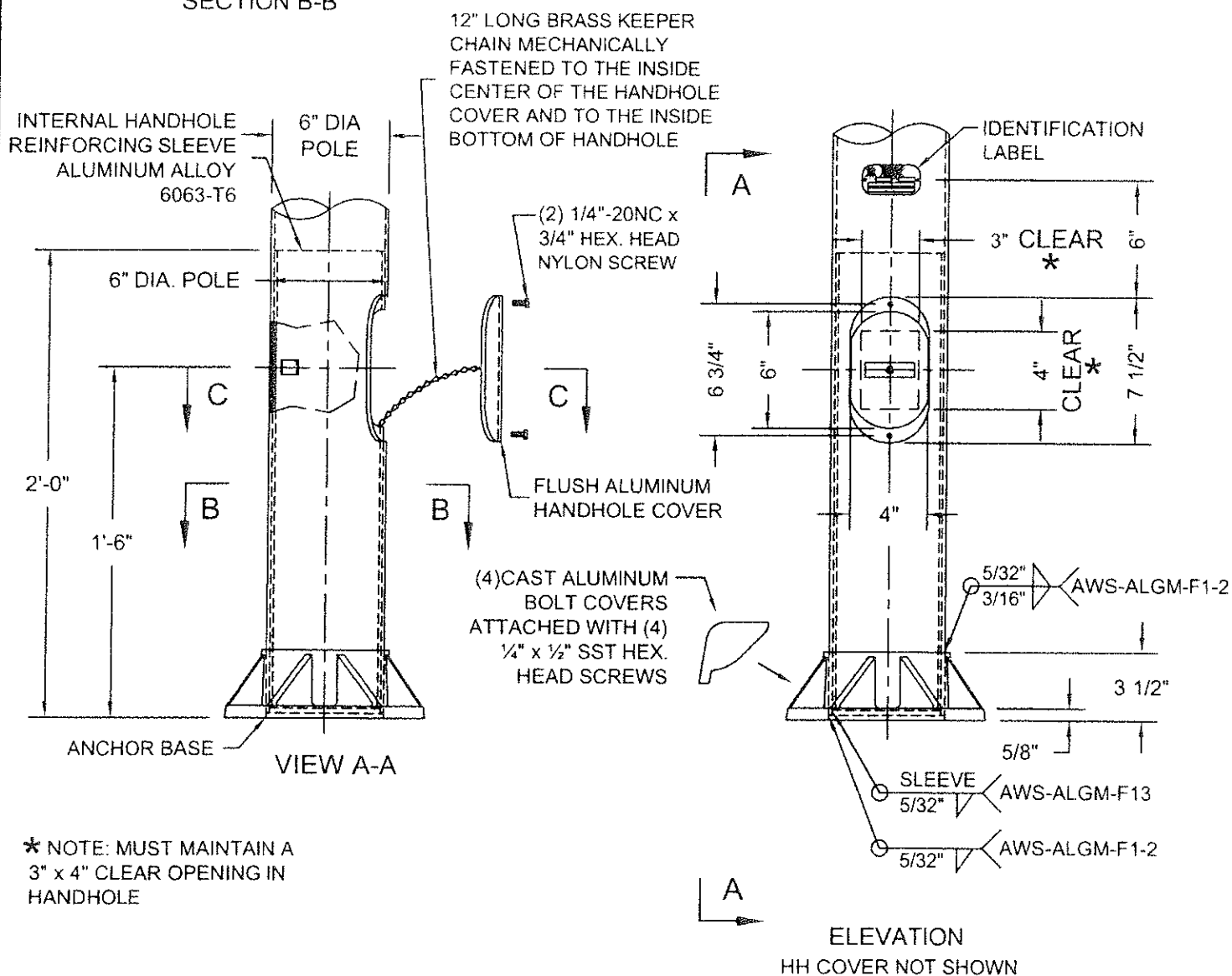


SECTION C-C



DO NOT SCALE

**valmont** 

Structures Division, Valmont Industries, Inc.  
20805 Eaton Ave Farmington,  
Minnesota 55024-0228  
Phone: (651) 463-8990 (800) 899-7577  
Fax: (651) 463-3349

**\*\*CONFIDENTIAL\*\***

The information contained in this drawing is privileged and confidential, and may be protected from disclosure. Please be aware that any use or dissemination of this drawing may be subject to legal restriction or sanction.

TITLE: N 6" DIA. POLE BASE & 4" x 6" HANDHOLE			QTY:	
MODEL NO.:			DWN BY: R.J.	
MATERIAL: ALUMINUM ALLOY			CHK'D BY:	
FINISH: SATIN GROUND			APPR BY:	
PROJECT: CITY OF OVERLAND PARK, KS			DATE:	
SOLD TO:			05-14-03	
SHIP TO:				
P.O. NO:				
REP: POWER EQUIPMENT				
4	03-28-14	REVISED V-GROUND SIZE	S.L.	DWG NO:
3	11-25-08	ANCHOR BASE WELDING	R.J.	KS-85
2	10-20-06	WELDING	R.J.	PAGE:
REV	DATE	REVISION DESCRIPTION	BY	18 / 25