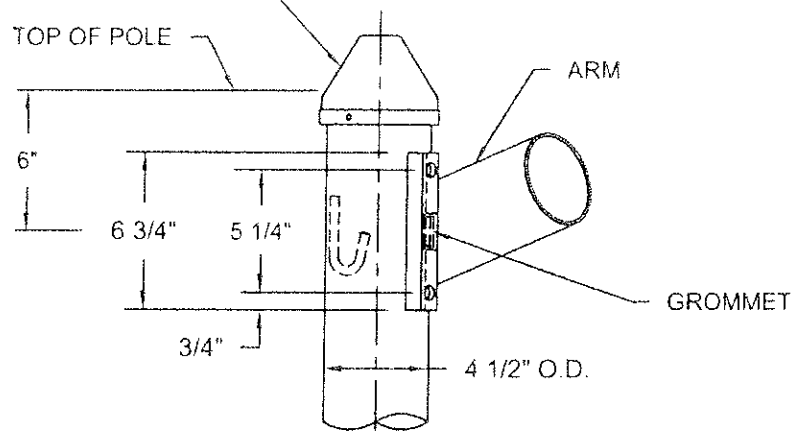


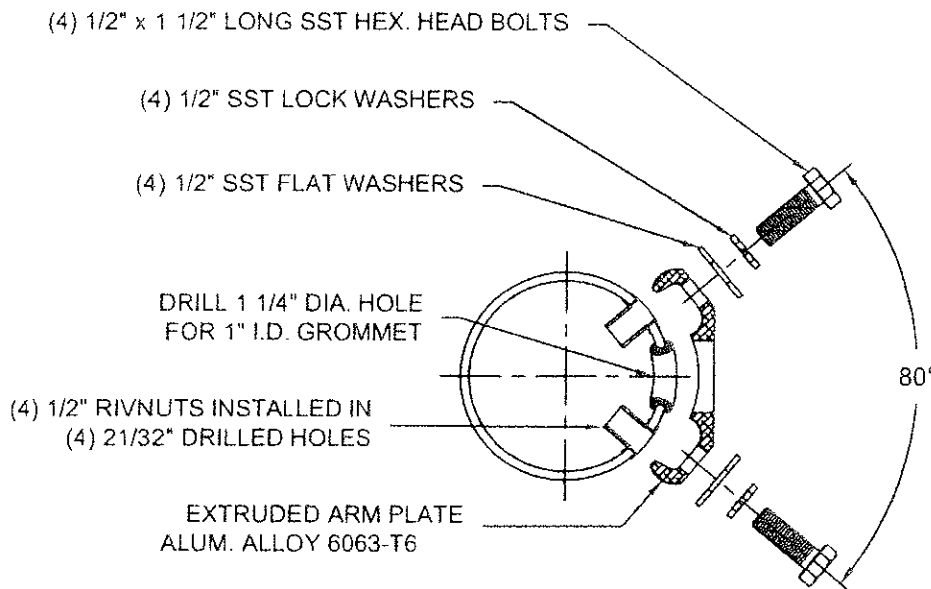
SPUN ALUMINUM POLE CAP WITH
(3) 1/4"-20NC x 1/2" SST HEX.
SOCKET HEADLESS SET SCREWS



ARM MOUNTING

TIGHTENING SEQUENCE
FOR Ø1/2" STAINLESS
STEEL BOLTS.

- TIGHTEN WITH HAND.
- APPLY 37.50 ft.lbs
- APPLY 47.50 ft.lbs
- APPLY 50.00 ft.lbs



TYPICAL SECTION




DO NOT SCALE

valmont 

Structures Division, Valmont Industries, Inc.
20805 Eaton Ave. Farmington,
Minnesota 55024-0228
Phone: (651) 463-8990 (800) 899-7577
Fax: (651) 463-3349

****CONFIDENTIAL****

The information contained in this drawing is privileged and confidential,
and may be protected from disclosure. Please be aware that any use or
dissemination of this drawing may be subject to legal restriction or sanction.

TITLE: N TYPE A - SINGLE MEMBER ARM ATTACHMENT - SINGLE		QTY:
MODEL NO.:		DWN BY:
MATERIAL: ALUMINUM ALLOY		R.J.
FINISH: SATIN GROUND		CHKD BY:
PROJECT: CITY OF OVERLAND PARK, KS		APPR BY:
SOLD TO:		DATE:
SHIP TO:		05-14-03
P.O. NO:		DWG NO:
REP: POWER EQUIPMENT		KS-83-S
 07-13-10	SINGLE & TWIN SEPARATED	R.J.
 10-20-06	J HOOK WELDING	R.J.
 10-15-04	J HOOK ADDED	R.J.
REV	DATE	REVISION DESCRIPTION
		BY 14 / 25