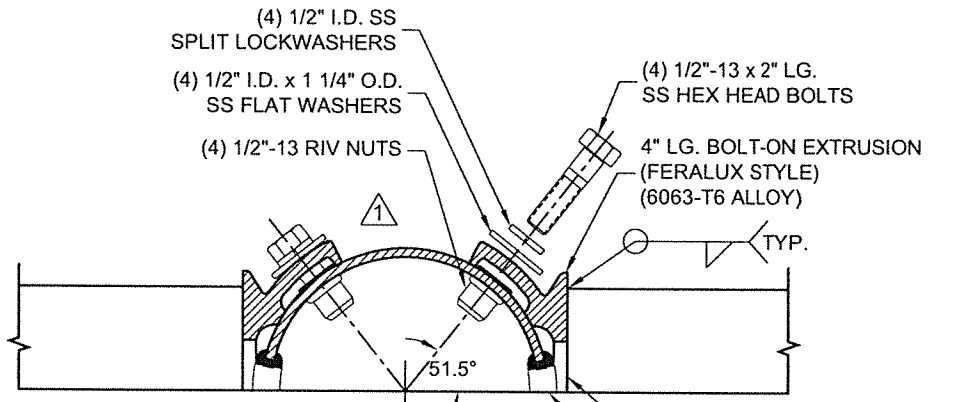
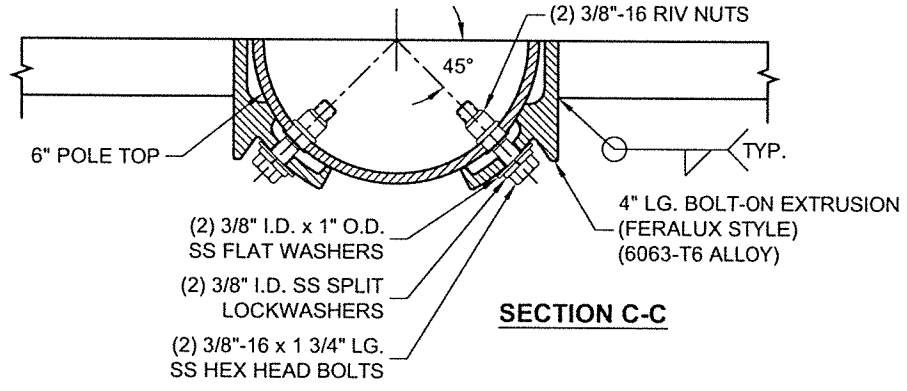


⚠ TIGHTENING SEQUENCE FOR Ø 1/2" STAINLESS STEEL BOLTS
 - TIGHTEN WITH HAND
 - APPLY 30 FT.LBS

⚠ TIGHTENING SEQUENCE FOR Ø 3/8" STAINLESS STEEL BOLTS
 - TIGHTEN WITH HAND
 - APPLY 16 FT.LBS



SECTION B-B



SECTION C-C

DO NOT SCALE

TYPE OP 8' TRUSS ARM



Valmont Industries, Inc. Structures Division
 20805 Eaton Ave Farmington, Minnesota 55024-7932
 Phone: (651) 463-8990 (800) 899-7577
 Fax: (651) 463-3349

TITLE:	S 8' x 39" x 3.5" SGL OR DBL TRUSS ARM 6"	QTY:	
MODEL NO.:	(1) OR (2) TA0839B60K	OWN BY:	PVB
MATERIAL:	ALUMINUM ALLOY	CHK'D BY:	
FINISH:	100 GRIT SATIN POLISH	APPR BY:	MPS
PROJECT:		DATE:	09-22-17
SOLD TO:	CITY OF OVERLAND PARK, KS	DWG NO:	DSOP
SHIP TO:		PAGE:	
P.O. NO:		BY:	11 / 18
REP:	POWER EQUIPMENT SALES		

****CONFIDENTIAL****

The information contained in this drawing is privileged and confidential, and may be protected from disclosure. Please be aware that any use or dissemination of this drawing may be subject to legal restriction or sanction.

REV	DATE	REVISION DESCRIPTION	BY
⚠	04/06/18	DELETED NUTS; ADDED NOTES & RADIUS	KPS