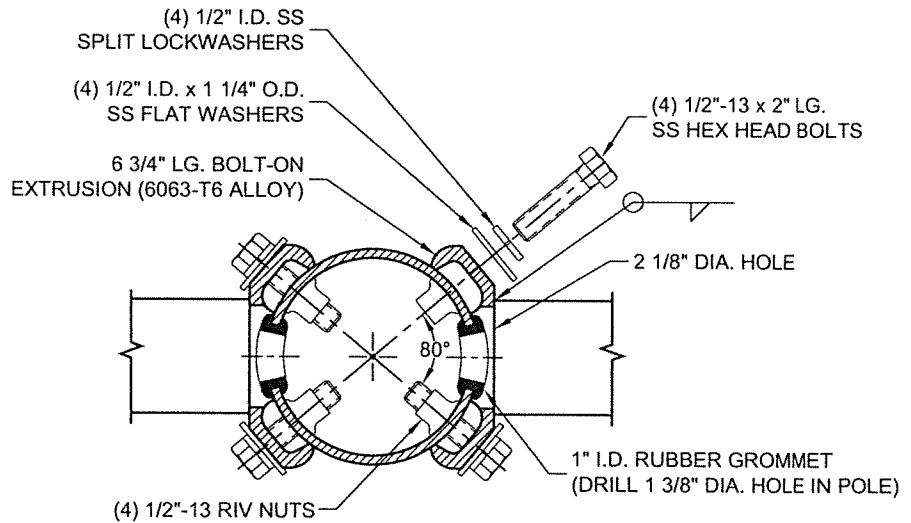


TIGHTENING SEQUENCE FOR Ø 1/2" STAINLESS STEEL BOLTS
 - TIGHTEN WITH HAND
 - APPLY 30 FT.LBS



SECTION A-A

DO NOT SCALE

TYPE OP 8' SINGLE ARM



Valmont Industries, Inc. Structures Division
 20805 Eaton Ave Farmington, Minnesota 55024-7932
 Phone: (651) 463-8990 (800) 899-7577
 Fax: (651) 463-3349

| | | | |
|------------|--|-------------|--------------------------------|
| TITLE: | S 8' x 30" x 3.5" SGL OR DBL MAST ARM 4.5" | QTY: | |
| MODEL NO.: | (1) OR (2) MA0830B45D | OWN BY: | PVB |
| MATERIAL: | ALUMINUM ALLOY | CHK'D BY: | |
| FINISH: | 100 GRIT SATIN POLISH | APPR BY: | |
| PROJECT: | | DATE: | 09-22-17 |
| SOLD TO: | CITY OF OVERLAND PARK, KS | DWG NO: | DSOP |
| SHIP TO: | | PAGE: | |
| P.O. NO: | | REV | |
| REP: | POWER EQUIPMENT SALES | DATE | 04/06/18 |
| | | DESCRIPTION | UPDATED DIM. UNIT & ADDED NOTE |
| | | BY | KPS |
| | | | 10 / 18 |

****CONFIDENTIAL****

The information contained in this drawing is privileged and confidential, and may be protected from disclosure. Please be aware that any use or dissemination of this drawing may be subject to legal restriction or sanction.