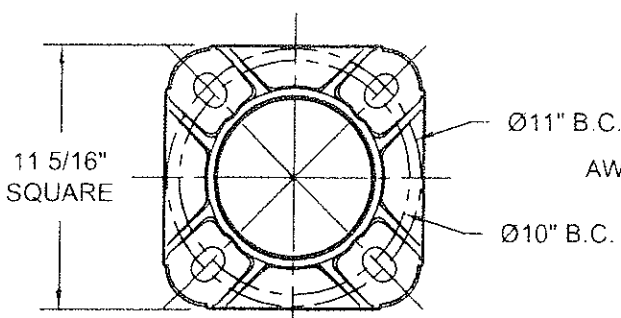


5



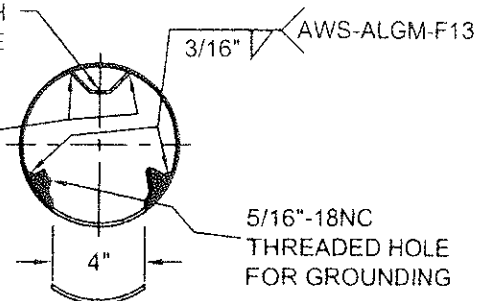
ANCHOR BASE 7"-1992  
356-T6 ALUMINUM ALLOY

SECTION B-B

1" WIDE x 1/4" ALUM.  
GROUND BAR WITH  
3/8"-16 TAPPED HOLE

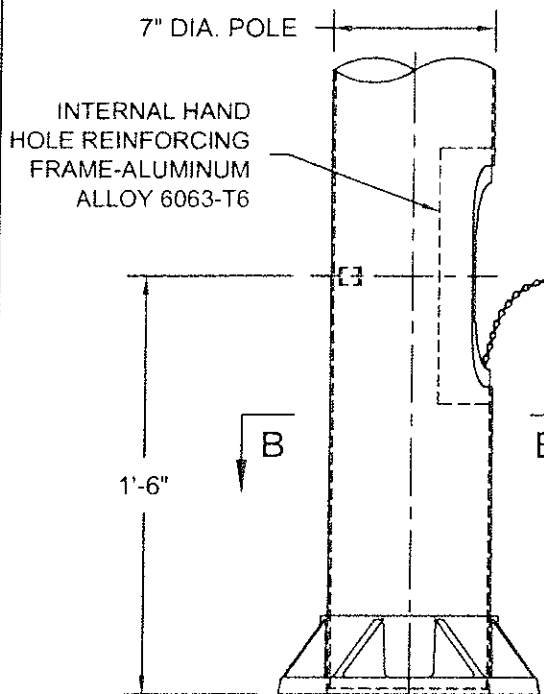
AWS-ALGM-F13

3/16



SECTION C-C

12" LONG BRASS KEEPER  
CHAIN MECHANICALLY  
FASTENED TO THE INSIDE  
ENTER OF THE HANDHOLE  
COVER AND TO THE INSIDE  
BOTTOM OF HANDHOLE

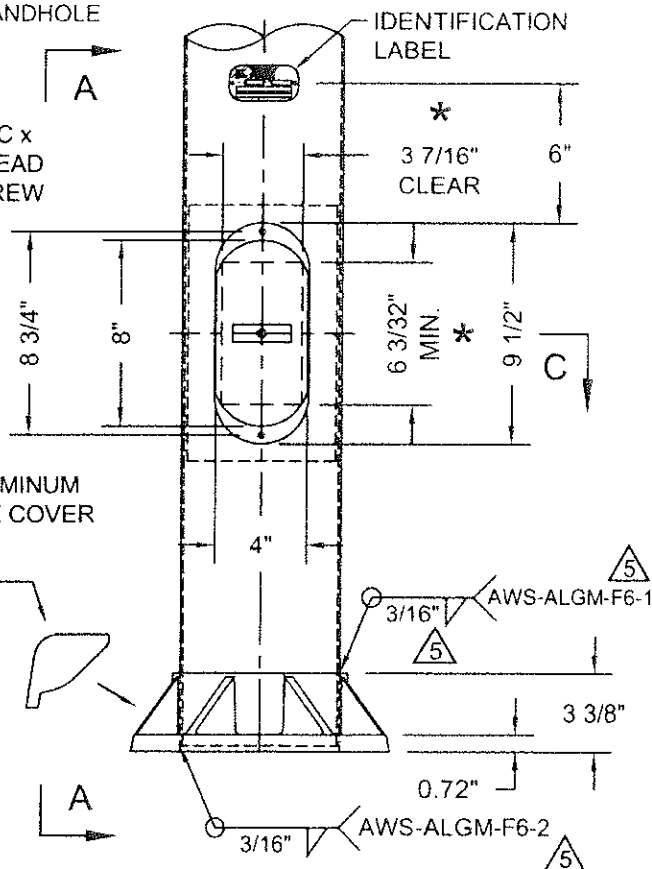


VIEW A-A

(4) CAST ALUMINUM  
BOLT COVERS  
ATTACHED WITH (4)  
1/4" x 1/2" SST HEX.  
HEAD SCREWS

ANCHOR BASE

FLUSH ALUMINUM  
HANDHOLE COVER



ELEVATION

HH COVER NOT SHOWN

\* NOTE: MUST MAINTAIN A  
3 7/16" x 6 3/32" CLEAR  
OPENING IN HANDHOLE

DO NOT SCALE

**valmont**

Structures Division, Valmont Industries, Inc.  
20805 Eaton Ave. Farmington,  
Minnesota 55024-0228  
Phone: (651) 463-8990 (800) 899-7577  
Fax: (651) 463-3349

TITLE: N 7" DIA. POLE BASE & 4" x 8" HANDHOLE

MODEL NO.:  
MATERIAL: ALUMINUM ALLOY  
FINISH: SATIN GROUND  
PROJECT: CITY OF OVERLAND PARK, KS  
SOLD TO:  
SHIP TO:  
P.O. NO:  
REP: POWER EQUIPMENT

QTY:  
OWN BY:  
CHK'D BY:  
APPR BY:  
DATE:  
05-14-03

5	03-28-14	REV'D V-GROUND, WELD SIZE AND PROCEDURE	S.L.
5	11-25-08	ANCHOR BASE WELDING	R.J.
5	10-20-06	WELDING	R.J.
REV	DATE	REVISION DESCRIPTION	BY

DWG NO:  
KS-86  
PAGE:  
19 / 25

\*\*CONFIDENTIAL\*\*

The information contained in this drawing is privileged and confidential,  
and may be protected from disclosure. Please be aware that any use or  
dissemination of this drawing may be subject to legal restriction or sanction