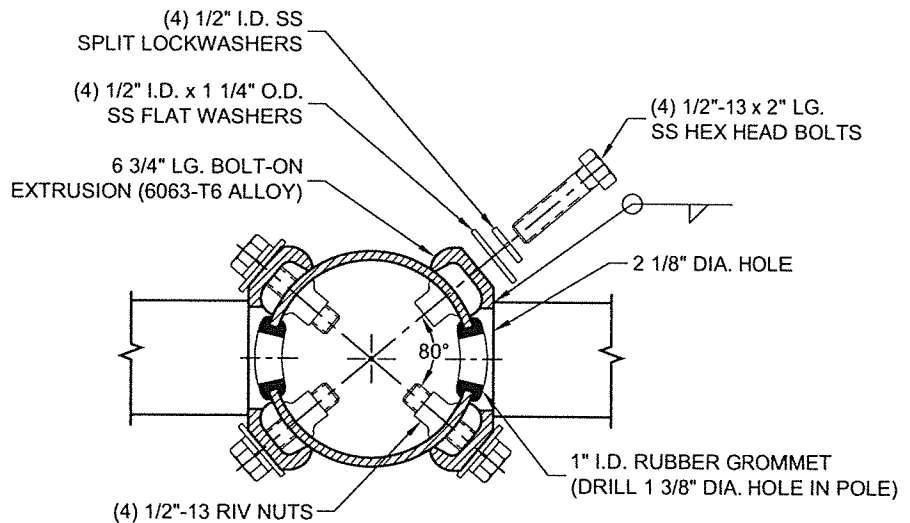


TIGHTENING SEQUENCE
 FOR Ø 1/2" STAINLESS
 STEEL BOLTS
 - TIGHTEN WITH HAND
 - APPLY 30 FT.LBS



SECTION A-A

DO NOT SCALE

TYPE OP 6' SINGLE ARM



Valmont Industries, Inc. Structures Division
 20805 Eaton Ave Farmington, Minnesota 55024-7932
 Phone: (651) 463-8990 (800) 899-7577
 Fax: (651) 463-3349

TITLE:	S 6' x 30" x 3.5" SGL OR DBL MAST ARM 4.5"	QTY:	
MODEL NO.:	(1) OR (2) MA0630B45B	OWN BY:	PVB
MATERIAL:	ALUMINUM ALLOY	CHK'D BY:	
FINISH:	100 GRIT SATIN POLISH	APPR BY:	MPJ
PROJECT:		DATE:	09-22-17
SOLD TO:	CITY OF OVERLAND PARK, KS	DWG NO:	DSOP
SHIP TO:		PAGE:	
P.O. NO:		REV	9/18
REP:	POWER EQUIPMENT SALES	DATE	

****CONFIDENTIAL****

The information contained in this drawing is privileged and confidential, and may be protected from disclosure. Please be aware that any use or dissemination of this drawing may be subject to legal restriction or sanction.

△			
△	04/06/18	UPDATED DIM. UNIT & ADDED NOTE	KPS
△			
REV	DATE	REVISION DESCRIPTION	BY