

IPLW4-3 SHOWN

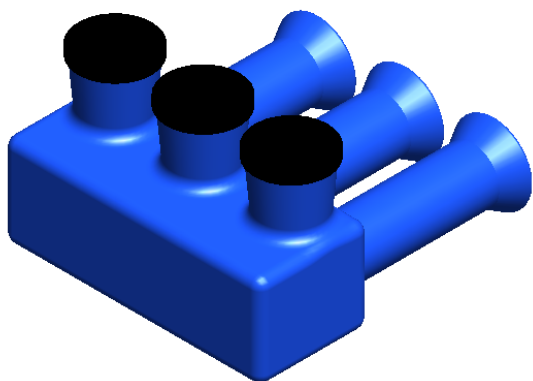
PART NUMBER	NO. OF PORTS	LENGTH
IPLW4-3	3	2.64
IPLW4-4	4	3.61
IPLW4-5	5	4.57
IPLW4-6	6	5.54

WIRE ENTRY PORT
WIRE RANGE: #4 - 6 AWG
PRE-FILLED W/ OXIDE INHIBITOR

NOTES:

1. CONNECTOR MATERIAL: 6061-T6511 ALUMINUM ALLOY.
2. UL LISTED FOR SUBMERSIBLE USE PER UL486D SPECIFICATIONS FOR 600V.
3. DUAL RATED FOR 90°C COPPER AND/OR ALUM. CONDUCTOR.

CONTACT NSi FOR SALES @ 800.321.5847



		POLARIS SALES CO. INC	
PROPRIETARY AND CONFIDENTIAL		11625 PROSPEROUS DRIVE ODESSA, FL 33556	
THE INFORMATION CONTAINED IN THIS DRAWING IS THE SOLE PROPERTY OF POLARIS SALES CO. INC. ANY REPRODUCTION IN PART OR AS A WHOLE WITHOUT THE WRITTEN PERMISSION OF POLARIS SALES CO. INC. IS PROHIBITED.		TITLE: #4 MULTI-PORT SUBMERSIBLE CONN.	
NAME	DATE	DWG. NO. IPLW4-	
DRAWN BY L. HILL	1/6/2012		
MATERIAL: N/A		SCALE: N/A	SHEET: 1 OF 1