

1118

OLDCASTLE POLYMER

(formerly H-Series)

COVER

Style:	Flush Solid
Material:	Polymer Concrete
Model:	11" x 18"
Weight:	Tier 15: 20 lbs. Tier 22: 28 lbs.
Std. Fasteners:	1/2-13 Stainless Steel Hex Head Bolt, Washer and Floating Nut
Options:	Logos and Special Markings
Surface:	Slip Resistant
Performance:	ANSI/SCTE-77, Tier 15 or Tier 22*

Cover comes standard with permanent markings for manufacturer, load rating, model size and manufacturing location.

BODY

Material:	Polymer Concrete
Model:	11" x 18"
Weight:	12" Depth: 39 lbs. 18" Depth: 54 lbs.
Wall Type:	Straight
Performance:	ANSI/SCTE-77 Tier 22

LOAD RATING / NOTES

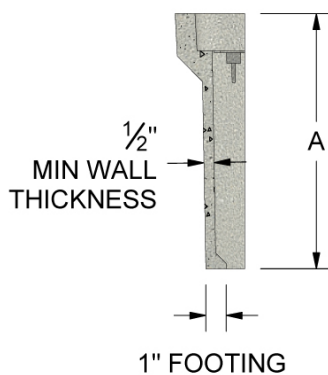
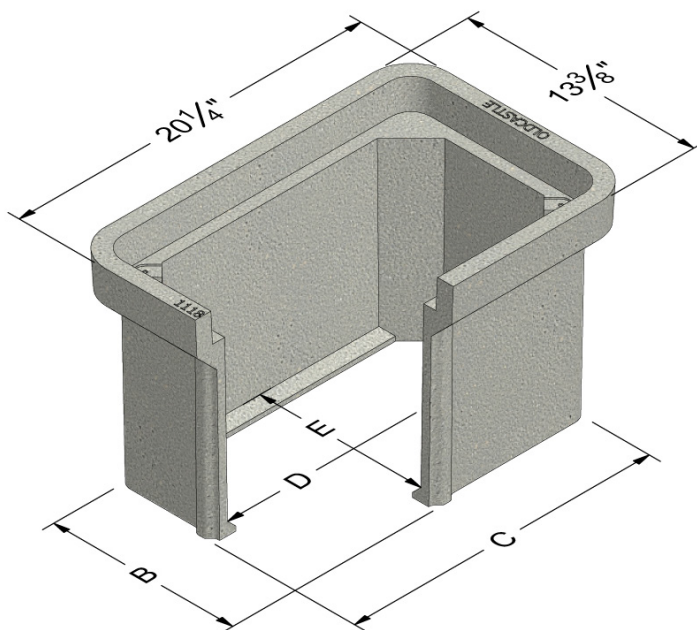
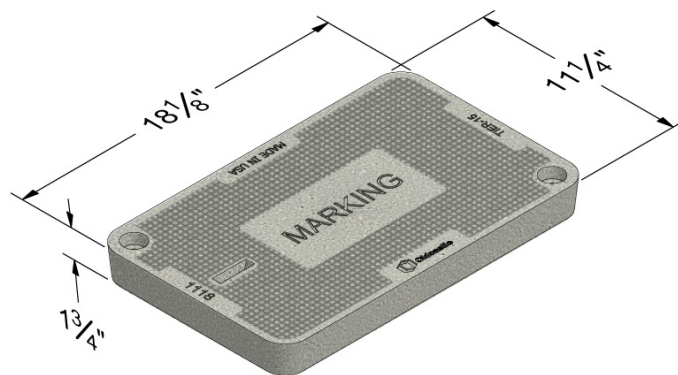


MEDIUM DUTY
ANSI/SCTE TIER 15



HEAVY DUTY
ANSI/SCTE TIER 22

For use in non-vehicular traffic situations only.
Weights and dimensions may vary slightly.
Actual load rating is determined by the box
and cover combination.



	A	B	C	D	E
1118-12	12	11-3/16	18-1/16	16-7/16	9-9/16
1118-18	18	11-1/16	17-15/16	16-3/16	9-5/16

* Based upon lid and body combination, this unit can be Tier 15 or Tier 22. T22 rating when paired with T22 polymer concrete lid.

1118

OLDCASTLE POLYMER

(formerly H-Series)

COVER OPTIONS

Oldcastle Polymer, Flush Solid

Steel, Solid



Polymer
Solid



Steel
Solid

FASTENER OPTIONS

Hex Head Bolt (A)

Penta Head Bolt (B)

Penta Head Coil Thread Bolt (B)

Oldcastle Vandal Resistant Bolt (C)

Captive Bolt Retainer



Standard Thread



A



B



C



Coil Thread



Bolt Retainer
(for standard thread)

ADD ON OPTIONS

EMS Marker

Mouseholes/Knockouts

Rack Mount

Cable Racks/Cable Arms

Unistrut

Pulling Eye - 1,000 lb and 3,000 lb

Ground Buss

Dividers

Racking Provision

Lid Gaskets*

Solid Bottom

Custom Marking Plate (Polymer)



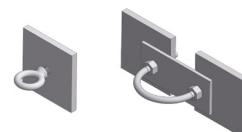
Rack Mount



Cable Rack
Cable Arm



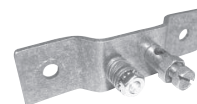
Unistrut



Pulling Eye



EMS Marker



Ground Buss

* Lid Gaskets inhibit water flow into the box, they do not make enclosure fully waterproof.

WARNING: Cancer - www.P65Warnings.ca.gov

All information contained on this sheet is current at the time of publication.
Oldcastle reserves the right to discontinue or update product information without notice.

Revision 11/09/18

© 2018 Oldcastle Infrastructure

OLDCASTLE POLYMER 1118

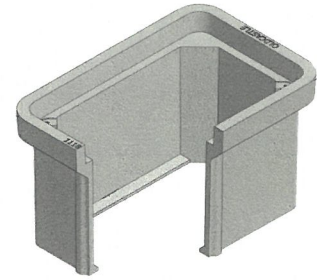
Polymer Concrete - 11" x 18" (formerly H-Series)



MEDIUM DUTY
ANSI/SCTE TIER 15



HEAVY DUTY
ANSI/SCTE TIER 22



RATING	PART #	DESC 1	DESC 2	COLOR	DEPTH	ITEM WEIGHT	PALLET QTY	DESIGN LOAD (LB)	QUICK SHIP
Body - 1118									
T22	11182001	Body, PC1118-12,SW	PC111812SW	Gray	12"	47.0	21	22500	
T22	11182003	Body, PC1118-18,SW	PC111818SW	Gray	18"	70.0	21	22500	
Lid - 1118									
T15	11184606	Lid, PC1118-T, T15 -"Electric"	PC1118T-T15	Gray	-	20.0	60	15000	
T15	11184607	Lid, PC1118-T, T15_'FIBER OPTICS'	PC1118T-T15_457	Gray	-	20.0	60	15000	
T15	11184608	Lid, PC1118-T, T15 -"Ground"	PC1118T-T15	Gray	-	20.0	60	15000	
T15	11184609	Lid, PC1118-T, T15 -"Street Lighting"	PC1118T-T15	Gray	-	20.0	60	15000	
T15	11184611	Lid, PC1118-T, T15 -"Traffic Signal"	PC1118T-T15	Gray	-	20.0	60	15000	
T15	11184612	Lid, PC1118-T, T15, - Blank	PC1118T-T15	Gray	-	20.0	60	15000	
T15	11184694	Lid, PC1118-T, T15 -SPECIAL w/MARKING PLATE	PC1118T-T15 999	Gray	-	20.0	60	15000	
T22	11184001	Lid, PC1118-T, T22 -"Electric"	PC1118T-T22	Gray	-	28.0	60	22500	
T22	11184003	Lid, PC1118-T, T22 - Blank	PC1118T-T22	Gray	-	28.0	60	22500	
T22	11184007	Lid, PC1118-T, T22 - "Street Lighting"	PC1118T-T22	Gray	-	28.0	60	22500	
T22	11184009	Lid, PC1118-T, T22 - "Traffic Signal"	PC1118T-T22	Gray	-	28.0	60	22500	
T22	11184613	Lid, PC1118-T, T22 - "Ground"	PC1118T-T22	Gray	-	28.0	60	22500	
T22	11185002	Lid, PC1118-T, T22_'FIBER OPTICS'	PC1118T-T22_457	Gray	-	28.0	60	22500	
T22	11184695	Lid, PC1118-T, T22 - SPECIAL w/MARKING PLATE	PC1118T-T22 999	Gray	-	28.0	60	22500	
Unit - 1118 (Units come standard with Body-Open Bottom, Lid, and SS Hex Bolt Floating Nut Hardware)									
T15	11181604	Unit, PC1118-12, T15 - Blank	PC111812-T15	Gray	12"	67.0	21	15000	
T15	11181605	Unit PC 1118-12 T15 'MRKNG PLT REQ'	PC111812-T15	Gray	12"	67.0	21	15000	
T15	11181608	Unit, PC1118-12, T15 -"Electric"	PC111812-T15	Gray	12"	67.0	21	15000	
T15	11181609	Unit, PC1118-12, T15_'FIBER OPTICS'	PC111812-T15_457	Gray	12"	67.0	21	15000	
T15	11181610	Unit, PC1118-12, T15 -"Ground"	PC111812-T15	Gray	12"	67.0	21	15000	
T15	11181611	Unit, PC1118-12, T15 -"Street Lighting"	PC111812-T15	Gray	12"	67.0	21	15000	
T15	11181613	Unit, PC1118-12, T15 -"Traffic Signal"	PC111812-T15	Gray	12"	67.0	21	15000	
T22	11181001	Unit, PC1118-12, T22 - "Electric"	PC111812-T22	Gray	12"	73.0	21	22500	
T22	11181002	Unit, PC1118-18 T22 HBlT 'MRKNG PLT REQ'	PC111812-T22	Gray	12"	73.0	21	22500	
T22	11181003	Unit, PC1118-12, T22 - Blank	PC111812-T22	Gray	12"	73.0	21	22500	
T22	11181007	Unit, PC 1118-18 - "Electric"	PC111812-T22	Gray	18"	100.0	21	22500	
T22	11181009	Unit, PC 1118-18 - Blank	PC111812-T22	Gray	18"	100.0	21	22500	
T22	11181615	Unit, PC1118-12, T22_'FIBER OPTICS'	PC111812-T22_457	Gray	12"	73.0	21	22500	
T22	11181616	Unit, PC1118-12, T22 - "Ground"	PC111812-T22	Gray	12"	73.0	21	22500	
T22	11181617	Unit, PC1118-12, T22 - "Street Lighting"	PC111812-T22	Gray	12"	73.0	21	22500	
T22	11181619	Unit, PC1118-12, T22 - "Traffic Signal"	PC111812-T22	Gray	12"	73.0	21	22500	

Products are rated by the lowest component rating.
Tier 15 cover with a tier 22 body is rated tier 15.
Tier 22 cover with a tier 22 body is rated tier 22.