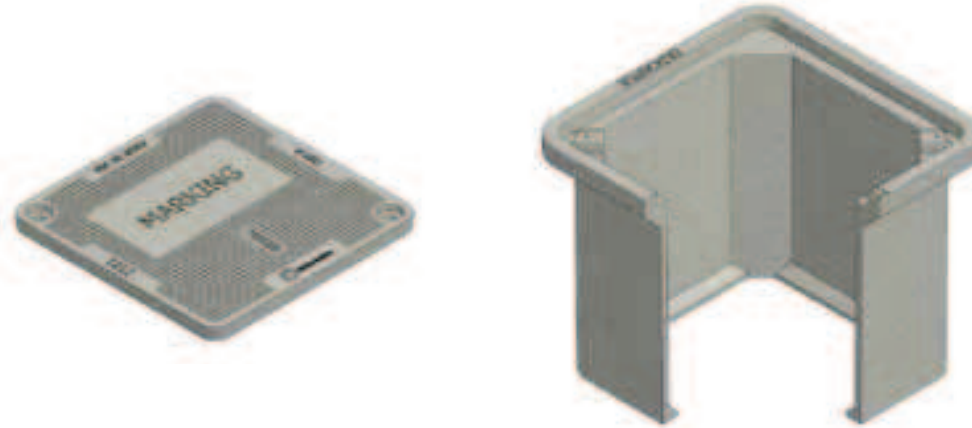


## H-Series - 1212 Polymer Concrete

 **Heavy Duty**  
Non-deliberate Traffic

 **Tier 22\***



\*Products are rated by the lowest component rating. A tier 15 cover with a tier 22 body is rated tier 15. A tier 22 cover with a tier 22 body is rated tier 22.

See Accessories Section in the Back of this Manual for Options, Hardware, Specialty Markings and Other Accessories

RATING	Part#	Description 1	Description 2	Color	Depth	Item Weight	Pallet Qty	List Price	Line Item Discount	Design Load
<b>Body - 1212</b>										
22	12122001	Body, PC 1212-12 SW, HLW	PC1212T-T22	Gray	12	35	36	\$110.83	OC03	22,500
<b>Lid - 1212</b>										
T22	12124001	Lid, PC 1212 HLW - "Electric"	PC1212T-T22	Gray	-	11	40	\$52.35	OC03	22,500
	12124003	Lid, PC 1212 HLW - No Mark	PC1212T-T22	Gray	-	11	40	\$52.35	OC03	22,500
	12124005	Lid, PC 1212 HLW - "Traffic"	PC1212T-T22	Gray	-	11	40	\$52.35	OC03	22,500
	12124006	Lid, PC 1212 HLW - "Street Lighting"	PC1212T-T22	Gray	-	11	40	\$52.35	OC03	22,500
	12124009	Lid, PC 1212 HLW - "Ground"	PC1212T-T22	Gray	-	11	40	\$52.35	OC03	22,500
	12124010	Lid, PC1212 HLW - "Traffic Signal"	PC1212T-T22	Gray	-	11	40	\$52.35	OC03	22,500
<b>Unit - 1212 (Units come standard with Body-Open Bottom, Lid and SS Hex Bolt Floating Nut Hardware)</b>										
T22	12121001	Unit, PC 1212-12 HLW - "Electric"	PC1212T-T22	Gray	12	46	36	\$144.40	OC03	22500
	12121003	Unit, PC 1212-12 HLW - No Mark	PC1212T-T22	Gray	12	46	36	\$144.40	OC03	22500

## H-Series - 1324 Rectangular & Flared Wall (FW) Polymer Concrete

**Straight Wall**

 **Medium Duty**  
Non-deliberate Traffic



\*Products are rated by the lowest component rating. A tier 15 cover with a tier 22 body is rated tier 15. A tier 22 cover with a tier 22 body is rated tier 22.