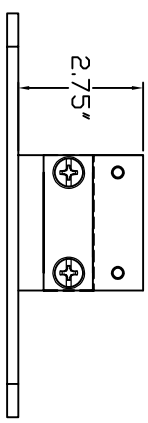
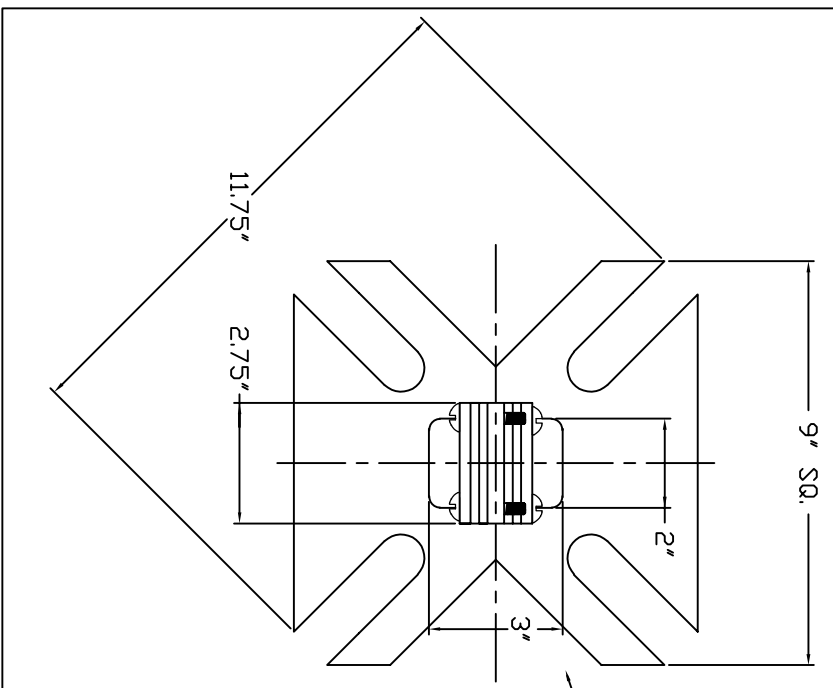



- NOTES-
1. BASEPLATE MATERIAL: HOT ROLLED STEEL PER ASTM A36; 1/4" THICK
  2. HOT DIP GALVANIZE PER ASTM A153-(LATEST REV.).

Ø6" TD 9.8"  
BOLT CIRCLE  
FOR 1" HARDWARE



==INCLUDED HARDWARE==  
<4>--1-8UNC X 3.5" HEX HEAD  
BOLT PER SAE J429 GRD 5.



CHANCE		 <b>HUBBELL POWER SYSTEMS</b>	
<small>         CONFIDENTIAL: THIS DRAWING AND ITS CONTENTS ARE CONFIDENTIAL AND THE EXCLUSIVE PROPERTY OF HUBBELL POWER SYSTEMS. NO PART OF THIS DRAWING OR ITS CONTENTS MAY BE REPRODUCED OR TRANSMITTED IN ANY FORM OR BY ANY MEANS, WITHOUT THE WRITTEN CONSENT OF HUBBELL POWER SYSTEMS. UNPUBLISHED. ALL RIGHTS RESERVED UNDER THE COPYRIGHT LAW.       </small>		<small>         TITLE  <b>REMEDIATION ANTI THEFT ASSEMBLY</b> </small>	
<small>         SIZE          SB SA1122800       </small>	<small>         DWG NO.          T1122800       </small>	<small>         CMT / PART / ASSY NO.          1122800       </small>	<small>         REV          A       </small>
<small>         DO NOT SCALE THIS DRAWING       </small>	<small>         DWN BY          BLJ       </small>	<small>         DATE          6/18/2021       </small>	<small>         SHEET          1/1       </small>

Type R Foundations