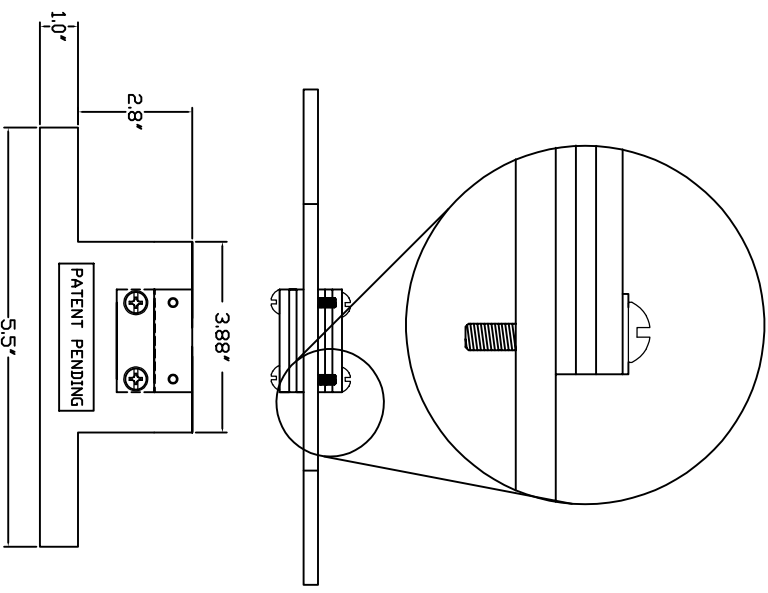
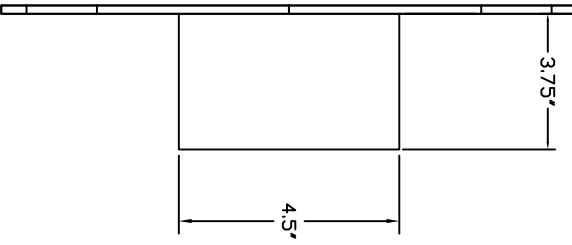
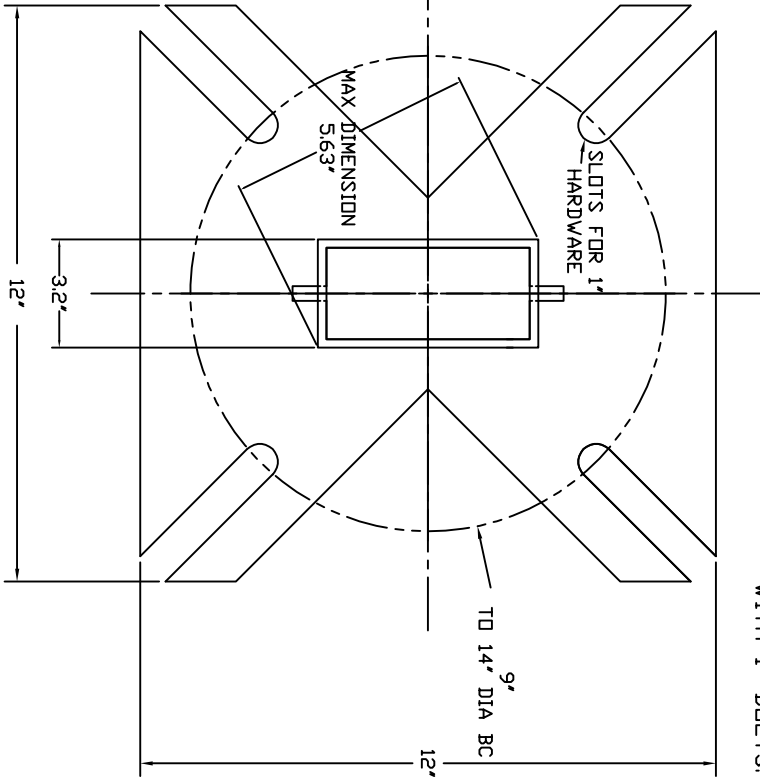



-NOTES-

1. BASEPLATE MATERIAL: HOT ROLLED STEEL PER ASTM A36; 1/4" THICK.
2. HOT DIP GALVANIZE PER ASTM A153-(LATEST REV.).
3. FOR USE WITH 8' CHANCE BASE C11232JG4VL OR AN EXISTING BASE WITH A 9" TD 14" BOLT CIRCLE WITH 1" BOLTS.



==INCLUDED HARDWARE==
 (4)--1-8UNC X 3.5" HEX HEAD
 BOLT PER SAE J429 GRD 5.

CHANCE		 HUBBELL POWER SYSTEMS REMEDIAL ANTI THEFT ASSEMBLY	
CONFIDENTIAL- THIS DRAWING AND ITS CONTENTS ARE CONFIDENTIAL AND THE EXCLUSIVE PROPERTY OF HUBBELL POWER SYSTEMS. NO PUBLICATION, REPRODUCTION OR DISSEMINATION OF THIS DRAWING OR ITS CONTENTS SHALL BE MADE WITHOUT THE WRITTEN CONSENT OF HUBBELL POWER SYSTEMS. UNPUBLISHED ALL RIGHTS RESERVED UNDER THE COPYRIGHT LAWS.		TITLE DO NOT SCALE THIS DRAWING	SIZE SB SA1122779
DWG NO. SA1122779	CAT / PART / ASSY NO. C1122779	DWN BY BLJ	DATE 6/18/2021
SHEET 1/1	REV A		