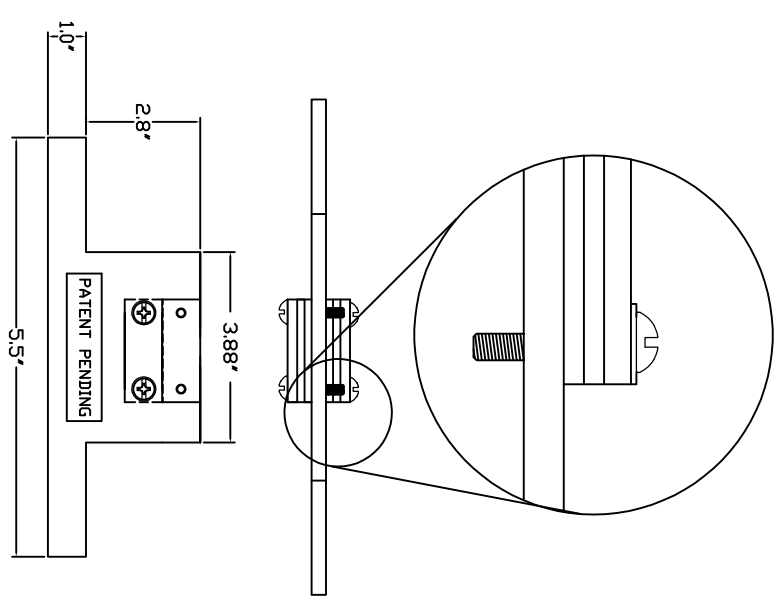
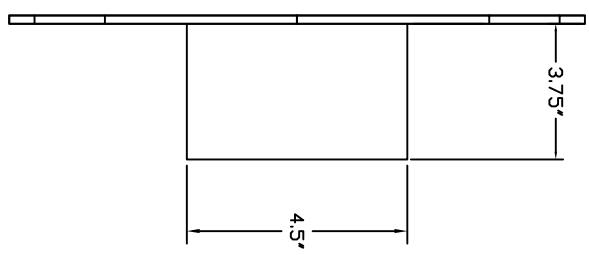
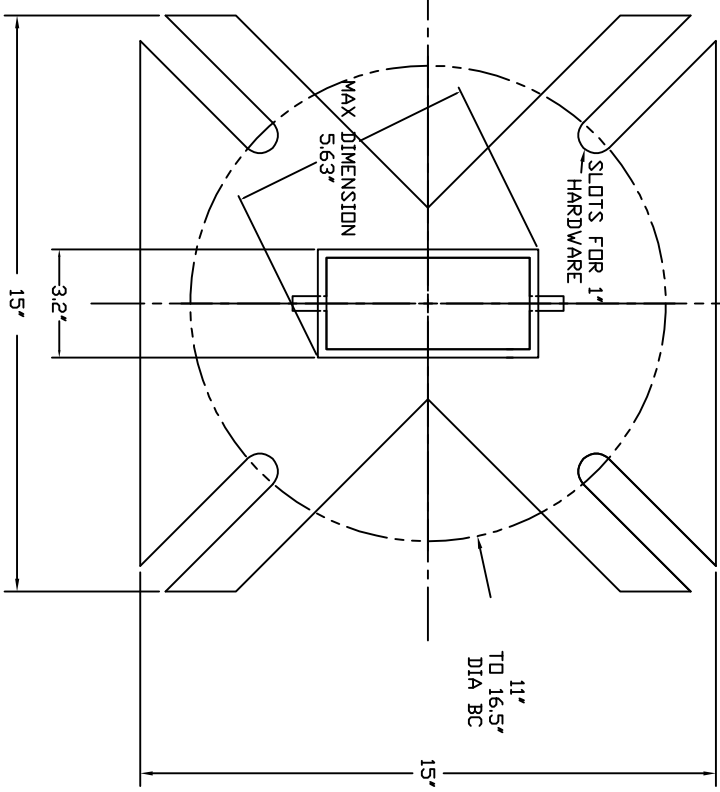



-NOTES-

1. BASEPLATE MATERIAL: HOT ROLLED STEEL PER ASTM A36; 1/4" THICK.
2. HOT DIP GALVANIZE PER ASTM A153-(LATEST REV.).
3. FOR USE WITH 8' CHANCE BASE T11202940101 OR AN EXISTING BASE WITH A 11" TD 16.5" BOLT CIRCLE WITH 1" BOLTS.



==INCLUDED HARDWARE==
 (4)--1-8UNC X 3.5" HEX HEAD
 BOLT PER SAE J429 GRD 5.

CHANCE		 HUBBELL POWER SYSTEMS REMEDIAL ANTI THEFT ASSEMBLY	
CONFIDENTIAL- THIS DRAWING AND ITS CONTENTS ARE CONFIDENTIAL AND THE EXCLUSIVE PROPERTY OF HUBBELL POWER SYSTEMS. NO PUBLICATION, DISTRIBUTION OR REPRODUCTION OF THIS DRAWING OR ITS CONTENTS OR HUBBELL POWER SYSTEMS UNPUBLISHED ALL RIGHTS RESERVED UNDER THE COPYRIGHT LAWS.		TITLE DO NOT SCALE THIS DRAWING	SIZE SB SA1122780
DWG NO. SA1122780	CAT / PART / ASSY NO. C1122780	DWN BY BLJ	DATE 6/18/2021
SHEET 1/1	REV A		