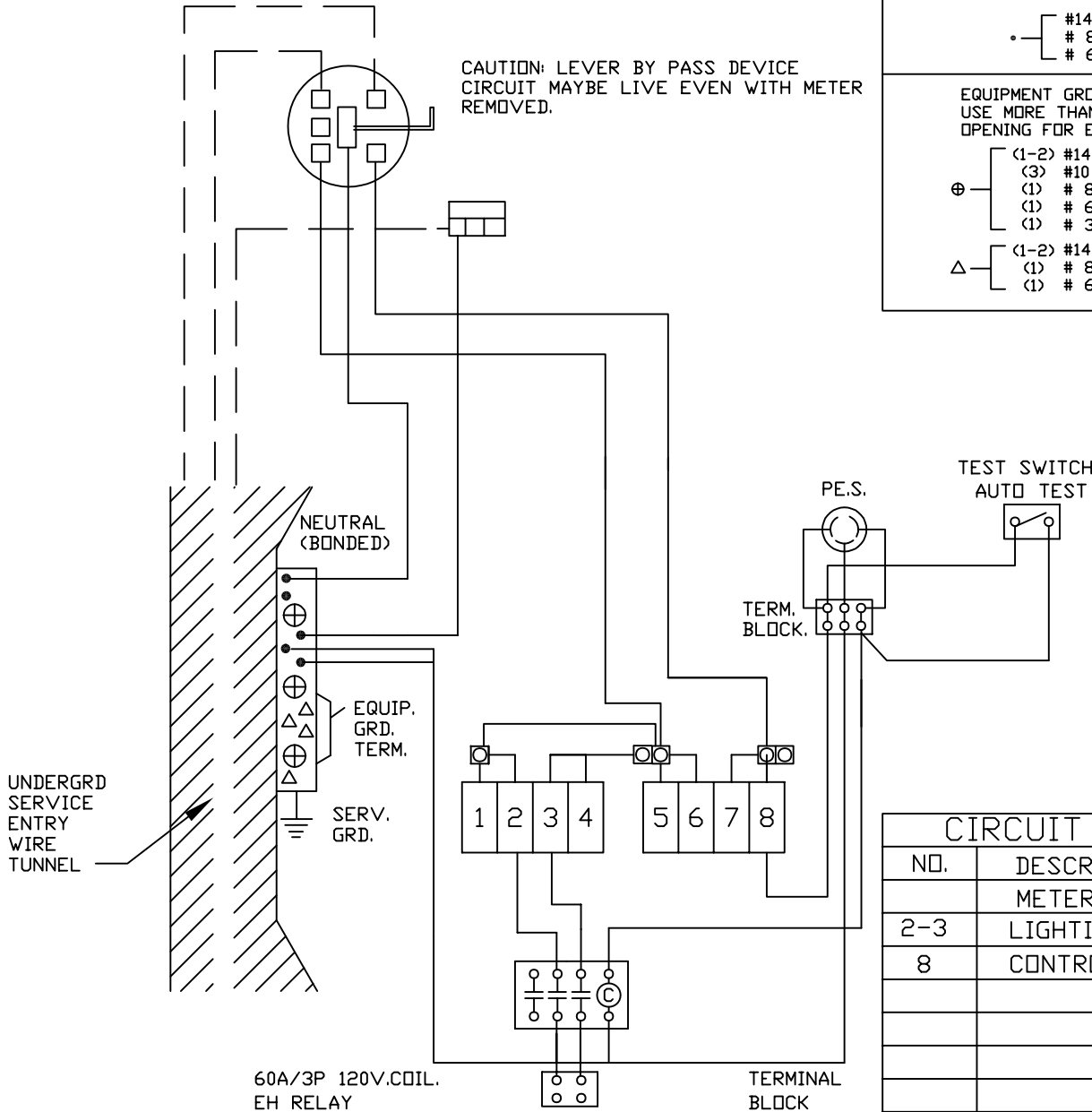


MET2-VLM-LTS-R-EH-LBP
 120/240 VAC. 1 PHASE 3 WIRE 100 AMPS.
 RAINPROOF TYPE 3R. ENCLOSURE

METER SOCKET 200 AMPS CONTINUOUS.
 RINGLESS

CAUTION: LEVER BY PASS DEVICE
 CIRCUIT MAYBE LIVE EVEN WITH METER
 REMOVED.



WIRE CONNECTORS EXCEPT
CIRCUIT BREAKERS:

SYMBOL	AL RANGE	CU RANGE	TORQUE:
⊠	12-10	14-1/0	50 LB IN
⊙	6-250MCM	6-250MCM	200 LB IN

WIRE CONNECTORS: USE AL/CU
CONDUCTORS

SYMBOL	RANGE	TORQUE: IN/LBS.
⊠	#6-250MCM	250
○	#14-10	32
	# 8	36
	# 6-4	41
	# 3-1/0	45
•	#14-10	18
	# 8	23
	# 6	32

EQUIPMENT GROUND TERMINATION:
 USE MORE THAN ONE CONDUCTOR PER
 OPENING FOR EQUIPMENT GRD. ONLY.

⊕	(1-2) #14-10	32
	(3) #10	50
	(1) # 8	36
	(1) # 6-4	41
	(1) # 3-1/0	45
△	(1-2) #14-10	18
	(1) # 8	23
	(1) # 6	32

CIRCUIT DIRECTORY

NO.	DESCRIPTION	AMP	POLE
	METERED		
2-3	LIGHTING	30	2
8	CONTROL-PE	15	1

INTERMEDIATE HANDLE TRIP POSITION:
 TO RESTORE POWER; TURN TO FULL OFF THEN ON.

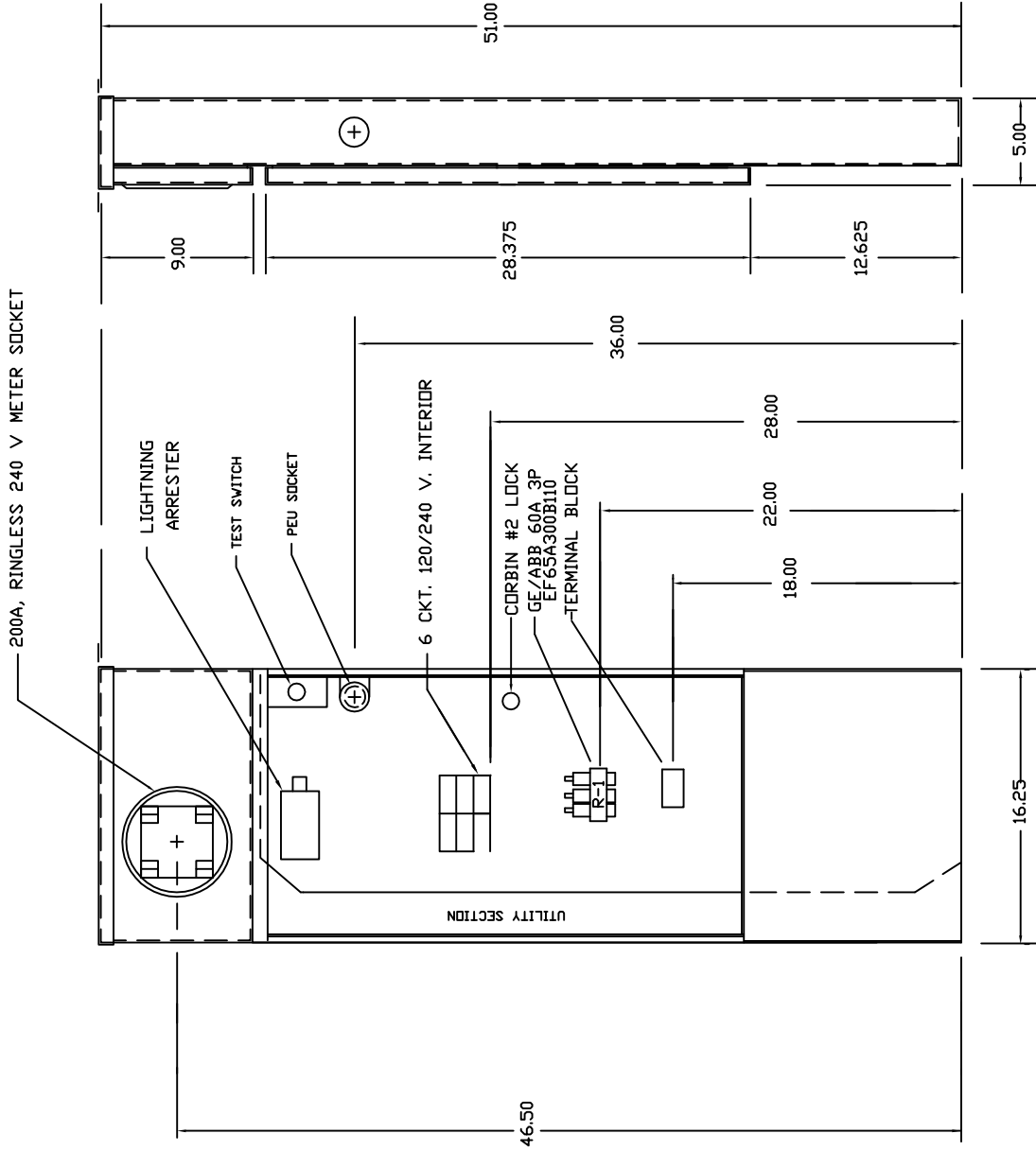
BONDED NEUTRAL, REMOVE BONDING MEANS FOR TEST PURPOSES ONLY. MET2-LTS-R-EH-LBP
 CIRCUIT BREAKERS 100 AMPS OR LESS: WESTINGHOUSE BR,BRH,BQ,BD,GFCB,GFCBH,HQP,QPH,QP-GF;
 CROUSE-HINDS MP,MH,MP-GF; G.E. THQL,THQL-GF.

SHORT CIRCUIT RATING: RMS SYMMETRICAL AMPS 10,000 AT 120/240 VAC. THE SHORT CIRCUIT
 RATING IS LIMITED TO THE LOWEST INTERRUPTING CAPACITY OF ANY DEVICE INSTALLED THEREIN
 REPLACEMENT BREAKERS MUST BE SAME TYPE AND RATING. FIELD INSTALLED CONDUCTORS SHOULD
 BE SIZED ON 60°C AMPACITY FOR 14-1 AWG. AND 75°C AMPACITY OVER 1 AWG PER TABLE
 310-16 OF NEC.

DWG. NO.

REV.

MET2-VLM-LTS-R-EH-LBP



<p>MYERS POWER PRODUCTS INC. 2950 E PHILADELPHIA ONTARIO, CA 91761</p>	<p>TOLERANCES, UNLESS OTHERWISE NOTED ANGLE ±.30 FRAC. DR .XX ± .030 .XXX ± .015</p>		REV	BY	DATE	REV	BY	DATE	DR. A.L.	TITLE	MATERIAL
	<p>AP</p>	<p>AP</p>	<p>AP</p>	<p>AP</p>	<p>AP</p>	<p>AP</p>	<p>AP</p>	<p>AP</p>	<p>AP</p>	<p>.125 ALUMINUM ME TYPE II FINISH NATURAL ALUMINUM</p>	<p>DWG. NO.</p>