

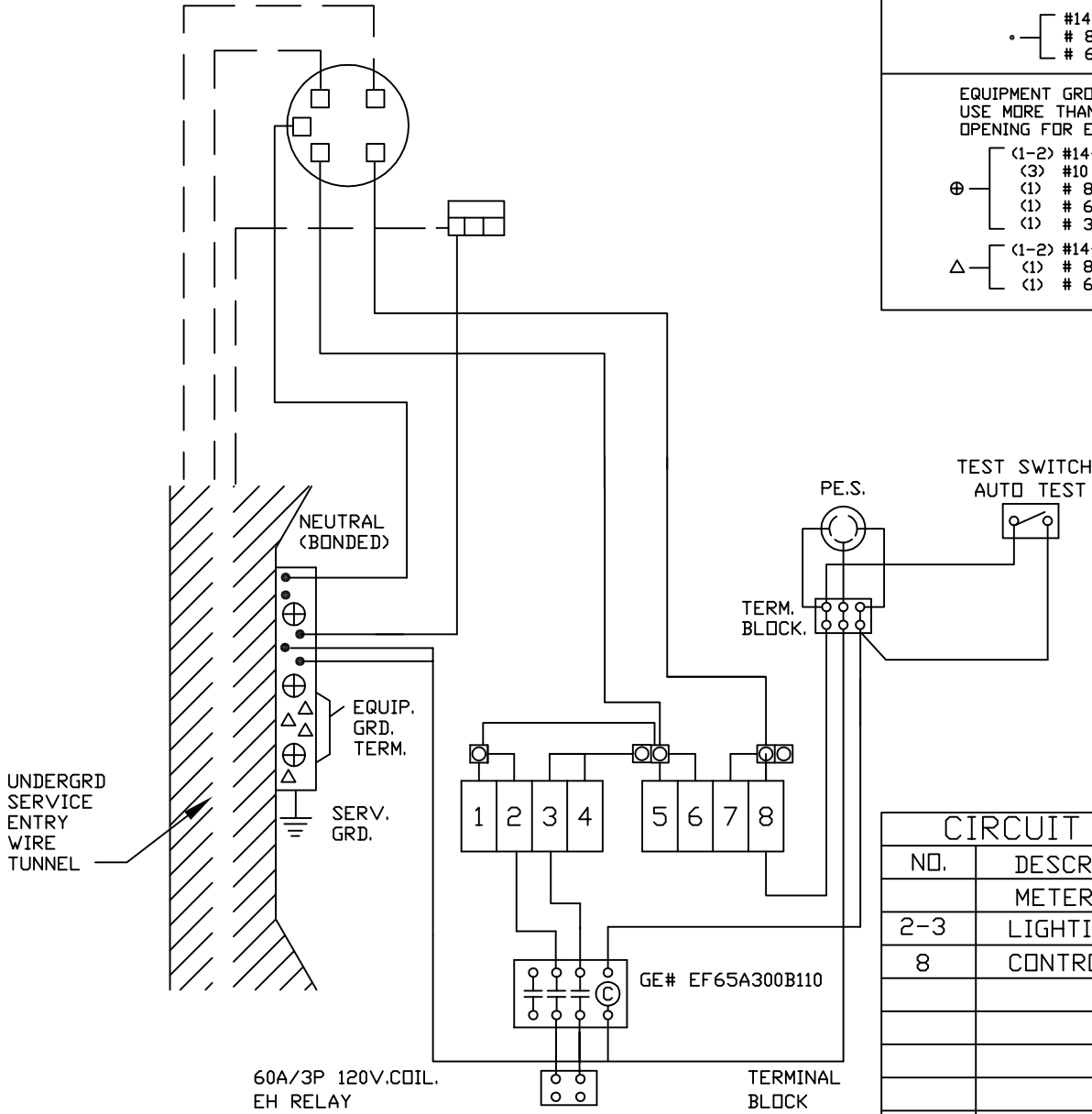
MYERS

POWER PRODUCTS INC.

2950 E PHILADELPHIA ONTARIO, CA 91761

MET2-VLM-LTS-R-EH
 120/240 VAC. 1 PHASE 3 WIRE 100 AMPS.
 RAINPROOF TYPE 3R. ENCLOSURE

METER SOCKET 200 AMPS CONTINUOUS.
 RINGLESS



WIRE CONNECTORS EXCEPT CIRCUIT BREAKERS:

SYMBOL	AL RANGE	CU RANGE	TORQUE:
⊠	12-10	14-1/0	50 LB IN
⊙	6-250MCM	6-250MCM	200 LB IN

WIRE CONNECTORS: USE AL/CU CONDUCTORS

SYMBOL	RANGE	TORQUE: IN/LBS.
⊠	#6-250MCM	250
○	#14-10	32
	# 8	36
	# 6-4	41
	# 3-1/0	45
•	#14-10	18
	# 8	23
	# 6	32

EQUIPMENT GROUND TERMINATION:
 USE MORE THAN ONE CONDUCTOR PER OPENING FOR EQUIPMENT GRD. ONLY.

⊕	(1-2) #14-10	32
	(3) #10	50
	(1) # 8	36
	(1) # 6-4	41
△	(1) # 3-1/0	45
	(1-2) #14-10	18
	(1) # 8	23
	(1) # 6	32

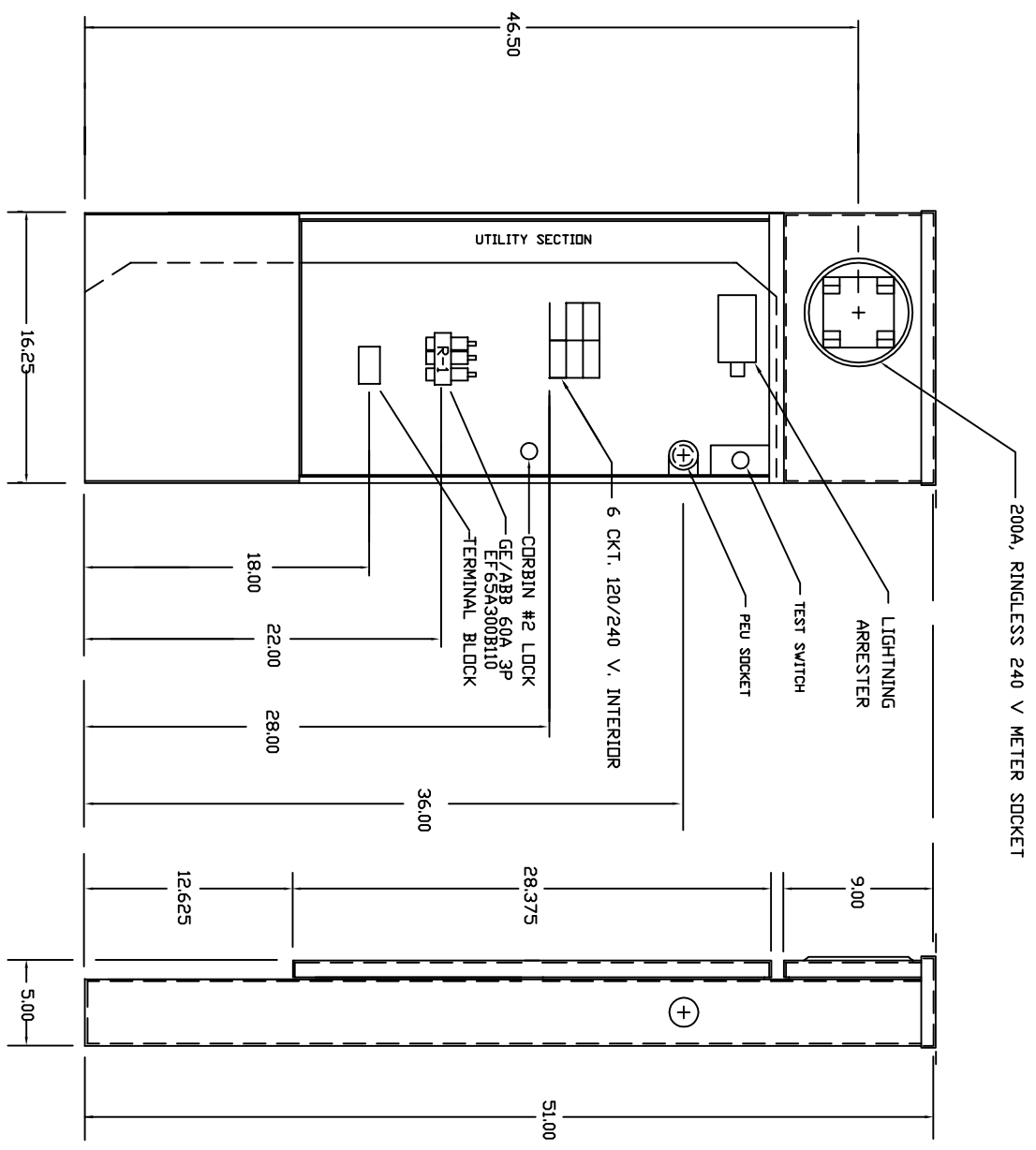
CIRCUIT DIRECTORY			
NO.	DESCRIPTION	AMP	POLE
	METERED		
2-3	LIGHTING	30	2
8	CONTROL-PE	15	1

INTERMEDIATE HANDLE TRIP POSITION:
 TO RESTORE POWER; TURN TO FULL OFF THEN ON.

BONDED NEUTRAL, REMOVE BONDING MEANS FOR TEST PURPOSES ONLY. MET2-LTS-R-EH
 CIRCUIT BREAKERS 100 AMPS OR LESS: WESTINGHOUSE BR,BRH,BQ,BD,GFCB,GFCBH,HQP,QPH,QP-GF;
 CROUSE-HINDS MP,MH,MP-GF; G.E. THQL,THQL-GF.

SHORT CIRCUIT RATING: RMS SYMMETRICAL AMPS 10,000 AT 120/240 VAC. THE SHORT CIRCUIT RATING IS LIMITED TO THE LOWEST INTERRUPTING CAPACITY OF ANY DEVICE INSTALLED THEREIN
 REPLACEMENT BREAKERS MUST BE SAME TYPE AND RATING. FIELD INSTALLED CONDUCTORS SHOULD BE SIZED ON 60°C AMPACITY FOR 14-1 AWG. AND 75°C AMPACITY OVER 1 AWG PER TABLE 310-16 OF NEC.

MET2-VLM-LTS-R-EH



<p>2950 E PHILADELPHIA ONTARIO, CA 91761</p> <p>MYERS</p> <p>POWER PRODUCTS, INC.</p>		<p>TOLERANCES, UNLESS OTHERWISE NOTED</p> <p>ANGLE ± 90</p> <p>FRAC. DR. .XX</p> <p>.XXX ± .015</p>		<p>REV.</p>	<p>BY</p>	<p>DATE</p>	<p>REV.</p>	<p>BY</p>	<p>DATE</p>	<p>DR. A.L.</p>	<p>TITLE</p>	<p>MATERIAL</p>
<p>DR. A.L.</p>											<p>.125 ALUMINUM ME TYPE II</p>	<p>DWG. NO.</p>
<p>FINISH</p>											<p>NATURAL ALUMINUM</p>	<p>FMET2LTSREH</p>
<p>REV.</p>											<p>REV.</p>	<p>REV.</p>