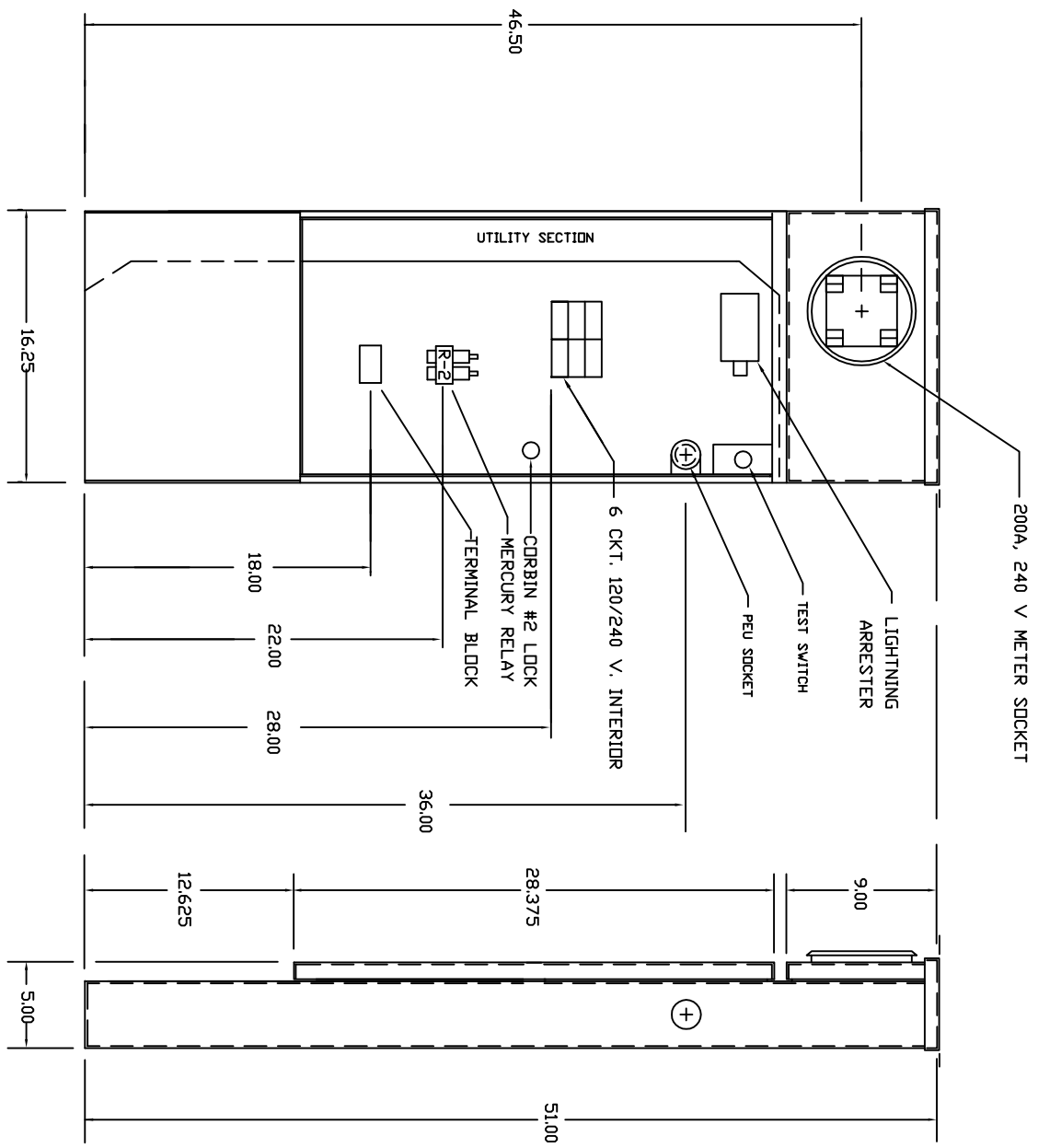


MET2-VLM-1C



<p>9603 JOHN ST SANTA FE SPRINGS, CA 90670</p>		<p>MYERS</p> <p>CUSTOM PRODUCTS INC.</p>		<p>TOLERANCES UNLESS OTHERWISE NOTED</p> <p>ANGLE ± 30</p> <p>FRACTION ± .005</p> <p>DECIMAL ± .015</p>		REV.	BY	DATE	REV.	BY	DATE	DR ALL.	TITLE	MATERIAL	REV.
												DR	.125 ALUMINUM ME TYPE II FINISH	DWG. NO. FMET2VLM1C	



CUSTOM PRODUCTS INC.

9603 JOHN STREET SANTA FE SPRINGS, CA 90670

MET2-VLM-1C

120/240 VAC, 1 PHASE 3 WIRE 100 AMPS.
RAINPROOF TYPE 3R, ENCLOSURE

WIRE CONNECTORS EXCEPT CIRCUIT BREAKERS:			
SYMBOL	AL RANGE	CU RANGE	TORQUE:
☐	12-10	14-1/0	50 LB IN
⊙	6-250MCM	6-250MCM	200 LB IN

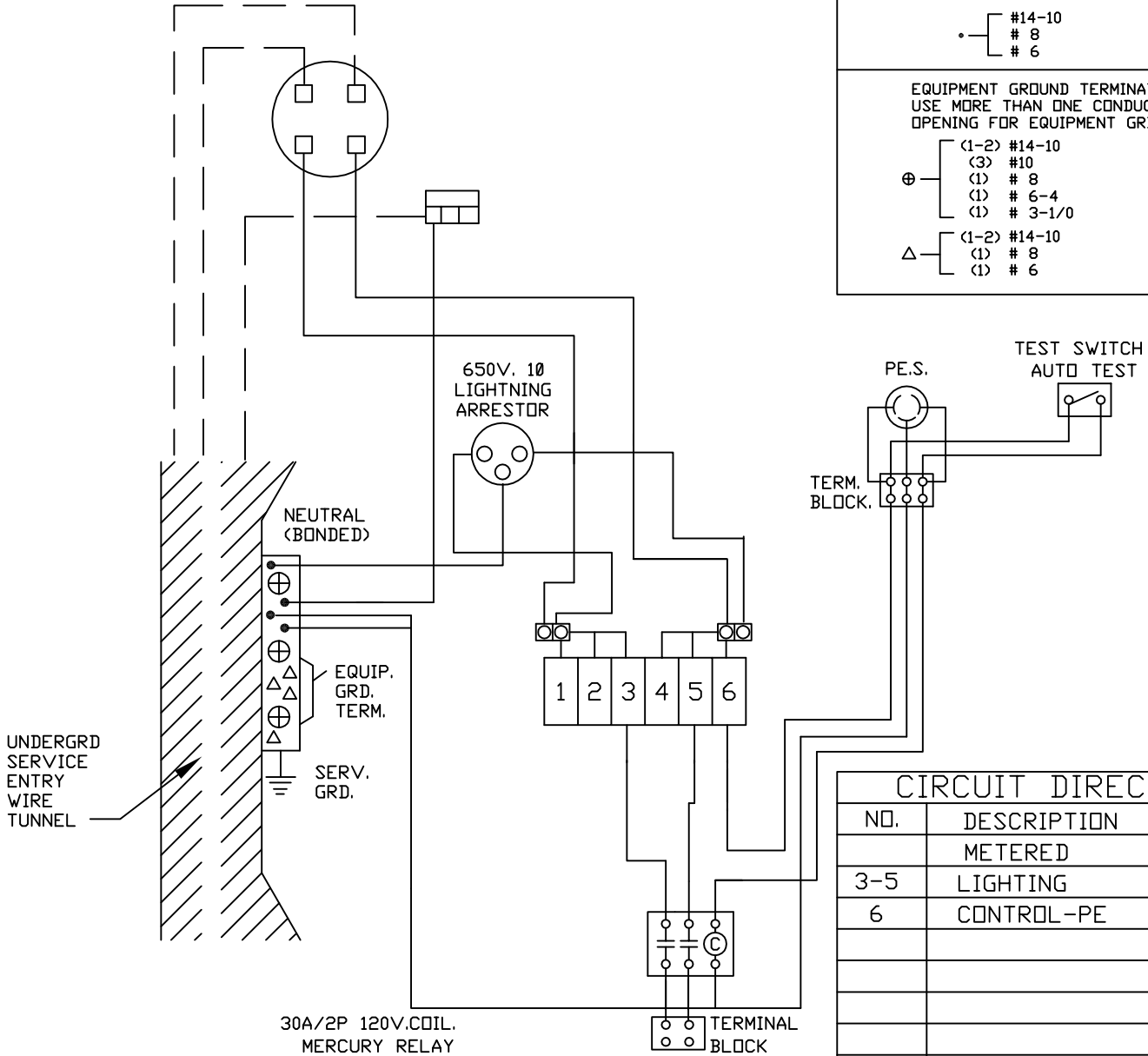
WIRE CONNECTORS: USE AL/CU CONDUCTORS

METER SOCKET 100 AMPS CONTINUOUS.

SYMBOL	RANGE	TORQUE: IN/LBS.
☒	#6-250MCM	250
○	#14-10	32
	# 8	36
	# 6-4	41
•	# 3-1/0	45
	#14-10	18
	# 8	23
	# 6	32

EQUIPMENT GROUND TERMINATION: USE MORE THAN ONE CONDUCTOR PER OPENING FOR EQUIPMENT GRD. ONLY.

⊕	(1-2) #14-10	32
	(3) #10	50
	(1) # 8	36
	(1) # 6-4	41
△	(1) # 3-1/0	45
	(1-2) #14-10	18
	(1) # 8	23
	(1) # 6	32



CIRCUIT DIRECTORY

NO.	DESCRIPTION	AMP	POLE
	METERED		
3-5	LIGHTING	30	2
6	CONTROL-PE	15	1

INTERMEDIATE HANDLE TRIP POSITION:
TO RESTORE POWER; TURN TO FULL OFF THEN ON.

BONDED NEUTRAL, REMOVE BONDING MEANS FOR TEST PURPOSES ONLY.
CIRCUIT BREAKERS 100 AMPS OR LESS: WESTINGHOUSE BR,BRH,BQ,BD,GFCB,GFCBH,HQP,QPH,QP-GF;
CROUSE-HINDS MP,MH,MP-GF; G.E. THQL,THQL-GF.

001081

SHORT CIRCUIT RATING: RMS SYMMETRICAL AMPS 10,000 AT 120/240 VAC. THE SHORT CIRCUIT RATING IS LIMITED TO THE LOWEST INTERRUPTING CAPACITY OF ANY DEVICE INSTALLED THEREIN REPLACEMENT BREAKERS MUST BE SAME TYPE AND RATING. FIELD INSTALLED CONDUCTORS SHOULD BE SIZED ON 60°C AMPACITY FOR 14-1 AWG. AND 75°C AMPACITY OVER 1 AWG PER TABLE 310-16 OF NEC.