

Waterproof Breakaway Streetlight Connector & Splice Insulating Kits

- Safe and easy installation in five minutes or less
- No special equipment necessary – requires only a knife, wire stripper and crimp tool
- Unique wire entry port, cut-off design accommodates industry’s widest range of insulation diameters
- Fewer parts than competitive brands for better waterproof protection
- Built-in break-away design eliminates de-energization of complete circuits
- Safely separates upon impact without breaking wires – eliminates potential danger and electrical shock (breakaway models)
- Unique 2-in-1 one-piece crimp barrel accommodates industry’s widest range of conductors (breakaway models)
- Spring-loaded contacts compensate for thermal expansion to maintain integrity of waterproof connection (breakaway models)



Application Guide

Examples of Several Kit Configurations

For Poles with Transformer Bases, Standard Bases and Junction Boxes

Underground Feed Phase to Phase

| Configurations | Comments |
|---|---|
| • D65 dual in-line for phases and two 84 or 84S kits for taps | Recommended |
| • Two 82 or 82S Y-Tap Kits for phases and taps | Cost-effective |
| • Two BTS4 B-CAP® Twist & Seal Wire Connectors | Non-breakaway, small gauge (8 AWG and above). See Wire Connector section. |

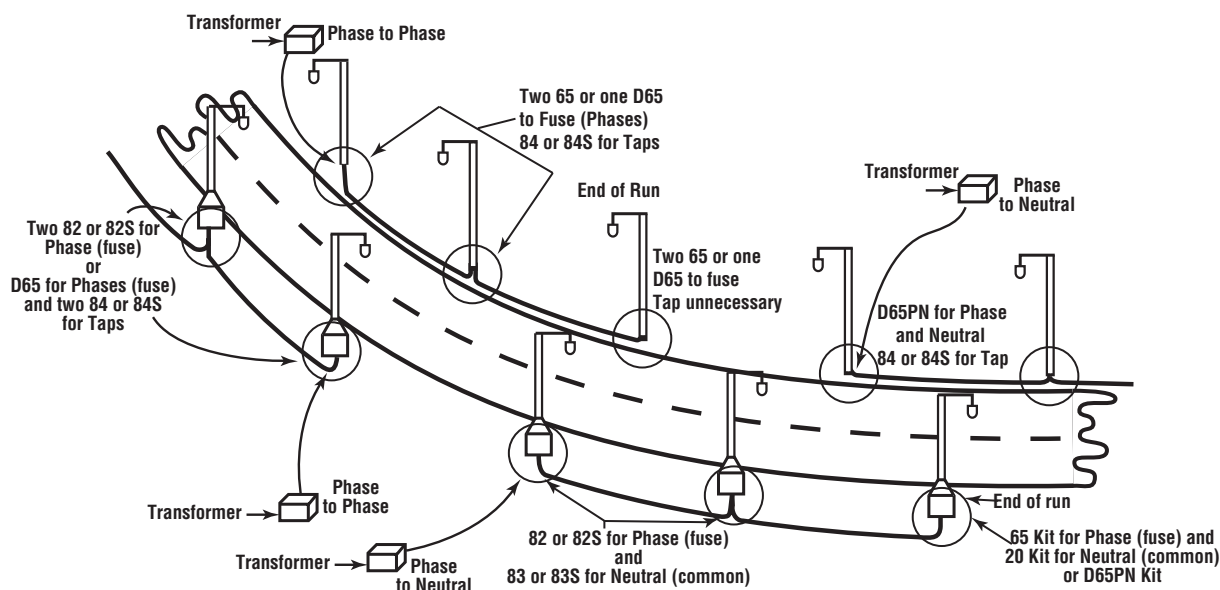
Underground Feed Phase to Neutral

| Configurations | Comments |
|---|---|
| • D65PN dual in-line for phase and neutral and Two 84 or 84S kits for tap | Recommended configuration |
| • One 82 or 82S Y-Tap Kit for phase and tap and one 83 or 83S Y-Tap Kit for neutral and tap | Cost-effective |
| • Two BTS4 B-CAP® Twist & Seal Wire Connectors | Non-breakaway, small gauge (8 AWG and above). See Wire Connector section. |

For Lights Mounted to Utility Poles, etc...

Overhead Feed

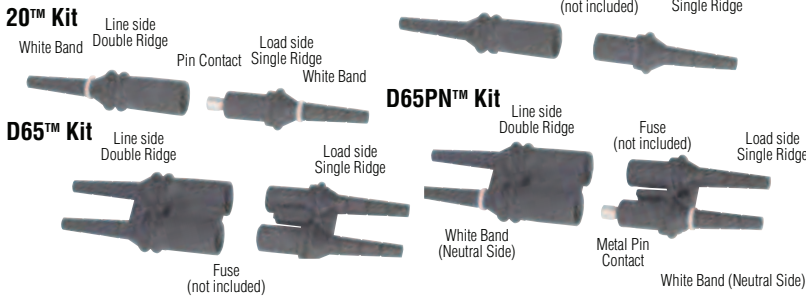
| | |
|--|---|
| • Two B-Tap® Insulation Piercing Connectors for phase and/or tap (for insulated conductors only) | Recommended configuration, see B-Tap® Insulation Piercing Connectors in this catalog. |
|--|---|



Ordering Information

Use the following chart and table to determine the correct part number by choosing model, line side, and load side ordering codes from the shaded columns. See example below, right (Page A-27).

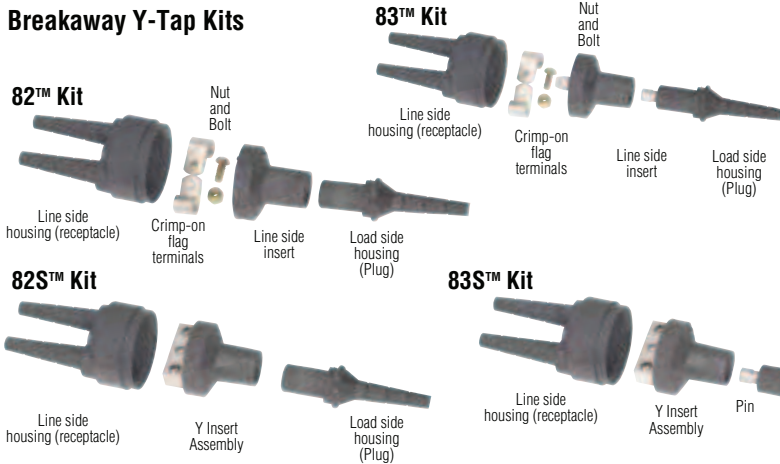
Breakaway In-Line Kits



MODEL

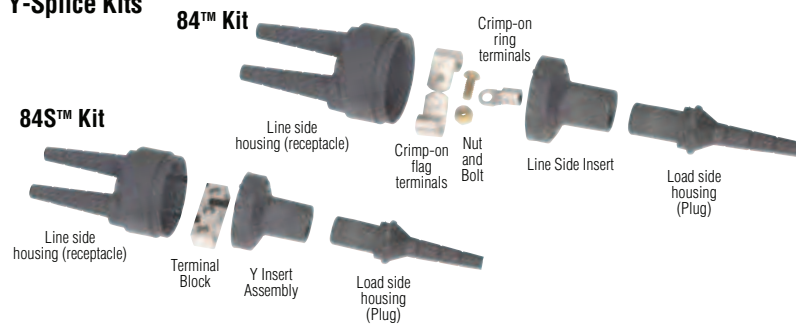
| Application | Electrical Rating | Ordering Code |
|--|---|---------------|
| In-Line Neutral Non-Fused Breakaway | 30 Amp 600 Volt | 20 - |
| In-Line Phase Fused Breakaway | 1/10-30 Amp 600 Volt | 65 - |
| Dual In-Line Phase Fused Breakaway | 1/10-30 Amp 600 Volt | D65 - |
| Dual In-Line Phase & Neutral Fused Breakaway | 1/10-30 Amp Phase 30 Amp Neutral 600 Volt | D65PN - |

Breakaway Y-Tap Kits



| Application | Electrical Rating | Ordering Code |
|---------------------------------------|---|---------------|
| Crimped Phase Fused Tap & Run | 1/10-30 Amp 600 Volt | 82 - |
| Crimp Neutral Non-Fused Tap & Run | 125 Amp Line 30 Amp Load 600 Volt | 83 - |
| Set Screw Phase Fused Tap & Run | 1/10-30 Amp 600 Volt | 82S - |
| Set Screw Neutral Non-Fused Tap & Run | 70 Amp Line 30 Amp Load 600 Volt | 83S - |

Y-Splice Kits



| Application | Electrical Rating | Ordering Code |
|----------------------------|---------------------|---------------|
| Crimp Splice Tap & Run | 150 Amp 600 Volt | 84 - |
| Set Screw Splice Tap & Run | 70 Amp 600 Volt | 84S - |

| Excerpts of the 1996 NEC Tables 5 & 5A Dimensions of Insulated Conductors and Fixture Wires | | | | | | | | | |
|--|--|-----------------|-------|-------------|--------------|-------------|--|-------|-------|
| Size (AWG) | Approx. Diameter in Inches for Insulation Types: | | | | | | Approx. Diameter in Inches for Compact AL with Insulation Types: | | |
| | RH | RHH, RHW-2, RHW | TW | THHW, THW-2 | THHN, THWN-2 | XHH, XHHW-2 | THW, THHW | THHN | XHHW |
| 14 | 0.163 | 0.193 | 0.133 | 0.163 | 0.111 | 0.133 | - | - | - |
| 12 | 0.182 | 0.212 | 0.152 | 0.182 | 0.130 | 0.152 | - | - | - |
| 10 | 0.236 | 0.236 | 0.176 | 0.206 | 0.164 | 0.176 | - | - | - |
| 8 | 0.326 | 0.326 | 0.236 | 0.266 | 0.216 | 0.236 | 0.255 | - | 0.224 |
| 6 | 0.364 | 0.364 | 0.304 | 0.304 | 0.254 | 0.274 | 0.290 | 0.240 | 0.260 |
| 4 | 0.412 | 0.412 | 0.352 | 0.352 | 0.324 | 0.322 | 0.335 | 0.305 | 0.305 |
| 3 | 0.440 | 0.440 | 0.380 | 0.380 | 0.352 | 0.350 | - | - | - |
| 2 | 0.472 | 0.472 | 0.412 | 0.412 | 0.384 | 0.382 | 0.390 | 0.360 | 0.360 |
| 1 | 0.582 | 0.582 | 0.492 | 0.492 | 0.446 | 0.442 | 0.465 | 0.415 | 0.415 |
| 1/0 | 0.622 | 0.622 | 0.532 | 0.532 | 0.486 | 0.482 | 0.500 | 0.450 | 0.450 |

| LINE SIDE | | | | LOAD SIDE | | | | |
|------------------------------------|--------------------------------|----------------|--------------------------|------------------------------------|----------------------------------|--------------------------------|----------------|--------------------------|
| Insulation Diameter Range (Inches) | Stranded* Conductor Size (AWG) | Type | Ordering Code (CHOOSE 1) | Insulation Diameter Range (Inches) | Equivalent Conductor (See Table) | Stranded* Conductor Size (AWG) | Type | Ordering Code (CHOOSE 1) |
| | 12-6 | Copper Crimp | U - | | | 12-6 | Copper Crimp | U |
| .120-.430 | 12-6 | Aluminum Crimp | UA - | .120-.430 | 1 | 12-6 | Aluminum Crimp | UA |
| | 4 or 2 | Copper Crimp | LC - | | | 4 or 2 | Copper Crimp | LC |
| | 4 or 2 | Aluminum Crimp | LA - | | | 4 or 2 | Aluminum Crimp | LA |

NOTE: It is not necessary to use the load side ordering code if it is the same as the line side code, i.e., a 65U-U is ordered as a 65U.

| Insulation Diameter Range (Inches) | Ordering Code (CHOOSE 1) | Stranded* Conductor Size (AWG) | Type | Ordering Code (CHOOSE 1) | Insulation Diameter Range (Inches) | Equivalent Conductor (See Table) | Stranded* Conductor Size (AWG) | Type | Ordering Code (CHOOSE 1) | |
|------------------------------------|--------------------------|--------------------------------|--------------|---|------------------------------------|----------------------------------|--------------------------------|----------------|--------------------------|---|
| .155-.430 | ADB | 10 | Copper Crimp | 6 - | .120-.430 | 1 | 12-6 | Copper Crimp | C | |
| | | 8 | Copper Crimp | 4 - | | | 12-6 | Aluminum Crimp | A | |
| | | 6 | Copper Crimp | 3 - | | | 4 or 2 | Copper Crimp | LC | |
| | | 4 | Copper Crimp | 2 - | | | | | | |
| .420-.785 | EAFB | 2 | Copper Crimp | 1 - | | | | | | |
| | | 1 | Copper Crimp | 0 - | | | | | | |
| | | 1/0 | Copper Crimp | 10 - | | | | | | |
| .155-.430 | | ADB | 10 | Terminal Block with Set Screws Copper or Alum. Conductors | 1 - | .120-.430 | 1 | 12-6 | Copper Crimp | C |
| | | | 8 | | 1 - | | | 12-6 | Aluminum Crimp | A |
| | 6 | | 1 - | | 4 or 2 | | | Copper Crimp | LC | |
| | 4 | | 1 - | | 4 or 2 | | | Aluminum Crimp | LA | |
| .420-.785 | EAFB | 2 | | 1 - | | | | | | |
| | | 1 | | 10 - | | | | | | |
| | | 1/0 | | 10 - | | | | | | |

| Insulation Diameter Range (Inches) | Ordering Code (CHOOSE 1) | Stranded* Conductor Size (AWG) | Type | Ordering Code (CHOOSE 1) | Insulation Diameter Range (Inches) | Equivalent Conductor (See Table) | Conductor Size (AWG) | Type | Ordering Code (CHOOSE 1) | |
|------------------------------------|--------------------------|--------------------------------|--|--------------------------|------------------------------------|----------------------------------|----------------------|--------------|--|-----|
| .155-.430 | ADB | 10 | Copper Crimp | 6 - | .120-.430 | 1 | 10 | Copper Crimp | 6 | |
| | | 8 | Copper Crimp | 4 - | | | 8 | Copper Crimp | 4 | |
| | | 6 | Copper Crimp | 3 - | | | 6 | Copper Crimp | 3 | |
| | | 4 | Copper Crimp | 2 - | | | 4 | Copper Crimp | 2 | |
| .420-.785 | EAFB | 2 | Copper Crimp | 1 - | | | 2 | Copper Crimp | 1 | |
| | | 1 | Copper Crimp | 0 - | | | 1 | Copper Crimp | 0 | |
| | | 1/0 | Copper Crimp | 10 - | | | | | | |
| .155-.430 | | ADB | 10 | Terminal Block | 1 - | .120-.430 | 1 | 10-2 | Terminal Block Copper or Aluminum Conductors | N/A |
| | | | 8 | | 1 - | | | | | |
| 1 - | 4 | | 1 - | | | | | | | |
| .420-.785 | EAFB | 2 | with Set Screws Copper or Alum. Conductors | 1 - | | | | | | |
| | | 1 | | 1 - | | | | | | |
| | | 1/0 | | 10 - | | | | | | |
| | | | | 10 - | | | | | | |

75°C / 600 Volts Max.



LR32565

NOTE:
Fused kits require a 13/32" x 1 1/2" fuse. **DO NOT USE GLASS OR INDICATING TYPES.**
Waterproof or direct burial wire is recommended. **THHN is NOT recommended.**

* For solid wire: 14-4 AWG, use codes U, UA, C, or A. 2 AWG, use codes LC or LA.

Example:

A Y-Tap Kit with set screws for a 2 AWG phase line side conductor with a diameter of .472" and a 10 AWG copper load side conductor is ordered as an 82S-EAFB1-C.