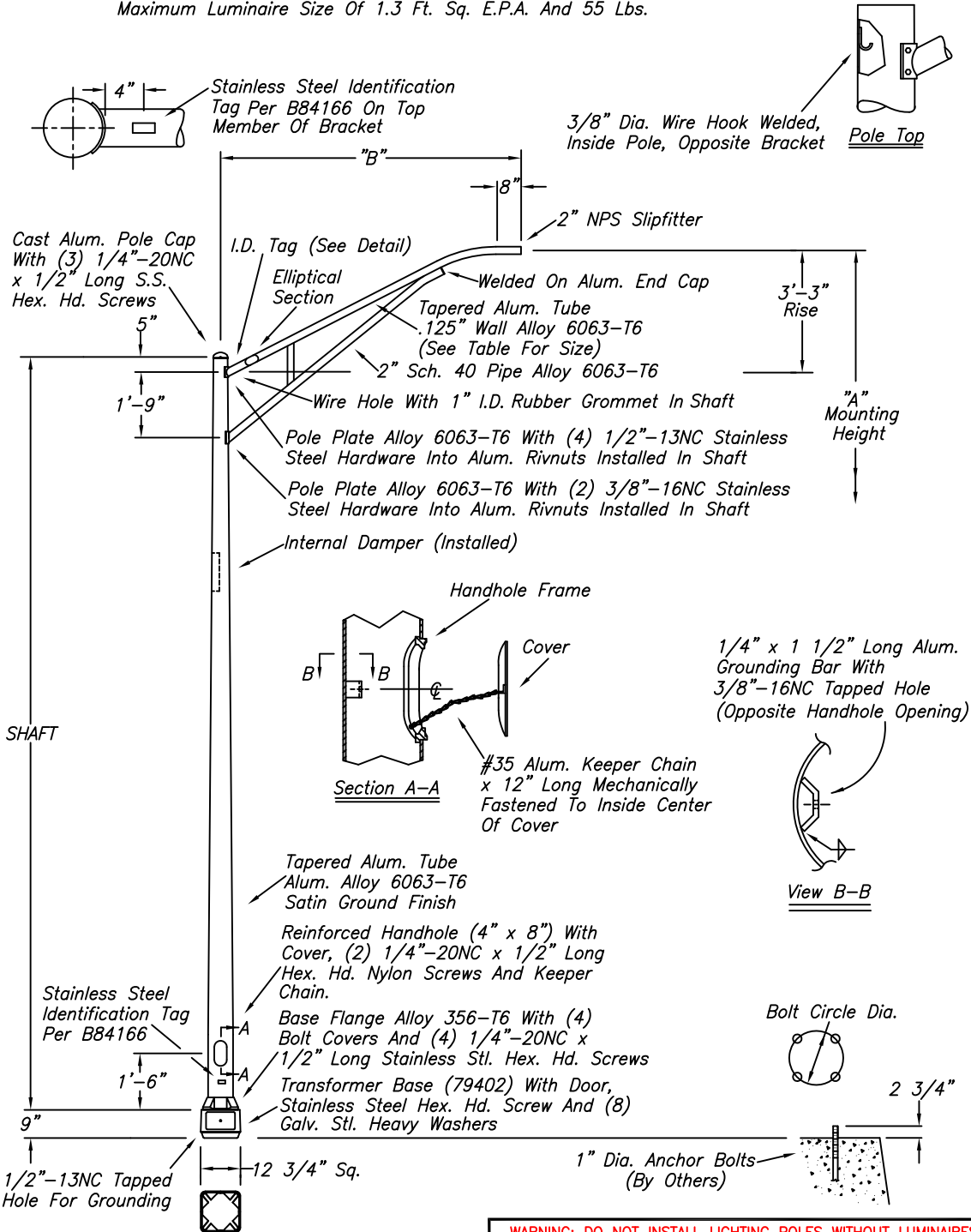


Qty	Item No.	A	B	Shaft Size	Anchor Bolt	Bolt Circle	Bracket	Arm Tube Size	Overland Park Designation
	79636-001	30'-0"	12'-0"	8" x 6" x .188" x 26'-5"	1"-8NC x 36" x 4"	11 1/2"	Single	3 1/2" O.D.	OP302
	79636-002	40'-0"	10'-0"	8" x 6" x .219" x 36'-5"	1"-8NC x 36" x 4"	11 1/2"	Single	3 1/2" O.D.	OP402
	79636-003	40'-0"	12'-0"	8" x 6" x .219" x 36'-5"	1"-8NC x 36" x 4"	11 1/2"	Single	3 1/2" O.D.	OP402
	79636-004	40'-0"	15'-0"	8" x 6" x .219" x 36'-5"	1"-8NC x 36" x 4"	11 1/2"	Single	4" O.D.	OP402
	79636-005	30'-0"	8'-0"	8" x 6" x .188" x 26'-5"	1"-8NC x 36" x 4"	11 1/2"	Twin @ 180°	3" O.D.	---
	79636-006	30'-0"	12'-0"	8" x 6" x .188" x 26'-5"	1"-8NC x 36" x 4"	11 1/2"	Twin @ 180°	3 1/2" O.D.	---
	79636-007	30'-0"	12'/8"	8" x 6" x .188" x 26'-5"	1"-8NC x 36" x 4"	11 1/2"	Twin @ 180°	*3 1/2" O.D.	---
	79636-008	30'-0"	8'-0"	8" x 6" x .188" x 26'-5"	1"-8NC x 36" x 4"	11 1/2"	Single	3" O.D.	---

* 3" O.D. Tube For 8' Bracket

Notes:

- (1) Package Loose Hardware In Small Bag (One Bag Per Pole)
- (2) Poles Meet 2013 AASHTO Specification For 90 MPH And A Maximum Luminaire Size Of 1.3 Ft. Sq. E.P.A. And 55 Lbs.



B79636

WARNING: DO NOT INSTALL LIGHTING POLES WITHOUT LUMINAIRES

NO.	REVISIONS	DATE
1	OP Designation & I.D. Tags Added	9/03
2	Wire Hook Added	10/04
3	Added -006 & -007	6/06
4	Added -008 (KDP)	7/07
5	Was 1994 AASHTO And 80mph	(kdp) 2/14

hapco
Abingdon, Va.

TITLE STREET LIGHTING POLES	
CUSTOMER OVERLAND PARK, KANSAS	
SCALE 32	DATE 06/05/00
BY JLW	DWG. NO.
CHK'D	B79636