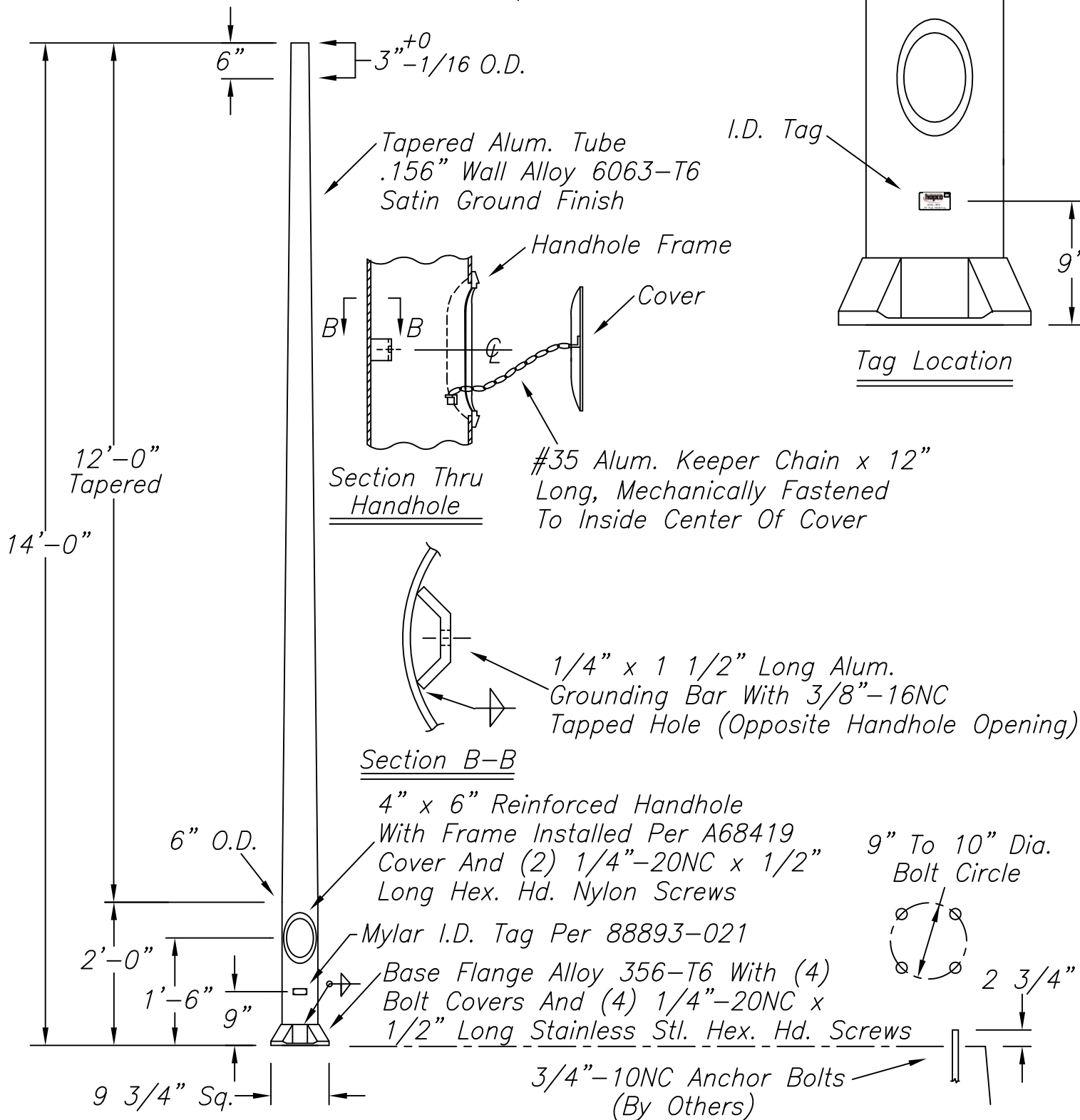


WARNING: DO NOT INSTALL POLE WITHOUT LUMINAIRE

Pole Meets 2013 AASHTO Specification For 90 MPH And A Maximum Luminaire Size Of 1.3 Ft. Sq. E.P.A. And 55 Lbs.



7.	I.D. Tag Added	9/03	8	Added Wire Hook	10/04	9	Added H.H. Welding Spec	12/06	10	Removed Wire Hook; Was S.S. Tag (KDP)	4/08
----	----------------	------	---	-----------------	-------	---	-------------------------	-------	----	---------------------------------------	------

NO.	REVISIONS	DATE
1.	Was 41740 Lug, Keeper Chain Location	10/91
2.	Chain Lgth. Added, Redrawn By LW	11/91
3.	General Revision	1/92
4.	Ground Bar Was 3/4" Long	2/92
5.	Chg'd Tolerance On Pole Top 3" Dim.	9/98
6.	Chain Relocated	7/02

hapco
Abingdon, Va.

TITLE 14' LIGHTING POLE	
CUSTOMER Overland Park, Kansas	
SCALE 24	DATE 3/23/92
BY LW	DWG. NO.
CHK'D	A66338