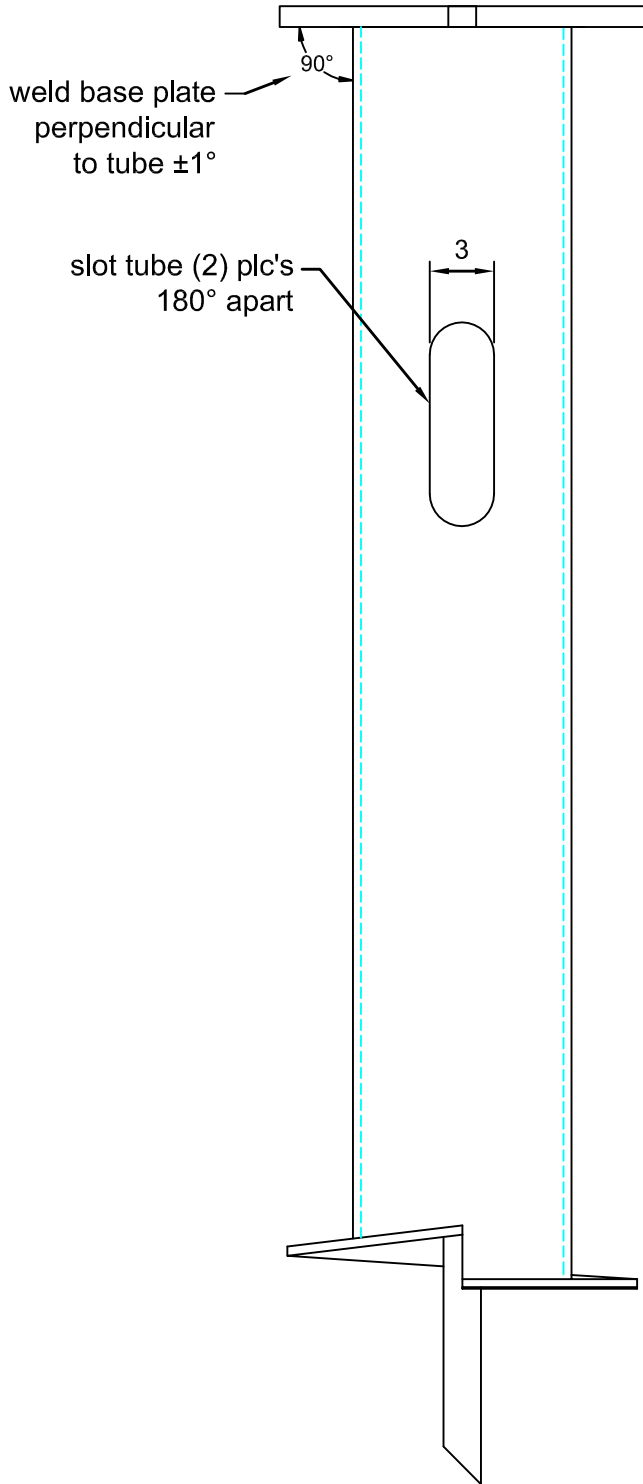
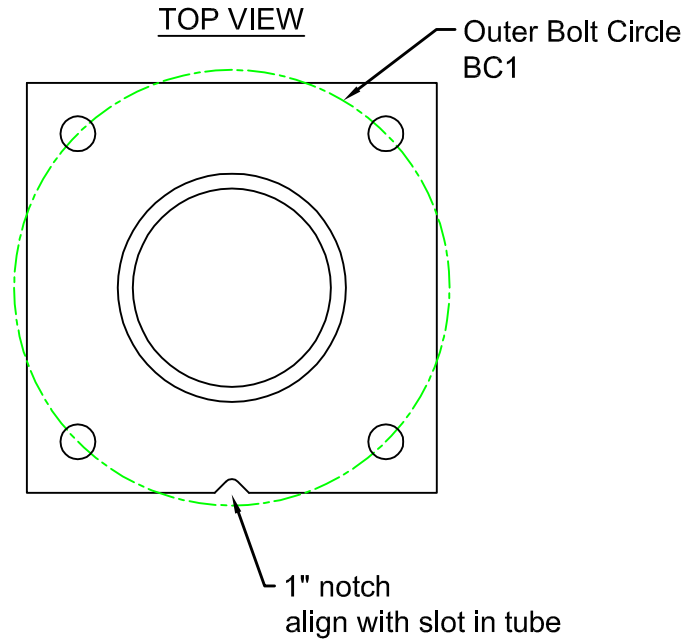


-Notes-

See attached for each size



- 1) All steel components meet or exceed the following standards:
 - a. Plate Material - ASTM A36
 - b. Tube Material - ASTM A252 (grade 1 & 2)
 - c. Hardware - A325 Heavy Hex
- 2) All steel components to be galvanized are thoroughly cleaned of contaminants prior to galvanization process. Galvanization is performed to the following standards (latest revision):
 - a. Hot Dip: ASTM A-123
 - b. Mechanical: ASTM B-695
 - c. Threaded Parts: ASTM A-153
- 3) All components are fabricated from previously unused material.
- 4) All sub component fabrication and finished part assemblies are performed under a certified quality assurance program.
- 5) Mill certifications must accompany all accepted steel shipments and are available upon request.
- 6) All welds are performed by certified AWS welders.
- 7) All dimensions are $\pm \frac{1}{8}$ " unless noted otherwise.
- 8) Where applicable, all stingers shall be concentrically placed within the anchor tube in order to aid in the installation.
- 9) All helical plates are fabricated from $\frac{3}{8}$ " steel and are formed to create a 3" pitch $\pm \frac{1}{4}$ " by a matching metal die.
- 10) All finished assemblies will be permanently marked with the fabricators part number on the top plate with $\frac{1}{2}$ " engraved identifier.



Earth Contact Products, L.L.C.
 15612 S. Keeler Terr.
 Olathe, KS. 66062
 Phone : (913) 393-0007 Fax : (913) 393-0008

| | | | |
|--|-----------|----------------|-------------------|
| Description : Helical Foundation Specifications | REVISIONS | | |
| | REV | DESCRIPTION | DATE |
| | | | |
| | | | |
| DRAWN: BPA | | DATE: 08/31/12 | |
| Part Number: | | | LPS-SPC-OP |