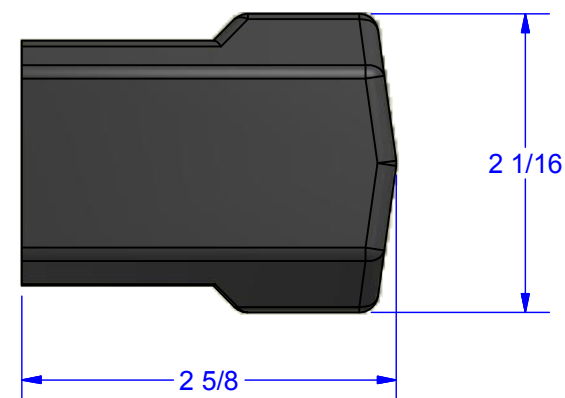
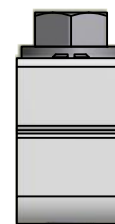
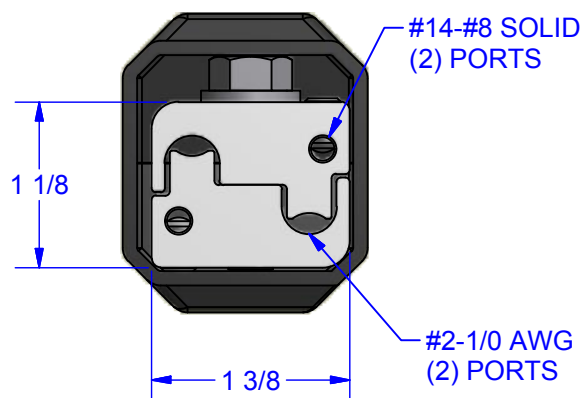
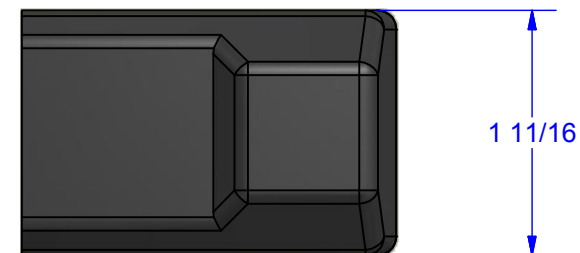
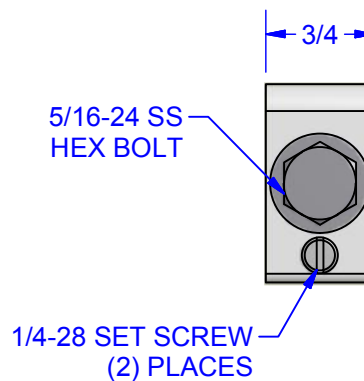
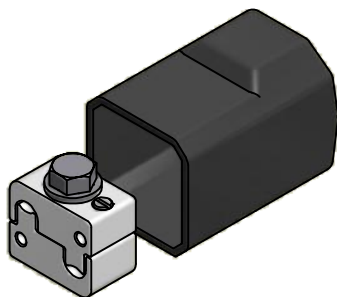


NOTES:

1. KIT TO INCLUDE FOUR BLACK PLASTISOL COVERED ALUMINUM CONNECTORS.
2. ALL CONNECTORS TO BE FULLY ASSEMBLED WITH A STAINLESS STEEL BOLT AND WASHER.
3. ALL TAP PORTS TO CONTAIN OXIDE INHIBITOR.
4. ALL SCREWS TO BE ZINC PLATED STEEL.
5. KIT TO BE PACKAGED IN ONE BAG.



1/0 MAIN - #8 TAP STREET LIGHT CONNECTOR

CUSTOMER APPROVAL

Please indicate approval of this design for your application by signing below and returning a copy to The Durham Company.

Date: _____
By: _____

TOLERANCES

(UNLESS OTHERWISE NOTED)

CUT LENGTHS & FRACTIONS ±.020
DRILLED HOLES ±.010
CENTER LINES ±.015
EXTRUDED SHAPES ± STANDARDS
ALL OTHER DIMENSIONS ±.015
FINAL ASSEMBLY DRAWING DIMENSIONS ARE NOMINAL, REFER TO INDIVIDUAL PART/SUB FOR ALLOWABLE CUMULATIVE TOLERANCE

DATE

10/25/13

BY

NG

The **DURHAM** Company
C-Line Electrical Components

DWG NO.

9205159

STREET LIGHT TAP

PART NUMBER KSL9211



www.durhamcompany.com

P.O. BOX 908
722 DURHAM ROAD
LEBANON, MO 65536

P.O. BOX 908
1601 WYOTA DRIVE
LEBANON, MO 65536

P.O. BOX 229
1435 N. INDUSTRIAL DR.
HOUSTON, MO 65483

THE DURHAM COMPANY

THIS DRAWING IS THE PROPERTY OF THE DURHAM COMPANY AND CONTAINS PROPRIETARY AND CONFIDENTIAL INFORMATION WHICH MUST NOT BE DUPLICATED, USED OR DISCLOSED OTHER THAN AS EXPRESSLY AUTHORIZED BY THE DURHAM COMPANY. SPECIFICATIONS SUBJECT TO CHANGE WITHOUT NOTICE.