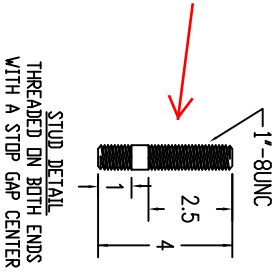
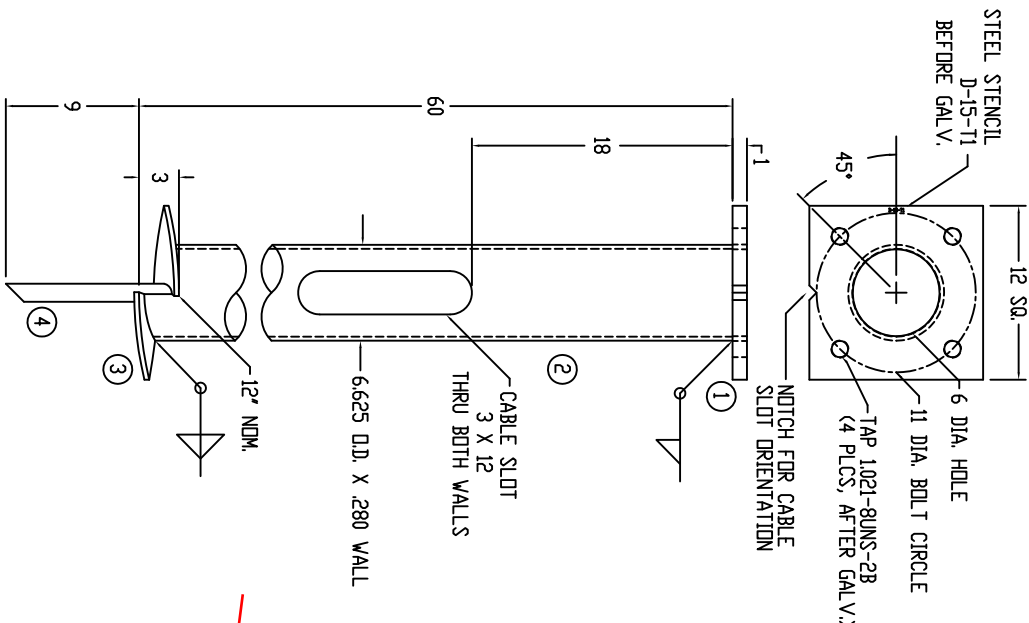


ITEM NO.	DESCRIPTION	QUANTITY				
		A	B	C	D	E
1.	TDP PLATE, 1 X 12 SQ. - 11	1				
2.	PIPE SHAFT, 6 SCH 40 X 60	1				
3.	HELIX, SIL, 3/8 X 12 X 1 1/4	1				
4.	STINGER, RBAR, 1 1/4 X 12	1				
5.	STUD, TAP END, 1 X 4	4				
6.	WASHER, PLAIN, 1	4				
7.	NUT, HEX, 1	4				



**NOTES**

1. MATERIAL : SHAFT - ASTM A252  
TDP PLATE - ASTM A36  
HELIX - ASTM A36  
PILOT POINT - ASTM A575  
STUD - AISI C1045
2. HOT DIP GALV. PER ASTM A153, AFTER FABRICATION.
3. ANCHOR SHALL BE SHIPPED WITH HARDWARE BAGGED AND SECURED TO PIPE SHAFT.
4. ANCHOR IS DESIGNED TO CONFORM TO THE CITY OF OVERLAND PARK SPECIFICATIONS FOR ANCHORS WITH A MAXIMUM TORQUE RATING OF 15,000 FT-LBS.

CATALOG NO.	PART
D-1202-0465	A

ALL UNTOLERANCED DIMENSIONS ARE FOR REFERENCE PURPOSES AND HAVE BEEN PREVIOUSLY DIMENSIONED AND TOLERANCED ON LOWER LEVEL DRAWINGS.

REV.	DATE	CHANGED FROM

ALL INFORMATION CONTAINED IN THIS DISCLOSURE WHETHER PATENTABLE OR OTHERWISE, COMPRISES PROPRIETARY INFORMATION OF DIXIE ELECTRICAL MANUFACTURING CO. AND ITS UNAUTHORIZED USE OR PUBLICATION WITHOUT THE EXPRESS CONSENT OF DIXIE ELECTRICAL MANUFACTURING CO. IS STRICTLY PROHIBITED.

**DIXIE ELECTRICAL**  
MANUFACTURING COMPANY  
P.O. BOX 170040  
BIRMINGHAM, ALABAMA 35217-0040

NAME	FOUNDATION ANCHOR,	SCALE	NONE	DR. NO.
	6 X 60	CHECKED	DATE	
		APPROVED	DATE	
		S.GARTON	07/16/03	P2727
				REV.