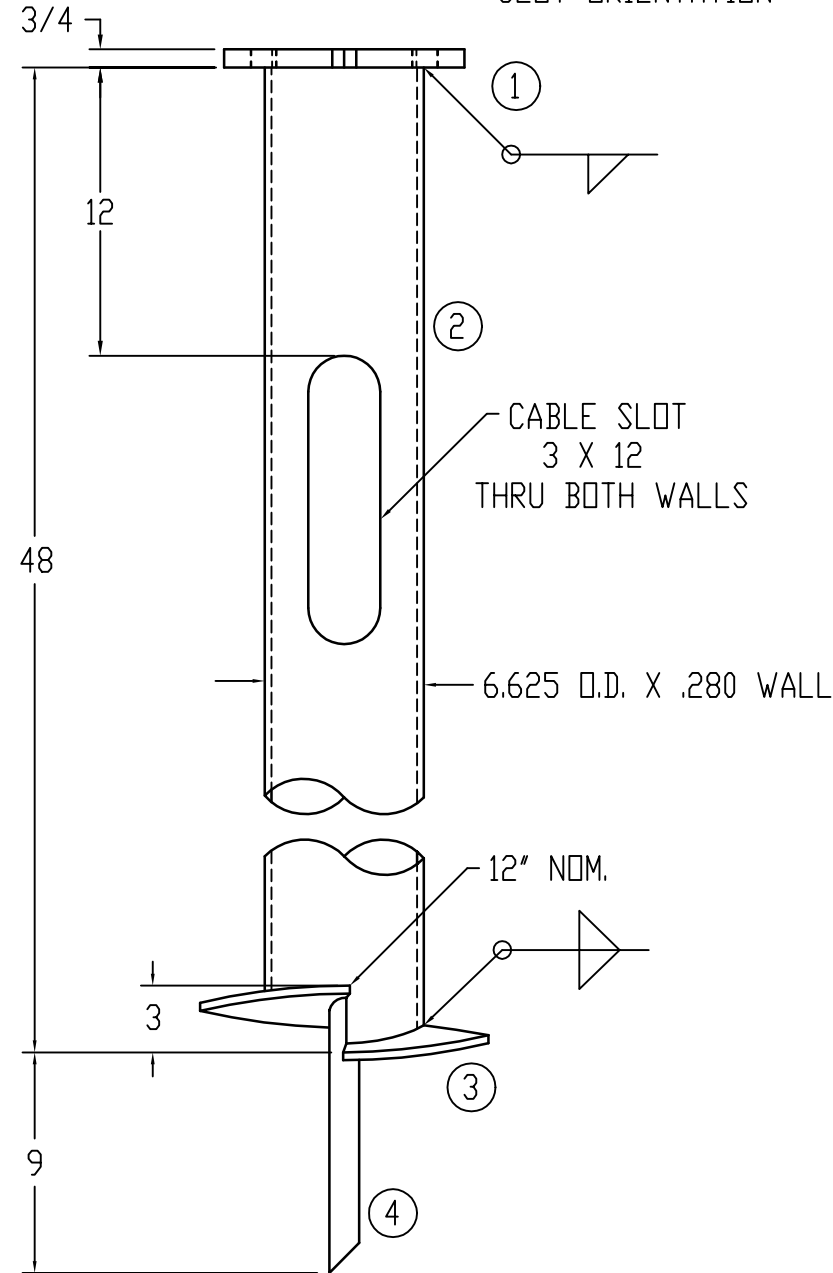
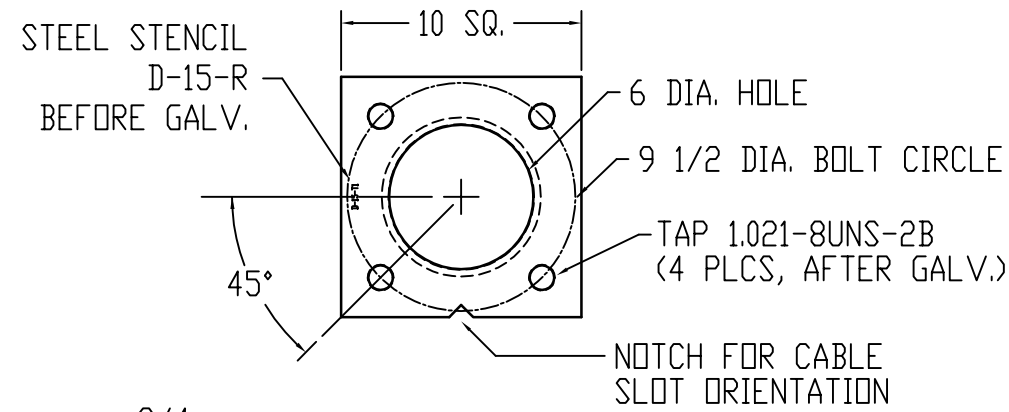


OUT. SALES: -
 IN. SALES: Meredith Nash
 PROJECT: -
 DATE: 15 Oct 03
 COMMENTS: -



ITEM NO.	DESCRIPTION	QUANTITY				
		A	B	C	D	E
1.	TOP PLATE, 3/4 X 10 SQ. - 9 1/2	1				
2.	PIPE SHAFT, 6 SCH 40 X 48	1				
3.	HELIX, SII, 3/8 X 12 X 1 1/4	1				
4.	STINGER, RBAR, 1 1/4 X 12	1				
5.	BOLT, HEX. HD, 1 X 2 1/2	4				
6.	WASHER, PLAIN, 1	4				
7.	WASHER, SPLIT LOCK, 1	4				

NOTES

- MATERIAL : SHAFT - ASTM A252
 TOP PLATE - ASTM A36
 HELIX - ASTM A36
 PILOT POINT - ASTM A575
 STUD - AISI C1045
- HOT DIP GALV. PER ASTM A153, AFTER FABRICATION.
- ANCHOR SHALL BE SHIPPED WITH HARDWARE BAGGED AND SECURED TO PIPE SHAFT.
- ANCHOR IS DESIGNED TO CONFORM TO THE CITY OF OVERLAND PARK SPECIFICATIONS FOR ANCHORS WITH A MAXIMUM TORQUE RATING OF 15,000 FT-LBS.

CATALOG NO.	PART
D-1202-0029	A

ALL UNTOLERANCED DIMENSIONS ARE FOR REFERENCE PURPOSES AND HAVE BEEN PREVIOUSLY DIMENSIONED AND TOLERANCED ON LOWER LEVEL DRAWINGS.

E	CHG'D ITEMS 5 & 7 (JPH)	16JULY03
D	CHG'D HELIX TO A36	20SEP95
C	CHG'D LOCATION OF STENCIL	1-9-92
B	ADDED STEEL STENCIL	7-16-91
REV.	CHANGED FROM	DATE

ALL INFORMATION CONTAINED IN THIS DISCLOSURE WHETHER PATENTABLE OR OTHERWISE COMPRISES PROPRIETARY INFORMATION OF DIXIE ELECTRICAL MANUFACTURING CO. AND ITS UNAUTHORIZED USE OR PUBLICATION WITHOUT THE EXPRESS CONSENT OF DIXIE ELECTRICAL MANUFACTURING CO. IS STRICTLY PROHIBITED.

DIXIE ELECTRICAL
 MANUFACTURING COMPANY
 P.O. BOX 170040
 BIRMINGHAM, ALABAMA 35217-0040

NAME _____
 FOUNDATION ANCHOR,
 6" X 48", TYPE R
 CITY OF OVERLAND PARK

DRAWN
 K.OSVATH
 CHECKED
 SCG
 APPROVED
 S.GARTON

SCALE
 NONE
 DATE
 DATE
 07/16/03

DX NO.
 P1066
 REV.
 E