

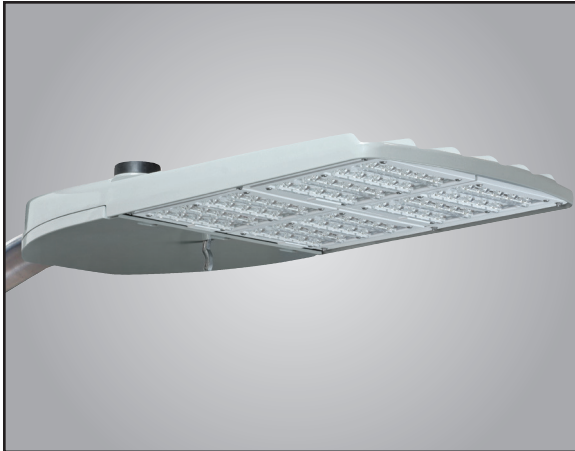


Consistent with LEED® goals & Green Globes™ criteria for light pollution reduction

Autobahn Series ATB2 Roadway Lighting

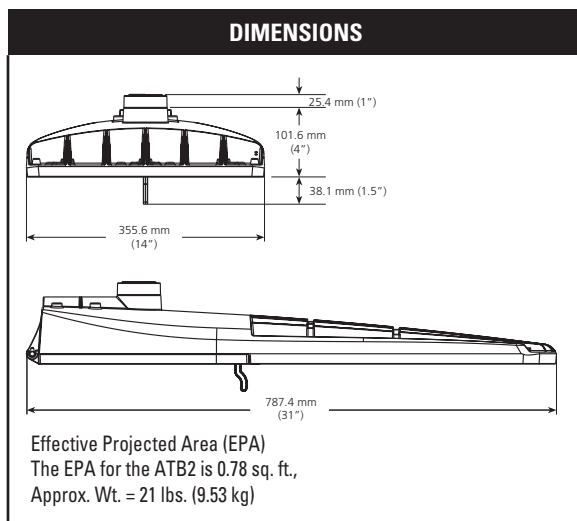
OPKS - ATB2 60BLEDE70 MVOLT R2 IL P7 SH RFD210943 (GRAY-B)

PRODUCT OVERVIEW



Applications:

- Roadways
- Off ramps
- Residential streets
- Parking lots



Features:

OPTICAL

Same Light: Performance is comparable to 250-400W HPS roadway luminaires.

White Light: Correlated color temperature - standard 4000K, 70 CRI minimum or optional 5000K, 70 CRI minimum.

Unique IP66 rated LED light engines provided 0% uplight and restrict backlight to within sidewalk depth, providing optimal application coverage and optimal pole spacing.

Available in Type II, III, IV, & V roadway distributions.

ELECTRICAL

Expected Life: LED light engines are rated >100,000 hours at 25°C, L70.

Electronic driver has an expected life of 100,000 hours at a 25°C ambient.

Lower Energy: Saves an average of 40-60% over comparable HPS platforms.

Robust Surge Protection: Three different surge protection options provide a minimum of IEEE/ANSI C62.41 Category C (10kV/5kA) protection. 20kV/10kA protection is also available.

MECHANICAL

Easy to Maintain: Includes standard AEL lineman-friendly features such as tool-less entry, 3 station terminal block and quick disconnects. Bubble level located inside the electrical compartment for easy leveling at installation.

Rugged die-cast aluminum housing is polyester powder-coated for durability and corrosion resistance. Rigorous five-stage pre-treating and painting process yields a finish that achieves a scribe creepage rating of 8 (per ASTM D1654) after over 1000 hours exposure to salt fog chamber (operated per ASTM B117) Optional Enhanced Corrosion Resistant finish (CR) increases the salt spray exposure to 5000 hours.

Four-bolt mast arm mount is adjustable for arms from 1-1/4" to 2" (1-5/8" to 2-3/8" O.D.) diameter and provides a 3G vibration rating per ANSI C136.

Wildlife shield is cast into the housing (not a separate piece).

CONTROLS

NEMA 3 Pin photocontrol receptacle is standard, with the Acuity designed ANSI 5 Pin and 7 Pin receptacles optionally available.

Premium solid state locking sale photocontrol - PCSS (10 year rated life).

Extreme long life sold state locking style photocontrol - PCLL (20 year rated life).

Mult-level dimming available to provide scheduled dimming as specified by the customer.

Optional onboard Adjustable Output module allows the light output and input wattage to be modified to meet site specific requirements, and can also allow a single fixture to be flexibly applied in many different applications.

STANDARDS

DesignLights Consortium® (DLC) qualified product. Not all versions of this product may be DLC qualified. Please check the DLC Qualified Products List at www.designlights.org/QPL to confirm which versions are qualified.

Rated for -40°C to 40°C ambient.

CSA Certified to U.S. and Canadian standards

Complies with ANSI: C136.2, C136.10, C136.14, C136.31, C136.15, C136.37

Note: Specifications subject to change without notice.

Autobahn Series – AEL_0109_ATB2



Autobahn Series ATB2

Roadway Lighting

ORDERING INFORMATION

Example: ATB2 40LEDE70 MVOLT R2

| ATB2 | 60BLEDE70 | MVOLT | R2 |
|----------------------------------|--|---|--|
| Series | Performance Packages | Voltage | Optics |
| ATB2 Autobahn LED Roadway | 40BLEDE70 40B Chips, 700mA Driver 40BLEDE10 40B Chips, 1050mA Driver 40BLEDE13 40B Chips, 1300mA Driver 40BLEDE15¹ 40B Chips, 1500mA Driver 60BLEDE70 60B Chips, 700mA Driver 60BLEDE85 60B Chips, 850mA Driver 60BLEDE10 60B Chips, 1050mA Driver 60BLEDE13 60B Chips, 1300mA Driver 80BLEDE70 80B Chips, 700mA Driver 80BLEDE85 80B Chips, 850mA Driver 80BLEDE10 80B Chips, 1050mA Driver | MVOLT Multi-volt, 120-277V 347 347V 480 480V | R2 Roadway Type II R3 Roadway Type III R4 Roadway Type IV R5 Roadway Type V |

IL - P7 - SH - RFD210943 - "B" LABEL - GRAY - RFWD #6463 - 10 YEAR WARRANTY

Options

Color Temperature (CCT)

(Blank) 4000K CCT, 70 CRI Min. (Standard)
5K 5000K CCT, 70 CRI Min.

Paint

(Blank) Gray (Standard)
BK Black
BZ Bronze
DDB Dark Bronze
GI Graphite
WH White

Surge Protection

Blank Standard 10kV/5kA SPD
20 20kV/10KA SPD
MP¹ MOV Pack
IL¹ SPD with Indicator Light

Terminal Block

(Blank) Terminal Block (Standard)
T2 Wired to L1 & L2 Positions

Misc.

BL External Bubble Level
CR Enhanced Corrosion Resistant Finish
HS House-Side Shield
NL Nema Label
XL Not CSA Certified
HK Hingekeepers

Controls

(Blank) 3 Pin NEMA Photocontrol Receptacle (Standard)
P5² 5 Pin Photocontrol Receptacle (Dimmable Driver Included)
P7² 7 Pin Photocontrol Receptacle (Dimmable Driver Included)
NR No Photocontrol Receptacle
AO² Field Adjustable Output
DM 0V-10V Dimmable Driver (Controls by others)
ML^{3,4} Multi-Level Dimming
PCSS¹ Solid State Lighting Photocontrol (120-277V)
PCLL Solid State Long Life Photocontrol
SH Shorting Cap

Packaging

(Blank) Single Unit (Standard)
JP Job Pack (24/Pallet)

Notes

1. Not available in 347 or 480V.
2. Not available with DM or ML options.
3. Not available with AO, DM, P5 or P7 options.
4. Dimming schedule and light level information required from the customer in order to configure product. Contact Infrastructure Technical Support to proceed.



AEL Headquarters, 3825 Columbus Road, Granville, OH 43023
 www.americanelectricalighting.com
 © 2014-2016 Acuity Brands Lighting, Inc. All Rights Reserved. 03/29/16

Warranty Five-year limited warranty. Complete warranty terms located at: www.acuitybrands.com/CustomerResources/Terms_and_conditions.aspx
 Actual performance may differ as a result of end-user environment and application. All values are design or typical values, measured under laboratory conditions at 25 °C. Specifications subject to change without notice.

Please contact your sales representative for the latest product information.

Autobahn Series ATB2

Roadway Lighting

PERFORMANCE PACKAGE

| Performance Package | Drive Current (mA) | Input Watts | Optic | 4000K CCT | | LLD @ 25°C | |
|---------------------|--------------------|-------------|-------|------------------|----------------|------------|------------|
| | | | | Delivered Lumens | Efficacy (LPW) | 50k Hours | 100k Hours |
| 40B | 700 | 91 | R2 | 11266 | 124 | 0.98 | 0.96 |
| | 1000 | 138 | | 15685 | 114 | 0.95 | 0.90 |
| | 1300 | 177 | | 18277 | 103 | 0.94 | 0.88 |
| | 1500 | 204 | | 20590 | 101 | 0.91 | 0.85 |
| | 700 | 91 | R3 | 11160 | 123 | 0.98 | 0.96 |
| | 1000 | 138 | | 15520 | 112 | 0.95 | 0.90 |
| | 1300 | 177 | | 18050 | 102 | 0.94 | 0.88 |
| | 1500 | 204 | | 20036 | 98 | 0.91 | 0.85 |
| | 700 | 91 | R4 | 10775 | 118 | 0.98 | 0.96 |
| | 1000 | 138 | | 15015 | 109 | 0.95 | 0.90 |
| | 1300 | 177 | | 17341 | 98 | 0.94 | 0.88 |
| | 1500 | 204 | | 19458 | 95 | 0.91 | 0.85 |
| | 700 | 91 | R5 | 12097 | 133 | 0.98 | 0.96 |
| | 1000 | 138 | | 16729 | 121 | 0.95 | 0.90 |
| | 1300 | 177 | | 19564 | 111 | 0.94 | 0.88 |
| | 1500 | 204 | | 21678 | 106 | 0.91 | 0.85 |
| 60B | 700 | 133 | R2 | 16986 | 128 | 0.98 | 0.96 |
| | 850 | 173 | | 19966 | 115 | 0.95 | 0.90 |
| | 1000 | 208 | | 23710 | 114 | 0.95 | 0.90 |
| | 1300 | 260 | | 27308 | 105 | 0.94 | 0.88 |
| | 700 | 133 | R3 | 17128 | 129 | 0.98 | 0.96 |
| | 850 | 173 | | 20105 | 116 | 0.95 | 0.90 |
| | 1000 | 208 | | 23250 | 112 | 0.95 | 0.90 |
| | 1300 | 260 | | 27477 | 106 | 0.94 | 0.88 |
| | 700 | 133 | R4 | 16516 | 124 | 0.98 | 0.96 |
| | 850 | 173 | | 19429 | 112 | 0.95 | 0.90 |
| | 1000 | 208 | | 22718 | 109 | 0.95 | 0.90 |
| | 1300 | 260 | | 26400 | 102 | 0.94 | 0.88 |
| | 700 | 133 | R5 | 17882 | 134 | 0.98 | 0.96 |
| | 850 | 173 | | 21000 | 121 | 0.95 | 0.90 |
| | 1000 | 208 | | 24673 | 119 | 0.95 | 0.90 |
| | 1300 | 260 | | 28838 | 111 | 0.94 | 0.88 |
| 80B | 700 | 180 | R2 | 22528 | 125 | 0.98 | 0.96 |
| | 850 | 224 | | 26394 | 118 | 0.95 | 0.90 |
| | 1000 | 274 | | 30998 | 113 | 0.95 | 0.90 |
| | 700 | 180 | | 22127 | 123 | 0.98 | 0.96 |
| | 850 | 224 | R3 | 25955 | 116 | 0.95 | 0.90 |
| | 1000 | 274 | | 30491 | 111 | 0.95 | 0.90 |
| | 700 | 180 | | 21701 | 121 | 0.98 | 0.96 |
| | 850 | 224 | | 25350 | 113 | 0.95 | 0.90 |
| | 1000 | 274 | R4 | 29567 | 108 | 0.95 | 0.90 |
| | 700 | 180 | | 23799 | 132 | 0.98 | 0.96 |
| | 850 | 224 | | 27851 | 124 | 0.95 | 0.90 |
| | 1000 | 274 | | 32391 | 118 | 0.95 | 0.90 |

Note: Information shown above is based on nominal system data. Individual fixture performance may vary. Specifications subject to change without notice.

| ATB2 LLD Multiplier | 15°C | 20°C | 25°C | 30°C | 35°C | 40°C |
|---------------------|------|------|------|------|------|------|
| | 1.02 | 1.01 | 1 | 0.99 | 0.97 | 0.96 |

To calculate the LLD for a temperature other than 25°C, multiply the LLD @ 25°C (shown in the performance package table) by the LLD multiplier for the selected temperature.



AEL Headquarters, 3825 Columbus Road, Granville, OH 43023
 www.americanelectricalighting.com
 © 2014-2016 Acuity Brands Lighting, Inc. All Rights Reserved. 03/29/16

Warranty Five-year limited warranty. Complete warranty terms located at: www.acuitybrands.com/CustomResources/Terms_and_conditions.aspx
 Actual performance may differ as a result of end-user environment and application. All values are design or typical values, measured under laboratory conditions at 25 °C. Specifications subject to change without notice.

Please contact your sales representative for the latest product information.