

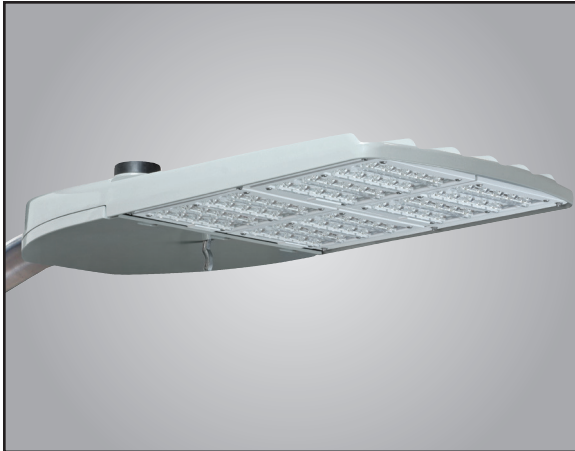


Consistent with LEED® goals & Green Globes™ criteria for light pollution reduction

# Autobahn Series ATB2 Roadway Lighting

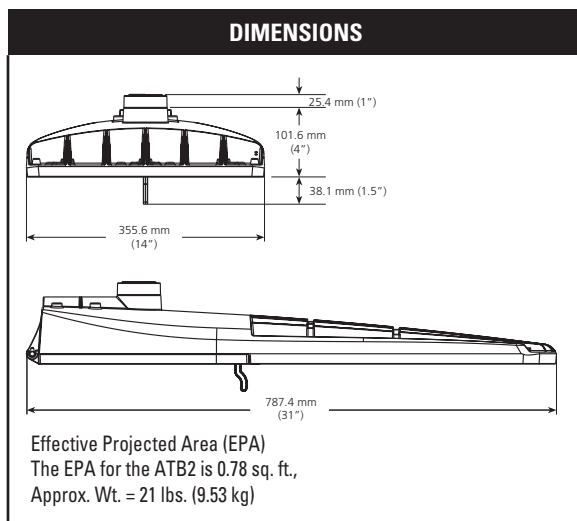
OPKS - ATB2 40BLEDE70 MVOLT R2 BK IL P7 SH RFD210947 (BLACK-C)

## PRODUCT OVERVIEW



### Applications:

- Roadways
- Off ramps
- Residential streets
- Parking lots



### Features:

#### OPTICAL

**Same Light:** Performance is comparable to 250-400W HPS roadway luminaires.

**White Light:** Correlated color temperature - standard 4000K, 70 CRI minimum or optional 5000K, 70 CRI minimum.

Unique IP66 rated LED light engines provided 0% uplight and restrict backlight to within sidewalk depth, providing optimal application coverage and optimal pole spacing.

Available in Type II, III, IV, & V roadway distributions.

#### ELECTRICAL

**Expected Life:** LED light engines are rated >100,000 hours at 25°C, L70.

Electronic driver has an expected life of 100,000 hours at a 25°C ambient.

**Lower Energy:** Saves an average of 40-60% over comparable HPS platforms.

**Robust Surge Protection:** Three different surge protection options provide a minimum of IEEE/ANSI C62.41 Category C (10kV/5kA) protection. 20kV/10kA protection is also available.

#### MECHANICAL

**Easy to Maintain:** Includes standard AEL lineman-friendly features such as tool-less entry, 3 station terminal block and quick disconnects. Bubble level located inside the electrical compartment for easy leveling at installation.

Rugged die-cast aluminum housing is polyester powder-coated for durability and corrosion resistance. Rigorous five-stage pre-treating and painting process yields a finish that achieves a scribe creepage rating of 8 (per ASTM D1654) after over 1000 hours exposure to salt fog chamber (operated per ASTM B117) Optional Enhanced Corrosion Resistant finish (CR) increases the salt spray exposure to 5000 hours.

Four-bolt mast arm mount is adjustable for arms from 1-1/4" to 2" (1-5/8" to 2-3/8" O.D.) diameter and provides a 3G vibration rating per ANSI C136.

Wildlife shield is cast into the housing (not a separate piece).

#### CONTROLS

NEMA 3 Pin photocontrol receptacle is standard, with the Acuity designed ANSI 5 Pin and 7 Pin receptacles optionally available.

Premium solid state locking sale photocontrol - PCSS (10 year rated life).

Extreme long life sold state locking style photocontrol - PCLL (20 year rated life).

Mult-level dimming available to provide scheduled dimming as specified by the customer.

Optional onboard Adjustable Output module allows the light output and input wattage to be modified to meet site specific requirements, and can also allow a single fixture to be flexibly applied in many different applications.

#### STANDARDS

DesignLights Consortium® (DLC) qualified product. Not all versions of this product may be DLC qualified. Please check the DLC Qualified Products List at [www.designlights.org/QPL](http://www.designlights.org/QPL) to confirm which versions are qualified.

Rated for -40°C to 40°C ambient.

CSA Certified to U.S. and Canadian standards

Complies with ANSI: C136.2, C136.10, C136.14, C136.31, C136.15, C136.37

Note: Specifications subject to change without notice.

Autobahn Series – AEL\_0109\_ATB2



# Autobahn Series ATB2

## Roadway Lighting

### ORDERING INFORMATION

Example: ATB2 40LEDE70 MVOLT R2

ATB2	40BLEDE70	MVOLT	R2
Series	Performance Packages	Voltage	Optics
<b>ATB2</b> Autobahn LED Roadway	<b>40BLEDE70</b> 40B Chips, 700mA Driver	<b>MVOLT</b> Multi-volt, 120-277V	<b>R2</b> Roadway Type II
	<b>40BLEDE10</b> 40B Chips, 1050mA Driver	<b>347</b> 347V	<b>R3</b> Roadway Type III
	<b>40BLEDE13</b> 40B Chips, 1300mA Driver	<b>480</b> 480V	<b>R4</b> Roadway Type IV
	<b>40BLEDE15<sup>1</sup></b> 40B Chips, 1500mA Driver		<b>R5</b> Roadway Type V
	<b>60BLEDE70</b> 60B Chips, 700mA Driver		
	<b>60BLEDE85</b> 60B Chips, 850mA Driver		
	<b>60BLEDE10</b> 60B Chips, 1050mA Driver		
	<b>60BLEDE13</b> 60B Chips, 1300mA Driver		
	<b>80BLEDE70</b> 80B Chips, 700mA Driver		
	<b>80BLEDE85</b> 80B Chips, 850mA Driver		
	<b>80BLEDE10</b> 80B Chips, 1050mA Driver		

BK - IL - P7 - SH -RFD210947 "C" LABEL-BLACK-RFWD#6463 - 10 YEAR WARRANTY

Options
---------

#### Color Temperature (CCT)

- (Blank)** 4000K CCT, 70 CRI Min. (Standard)
- 5K** 5000K CCT, 70 CRI Min.

#### Paint

- (Blank)** Gray (Standard)
- BK** Black
- BZ** Bronze
- DDB** Dark Bronze
- GI** Graphite
- WH** White

#### Surge Protection

- Blank** Standard 10kV/5kA SPD
- 20** 20kV/10KA SPD
- MP<sup>1</sup>** MOV Pack
- IL<sup>1</sup>** SPD with Indicator Light

#### Terminal Block

- (Blank)** Terminal Block (Standard)
- T2** Wired to L1 & L2 Positions

#### Misc.

- BL** External Bubble Level
- CR** Enhanced Corrosion Resistant Finish
- HS** House-Side Shield
- NL** Nema Label
- XL** Not CSA Certified
- HK** Hingekeepers

#### Controls

- (Blank)** 3 Pin NEMA Photocontrol Receptacle (Standard)
- P5<sup>2</sup>** 5 Pin Photocontrol Receptacle (Dimmable Driver Included)
- P7<sup>2</sup>** 7 Pin Photocontrol Receptacle (Dimmable Driver Included)
- NR** No Photocontrol Receptacle
- AO<sup>2</sup>** Field Adjustable Output
- DM** 0V-10V Dimmable Driver (Controls by others)
- ML<sup>3,4</sup>** Multi-Level Dimming
- PCSS<sup>1</sup>** Solid State Lighting Photocontrol (120-277V)
- PCLL** Solid State Long Life Photocontrol
- SH** Shorting Cap

#### Packaging

- (Blank)** Single Unit (Standard)
- JP** Job Pack (24/Pallet)

#### Notes

- Not available in 347 or 480V.
- Not available with DM or ML options.
- Not available with AO, DM, P5 or P7 options.
- Dimming schedule and light level information required from the customer in order to configure product. Contact Infrastructure Technical Support to proceed.



AEL Headquarters, 3825 Columbus Road, Granville, OH 43023  
 www.americanelectricalighting.com  
 © 2014-2016 Acuity Brands Lighting, Inc. All Rights Reserved. 03/29/16

**Warranty** Five-year limited warranty. Complete warranty terms located at: [www.acuitybrands.com/CustomerResources/Terms\\_and\\_conditions.aspx](http://www.acuitybrands.com/CustomerResources/Terms_and_conditions.aspx)  
 Actual performance may differ as a result of end-user environment and application. All values are design or typical values, measured under laboratory conditions at 25 °C. Specifications subject to change without notice.

Please contact your sales representative for the latest product information.

# Autobahn Series ATB2

## Roadway Lighting

### PERFORMANCE PACKAGE

Performance Package	Drive Current (mA)	Input Watts	Optic	4000K CCT		LLD @ 25°C	
				Delivered Lumens	Efficacy (LPW)	50k Hours	100k Hours
40B	700	91	R2	11266	124	0.98	0.96
	1000	138		15685	114	0.95	0.90
	1300	177		18277	103	0.94	0.88
	1500	204		20590	101	0.91	0.85
	700	91	R3	11160	123	0.98	0.96
	1000	138		15520	112	0.95	0.90
	1300	177		18050	102	0.94	0.88
	1500	204		20036	98	0.91	0.85
	700	91	R4	10775	118	0.98	0.96
	1000	138		15015	109	0.95	0.90
	1300	177		17341	98	0.94	0.88
	1500	204		19458	95	0.91	0.85
	700	91	R5	12097	133	0.98	0.96
	1000	138		16729	121	0.95	0.90
	1300	177		19564	111	0.94	0.88
	1500	204		21678	106	0.91	0.85
60B	700	133	R2	16986	128	0.98	0.96
	850	173		19966	115	0.95	0.90
	1000	208		23710	114	0.95	0.90
	1300	260		27308	105	0.94	0.88
	700	133	R3	17128	129	0.98	0.96
	850	173		20105	116	0.95	0.90
	1000	208		23250	112	0.95	0.90
	1300	260		27477	106	0.94	0.88
	700	133	R4	16516	124	0.98	0.96
	850	173		19429	112	0.95	0.90
	1000	208		22718	109	0.95	0.90
	1300	260		26400	102	0.94	0.88
	700	133	R5	17882	134	0.98	0.96
	850	173		21000	121	0.95	0.90
	1000	208		24673	119	0.95	0.90
	1300	260		28838	111	0.94	0.88
80B	700	180	R2	22528	125	0.98	0.96
	850	224		26394	118	0.95	0.90
	1000	274		30998	113	0.95	0.90
	700	180		22127	123	0.98	0.96
	850	224	R3	25955	116	0.95	0.90
	1000	274		30491	111	0.95	0.90
	700	180		21701	121	0.98	0.96
	850	224		25350	113	0.95	0.90
	1000	274	R4	29567	108	0.95	0.90
	700	180		23799	132	0.98	0.96
	850	224		27851	124	0.95	0.90
	1000	274		32391	118	0.95	0.90

Note: Information shown above is based on nominal system data. Individual fixture performance may vary. Specifications subject to change without notice.

ATB2 LLD Multiplier	15°C	20°C	25°C	30°C	35°C	40°C
	1.02	1.01	1	0.99	0.97	0.96

To calculate the LLD for a temperature other than 25°C, multiply the LLD @ 25°C (shown in the performance package table) by the LLD multiplier for the selected temperature.



AEL Headquarters, 3825 Columbus Road, Granville, OH 43023  
 www.americanelectricalighting.com  
 © 2014-2016 Acuity Brands Lighting, Inc. All Rights Reserved. 03/29/16

**Warranty** Five-year limited warranty. Complete warranty terms located at: [www.acuitybrands.com/CustomResources/Terms\\_and\\_conditions.aspx](http://www.acuitybrands.com/CustomResources/Terms_and_conditions.aspx)  
 Actual performance may differ as a result of end-user environment and application. All values are design or typical values, measured under laboratory conditions at 25 °C. Specifications subject to change without notice.

*Please contact your sales representative for the latest product information.*