



8/18/2010

Power Equipment Sales
1507 LAKE AVE BX 3134
KANSAS CITY, KS 66103

Valmont Order No. 130459-P2
Customer Order No. 101068

Enclosed are the requested drawings for approval and return covering the order indicated above. This drawing represents Lighting Standard Materials to be furnished by Valmont Industries, Inc.

Please return the one (1) complete set of drawings marked **Approved** to Jamie Thomson , or provide other written authorization at the time of order release.

Send to:

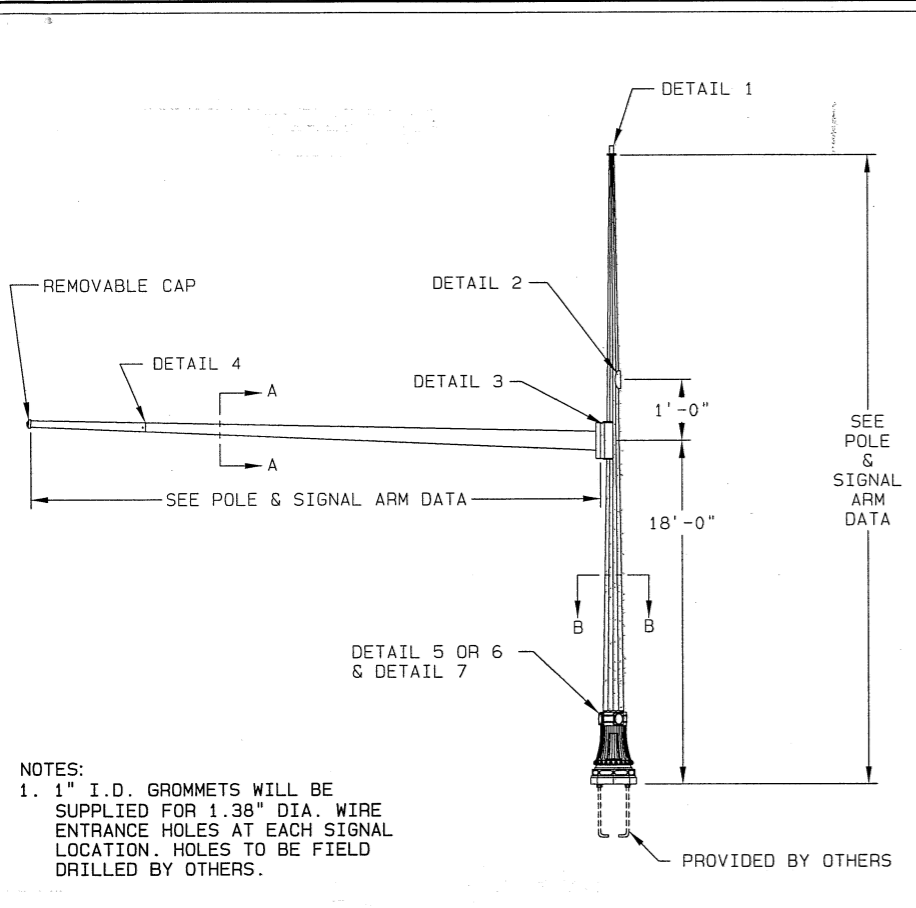
<p>VALMONT INDUSTRIES, INC. Americas Lighting and Communication Structures 7002 N. 288th Street P.O. Box 358 Valley, Nebraska 68064-0358</p>

Valmont approval policy: *It is important that all verification information must accompany the order release. Omission of the information may cause a delay in the shipping schedule. Also note; should we require additional information, clarification, or if there is a customer initiated change, the quoted lead-time is subject to when we receive this information. Our quoted lead-time begins once we receive the completed information or the final customer change. Damages resulting from delays in receiving complete information or customer changes will not be the responsibility of Valmont Industries, Inc.*

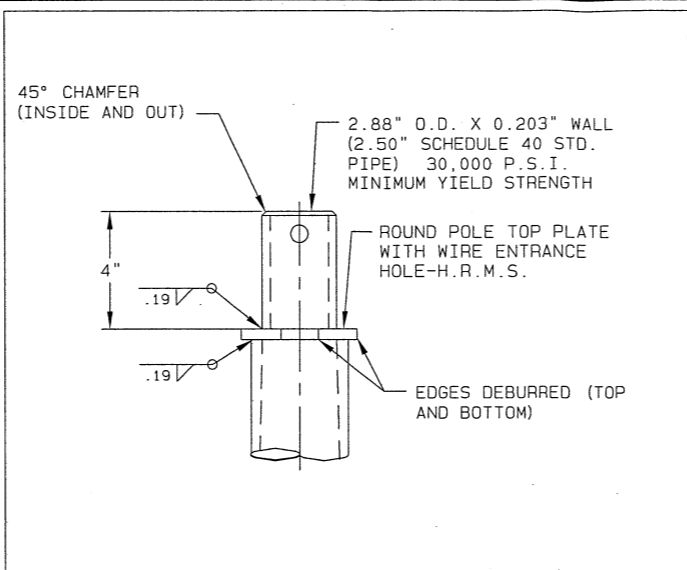
Sincerely,
VALMONT INDUSTRIES, INC.
Gary G. Liekhus
Engineering Order Specialist

cc: FILE

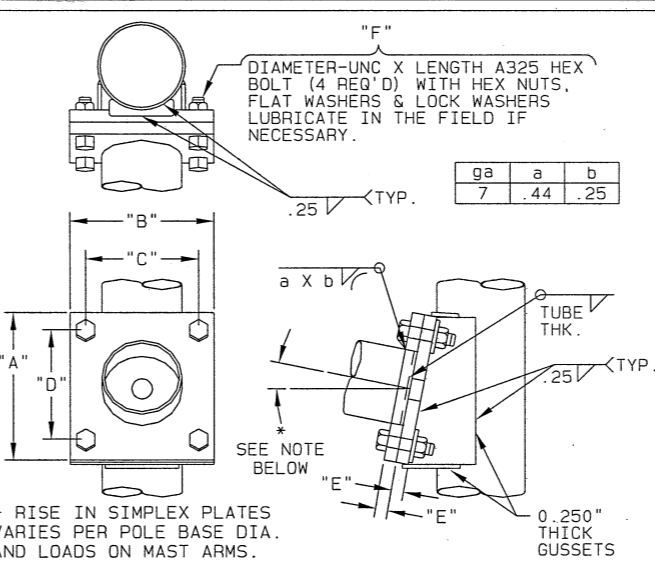
Americas Lighting and Communication Structures
Valmont Industries, Inc. 7002 N. 288th Street P.O. Box 358 Valley, Nebraska 68064-0358 USA
402-359-2201 800-825-6668 Fax 402-359-6221 valmont.com valmontstructures.com



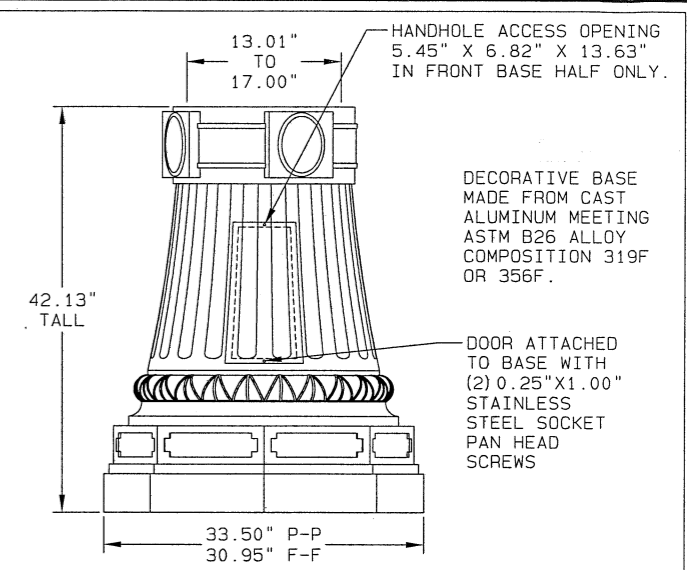
NOTES:
 1. 1" I.D. GROMMETS WILL BE SUPPLIED FOR 1.38" DIA. WIRE ENTRANCE HOLES AT EACH SIGNAL LOCATION. HOLES TO BE FIELD DRILLED BY OTHERS.



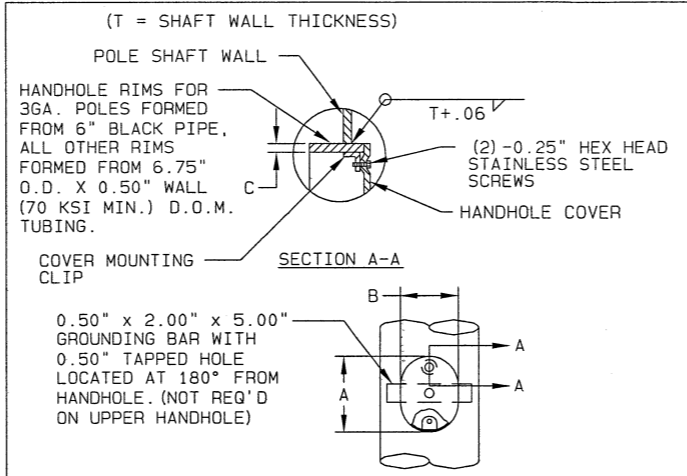
DETAIL 1 POLE TOP TENON



DETAIL 3 SIGNAL ARM ATTACHMENT



DETAIL 6 ST31AC DECORATIVE BASE

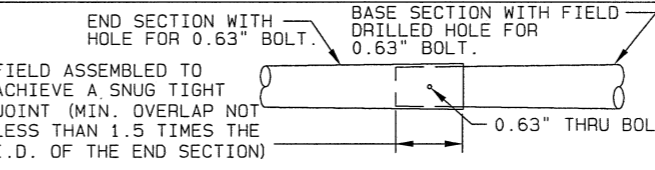


POLE GA.	A	B	C
3	7.56"	5.19"	0.280"
ALL OTHERS	7.56"	5.50"	0.500"

DETAIL 2 HANDHOLE

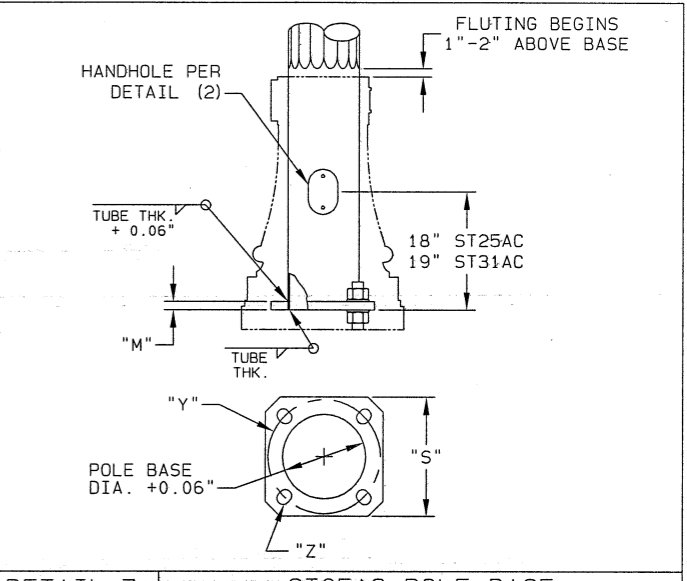
POLE NO.	"A"	"B"	"C"	"D"	"E"	"F"
1	18.25"	18.25"	15.50"	15.50"	1.75"	1.00"-8 UNC X5.50"
2	17.75"	17.75"	15.00"	15.00"	1.75"	1.00"-8 UNC X5.50"
3	17.75"	17.75"	15.00"	15.00"	1.75"	1.00"-8 UNC X5.50"
4	17.75"	17.75"	15.00"	15.00"	1.75"	1.00"-8 UNC X5.50"

SIGNAL ARM ATTACHMENT DATA



SPAN	BASE SECTION		END SECTION	
	LENGTH	GAUGE	LENGTH	GAUGE
52.00'	50.00'	7	3.77'	11

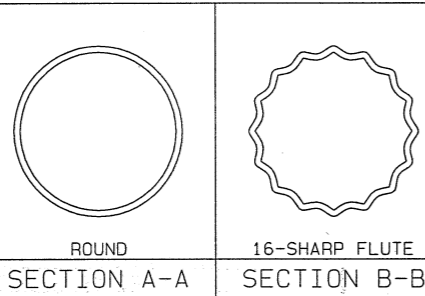
DETAIL 4 SIGNAL ARM SLIP JOINT



DETAIL 7 ST25AC POLE BASE

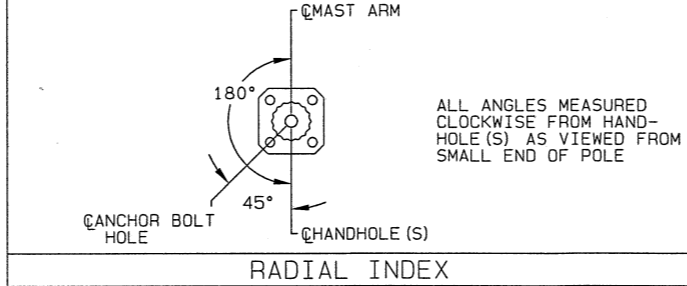
MATERIAL DATA		
COMPONENT	ASTM DESIGNATION	MIN. YIELD (KSI)
TAPERED TUBES	A595 GR. A OR A572	55
POLE BASE-0.250" TUBE	A572 GR. 50	50
POLE BASE-3 GA. TUBE	A36	36
SIMPLEX PLATES	A36	36
GALVANIZING	A123 & A153	
SIGNAL ARM CONN. BOLTS	A325*	

*LUBRICATE IN FIELD IF NECESSARY

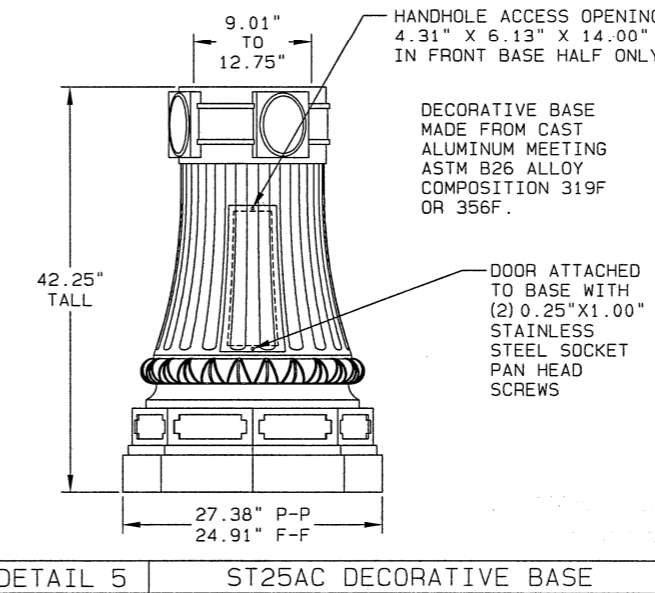


BASE COAT: HOT DIP GALVANIZE TO ASTM A123
 TIE COAT: POLYAMIDE EPOXY
 FINISH COAT: ALIPHATIC ACRYLIC POLYURETHANE
 COLOR: BLACK / FEDERAL STD. 595 COLOR #27038
 VALMONT SPEC: F-3068

DESIGN CRITERIA:
 1994 AASHTO STANDARD SPECIFICATIONS FOR STRUCTURAL SUPPORTS FOR HIGHWAY SIGNS, LUMINAIRES, AND TRAFFIC SIGNALS.
 WIND VELOCITY:
 80 MPH ISOTACH.
 LOADING:
 POLES ARE DESIGNED TO THE ACTUAL LOADING CONDITIONS SHOWN ON THE INTERSECTION PLANS THAT WERE PROVIDED TO VALMONT.



RADIAL INDEX



DETAIL 5 ST25AC DECORATIVE BASE

APPROVED
 By Guy Alon at 2:15 pm, Aug 23, 2010

POLE AND SIGNAL ARM DATA																				
POLE NO.	POLE TYPE	QTY.	POLE TUBE				POLE BASE				ANCHOR BOLT				SIGNAL ARM TUBE				DECO BASE TYPE	
			BASE DIA. (IN)	TOP DIA. (IN)	LENGTH (FT)	GAUGE OR THK. (IN)	SQUARE "S" (IN)	BOLT CIRCLE "Y" (IN)	THK. "M" (IN)	HOLE "Z" (IN)	DIA. "K" (IN)	LENGTH "J" (IN)	HOOK "H" (IN)	THREAD LENGTH "U" (IN)	FIXED END DIA. (IN)	FREE END DIA. (IN)	GAUGE OR THICK (IN)	SPAN (FT)		
1	HR	1	14.75	9.15	40.00	0.250	19.00	19.00	1.75	2.00	1.75	BY OTHERS				12.00	4.96	DET. 4	52.00	ST31AC
2	HR	1	13.00	7.40	40.00	3	18.00	17.00	1.75	2.00	1.75	BY OTHERS				11.00	4.28	7	48.00	ST25AC
3	HR	1	13.00	7.40	40.00	3	18.00	17.00	1.75	2.00	1.75	BY OTHERS				11.00	4.28	7	48.00	ST25AC
4	HR	1	13.00	7.40	40.00	3	18.00	17.50	1.75	2.00	1.75	BY OTHERS				11.00	4.56	7	46.00	ST25AC

REV	DATE	BY	CHECK	DESCRIPTION	SOLD TO: LEMAC SHIP TO: CITY OF OVERLAND PARK P.O. #: 101068 AGENT: POWER EQUIPMENT SALES	JOB CITY OF OVERLAND PARK, KS. 75TH STREET & METCALF AVE. TITLE TRAFFIC SIGNAL STRUCTURES	VALMONT INDUSTRIES, INC. RESERVES THE RIGHT TO INSTALL VARIOUS, ENGINEER APPROVED, MATERIAL HANGING ACCOMMODATIONS TO FACILITATE THE MANUFACTURING PROCESS.	valmont Valley, NE 68064 (402) 359-2201	ORDER NUMBER: 130459-P2 PAGE NUMBER: 1 OF 1 DRAWING NUMBER KS130459P2
-----	------	----	-------	-------------	--	---	---	---	--