

MATERIAL DATA

COMPONENT	ASTM DESIGNATION	MIN. YIELD (KSI)	COMPONENT	ASTM DESIGNATION	MIN. YIELD (KSI)
POLE SHAFT - 7 & 3 GA.	A595 GR. A	55	GALVANIZING HARDWARE	A153	
POLE SHAFT - 0.250"	A572 GR. 65	65	SIGNAL ARM SHAFT	A595 GR. A	55
POLE BASE - A595 SHAFT	A36	36	SIGNAL ARM ATTACHMENT PLATES	A36	36
POLE BASE - A572 SHAFT	A572	50			
GROUNDING BAR	A36	36			
SIGNAL ARM CONN. BOLTS	A325*				
LUM. ARM ATTACHMENT	A27 GR. 65-35 OR A36	35			

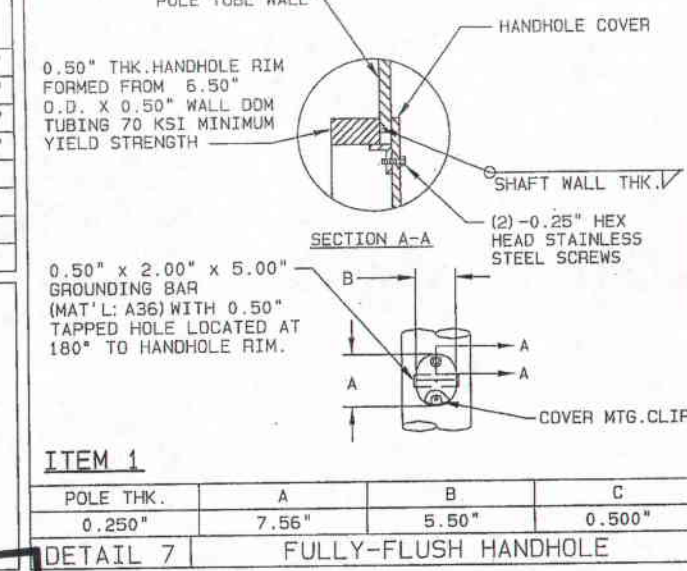
*LUBRICATE IN FIELD IF NECESSARY

FINISH

BASE COAT: HOT DIP GALVANIZE TO ASTM A123
 TIE COAT: POLYAMIDE EPOXY
 FINISH COAT: ALIPHATIC ACRYLIC POLYURETHANE
 COLOR: GREEN/ RAL 6012 U-PACK
 VALMONT SPEC: F-3066G

SIGNAL ARM ATTACHMENT DATA

ITEM	"A"	"B"	"C"	"D"	"E"	"F"
1	19.75"	19.75"	16.50"	16.50"	2.00"	1.25"-7 UNC X6.25"
2	16.25"	16.25"	13.50"	13.50"	1.50"	1.00"-8 UNC X5.00"
3	16.25"	16.25"	13.50"	13.50"	1.50"	1.00"-8 UNC X5.00"
4	17.75"	17.75"	15.00"	15.00"	1.75"	1.00"-8 UNC X5.50"



POLE AND SIGNAL ARM DATA

ITEM	QTY.	POLE TUBE				POLE BASE				ANCHOR BOLT			SIGNAL ARM TUBE				DECO BASE TYPE
		BASE DIA. (IN)	TOP DIA. (IN)	LENGTH (FT)	GAUGE OR THK. (IN)	SQUARE "S" (IN)	BOLT CIRCLE "Y" (IN)	THK. "M" (IN)	HOLE "Z" (IN)	DIA. "K" (IN)	LENGTH "J" (IN)	HOOK "H" (IN)	THREAD LENGTH "U" (IN)	FIXED END DIA. (IN)	FREE END DIA. (IN)	GAUGE OR THICK (IN)	
1	1	15.00	12.34	19.00	0.250	20.50	20.50	1.75	2.00	1.75	BY OTHERS	12.50	3.76	DET.5	65.00	CN34AC	
2	1	13.00	7.82	37.00	7	18.00	17.00	1.50	1.75	1.50	BY OTHERS	9.00	4.80	7	30.00	CN32AC	
3	1	13.00	7.82	37.00	7	18.00	17.00	1.50	1.75	1.50	BY OTHERS	9.00	4.52	7	32.00	CN32AC	
4	1	13.00	7.82	37.00	3	18.00	17.50	1.75	2.00	1.75	BY OTHERS	11.00	4.00	7	50.00	CN32AC	

DESIGN CRITERIA:
 1994 AASHTO STANDARD SPECIFICATIONS FOR STRUCTURAL SUPPORTS FOR HIGHWAY SIGNS, LUMINAIRES, AND TRAFFIC SIGNALS.

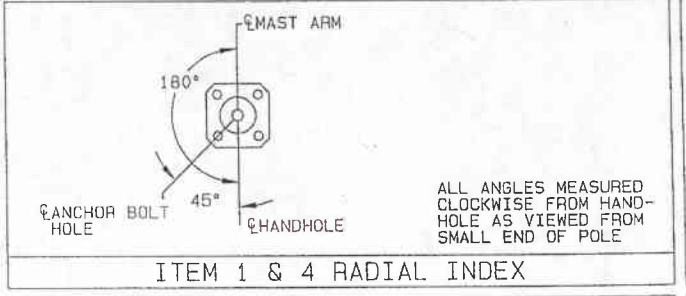
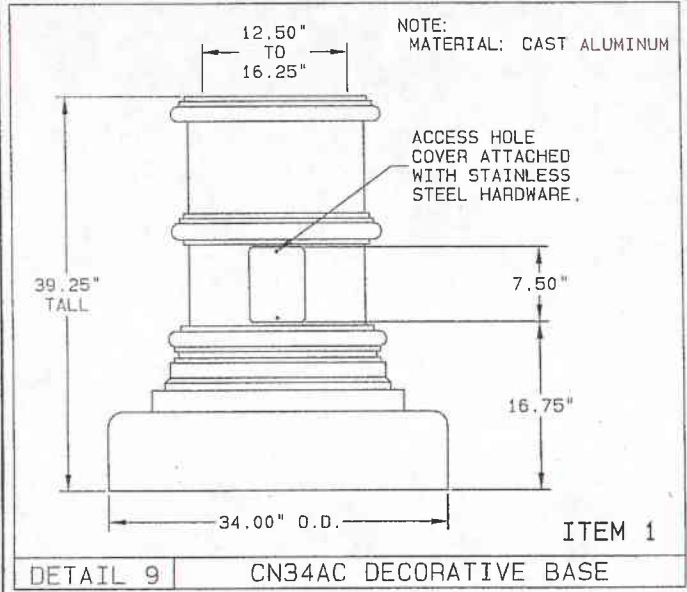
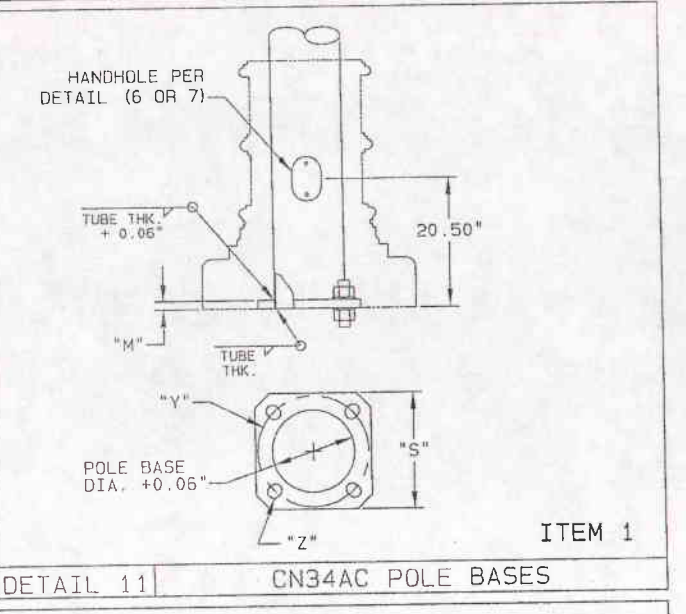
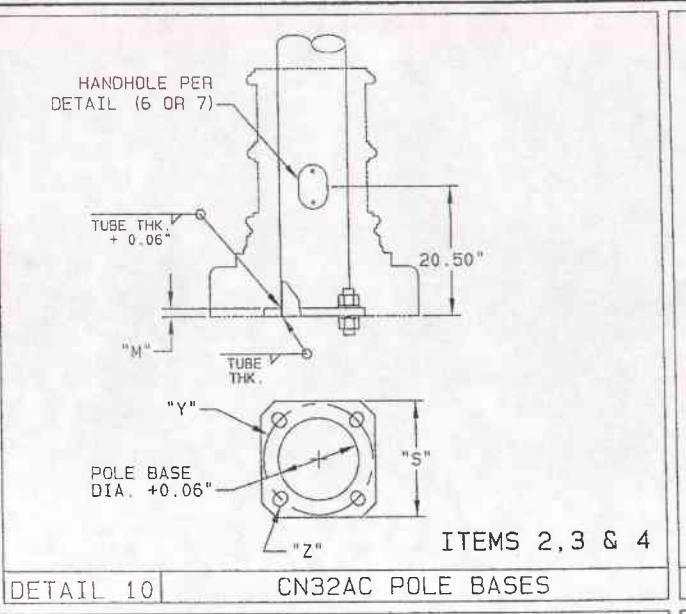
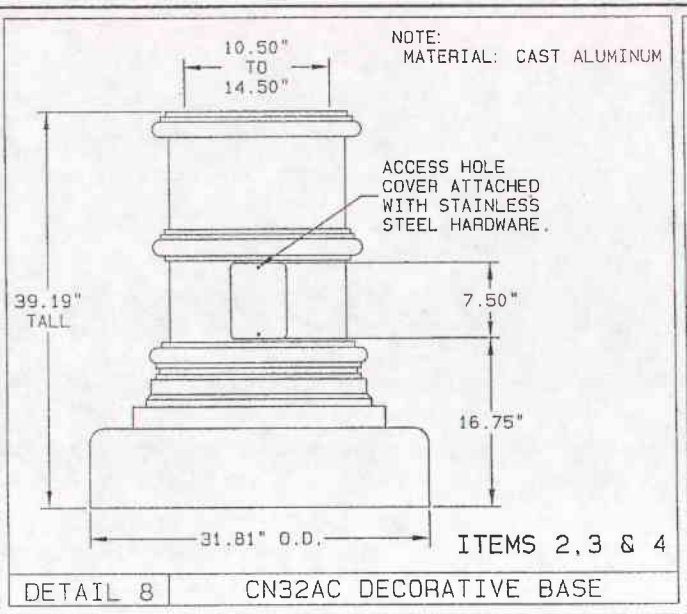
WIND VELOCITY:
 80 MPH ISOTACH.

NOTES:
 1. PLEASE VERIFY ALL MAST/ARM/HAND HOLE AND DRILLING ORIENTATIONS PRIOR TO MANUFACTURE.

TRAFFIC DIVISION
PUBLIC WORKS DEPARTMENT
 City of Overland Park, Kansas
 Date: 1/11/16
 Reviewed By: AM
 REVIEWED EXCEPTIONS NOTED REJECTED

C	GGL 01/09/12	GGL 01/09/12	REV HH ELEVATION HT PER CUSTOMER REMARKS	SOLD TO: GRAYBAR	JOB	CITY OF OVERLAND PARK, KS.	VALMONT INDUSTRIES, INC. RESERVES THE RIGHT TO INSTALL VARIOUS, ENGINEER APPROVED, MATERIAL HANGING ACCOMMODATIONS TO FACILITATE THE MANUFACTURING PROCESS.	ORDER NUMBER: 168900-P1
B	HAT1 12/28/11	RBC2 01/03/12	HH ALL CLIP MNT/HH LOC WAS 17"/PED HH SIZE	SHIP TO: ELECTRICAL SYSTEMS INC.		OPKS 97TH @ QUIVIRA		PAGE NUMBER: 1 OF 4
A	HAT1 12/19/11	GGL 12/19/11	FIN WAS 283FR/HWARE SS/DBC HOLE LOC	P.O. #: 4701411440	TITLE	TRAFFIC SIGNAL STRUCTURES		DRAWING NUMBER: KS168900P1
	HAT1 12/07/11	RBC2 12/07/11		AGENT: POWER EQUIPMENT SALES				REV: C
REV	DRAWN BY-DATE	CHECK BY-DATE	DESCRIPTION					

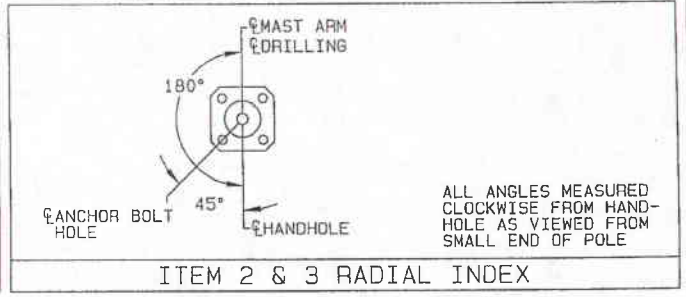




ARE RADIAL INDEXES CORRECT?

YES-CORRECT *ADW*

NO-MARK DRAWING UP AS NECESSARY



TIE COAT: POLYAMIDE EPOXY

FINISH COAT: ALIPHATIC ACRYLIC POLYURETHANE

COLOR: GREEN/ RAL 6012 UPACK

VALMONT SPEC: F-30666

FINISH

TRAFFIC DIVISION

PUBLIC WORKS DEPARTMENT

City of Overland Park, Kansas

Date 11/11/12

Reviewed By ADW

REVIEWED EXCEPTIONS NOTED REJECTED

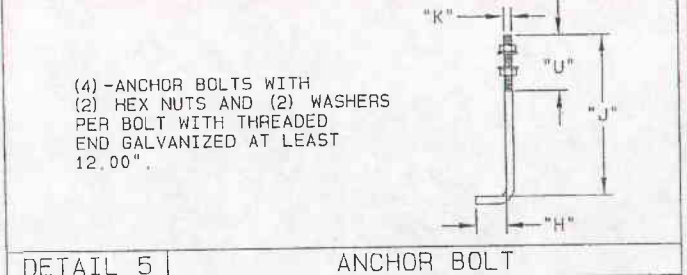
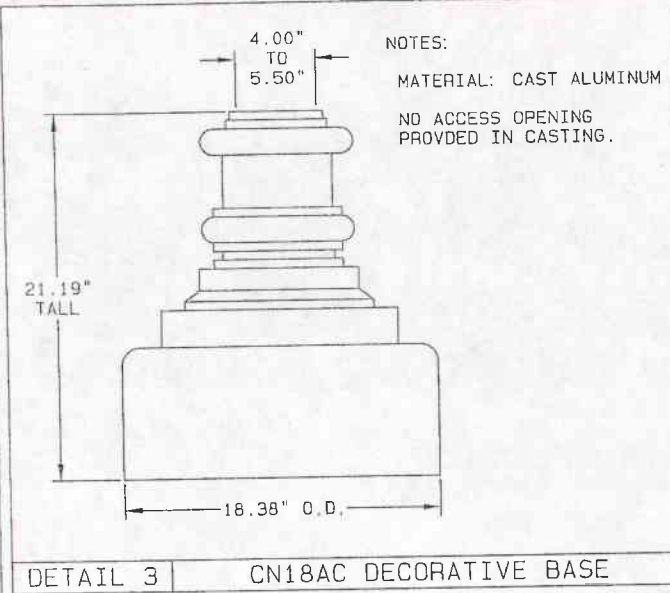
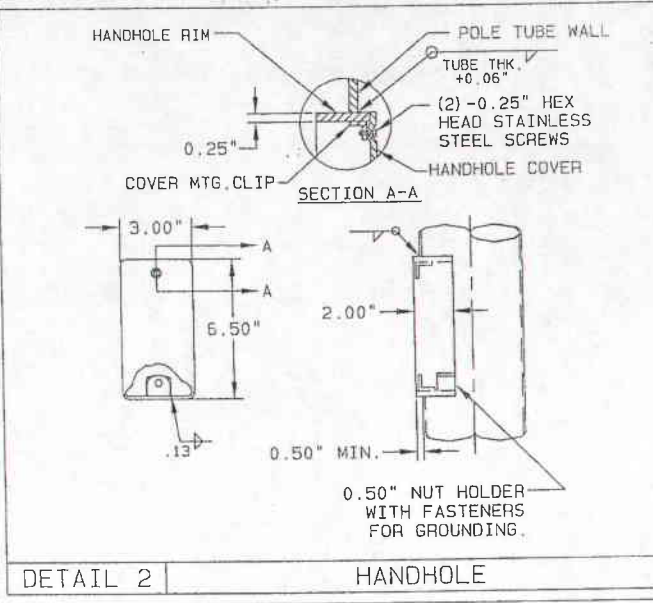
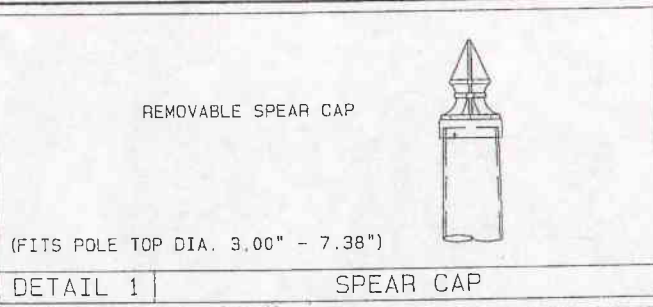
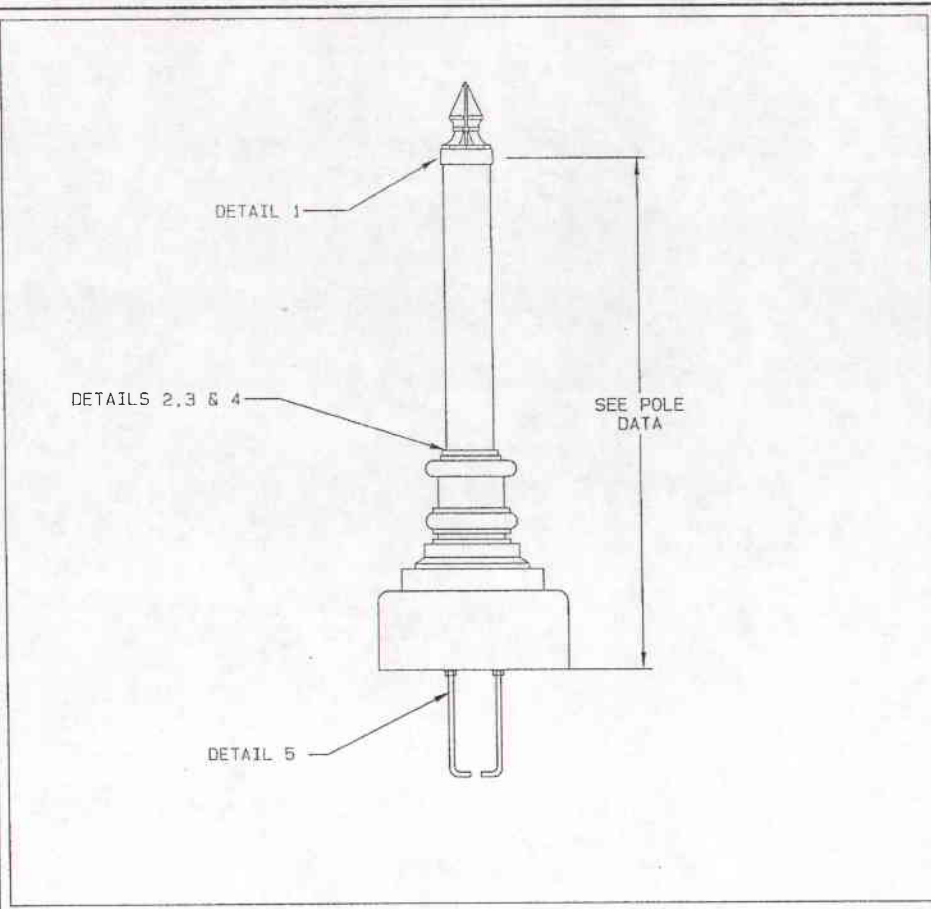
JOB CITY OF OVERLAND PARK, KS.
OPKS 97TH @ QUIVIRA

TITLE TRAFFIC SIGNAL STRUCTURES

VALMONT INDUSTRIES, INC. RESERVES THE RIGHT TO INSTALL VARIOUS, ENGINEER APPROVED, MATERIAL HANGING ACCOMMODATIONS TO FACILITATE THE MANUFACTURING PROCESS.



ORDER NUMBER: 168900-P1
PAGE NUMBER: 2 OF 4
DRAWING NUMBER: KS168900P1
REV: C

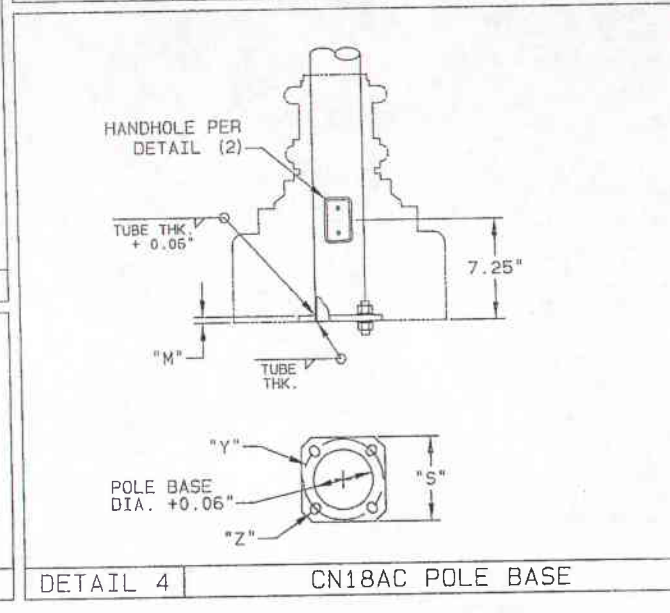
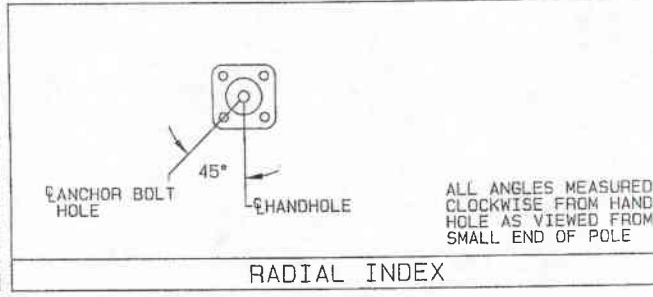


TIE COAT: POLYAMIDE EPOXY
 FINISH COAT: ALIPHATIC ACRYLIC POLYURETHANE
 COLOR: GREEN/ RAL 6012 UPACK
 VALMONT SPEC: F-306GG

FINISH

MATERIAL DATA

COMPONENT	ASTM DESIGNATION	MIN. YIELD (KSI)	COMPONENT	ASTM DESIGNATION	MIN. YIELD (KSI)
POLE TUBE	A500 GR. B	42			
POLE BASE	A36	36			
GALVANIZING	A123 & A153				
ANCHOR BOLTS	F1554 GR. 55	55			



POLE DATA

ITEM	QTY.	POLE TUBE				POLE BASE				ANCHOR BOLT			
		BASE DIA. (IN)	TOP DIA. (IN)	LENGTH (FT)	GAUGE OR THK. (IN)	SQUARE "S" (IN)	BOLT CIRCLE "Y" (IN)	THK. "M" (IN)	HOLE/SLOT "Z" (IN)	DIA. "K" (IN)	LENGTH "J" (IN)	HOOK "H" (IN)	THREAD LENGTH "U" (IN)
9	2	4.50	4.50	9.00	0.237	8.50	8.00	1.00	1.00	0.75	17.00	3.00	6.00
10	1	4.50	4.50	13.00	0.237	8.50	8.00	1.00	1.00	0.75	17.00	3.00	6.00

TRAFFIC DIVISION
 PUBLIC WORKS DEPARTMENT
 City of Overland Park, Kansas
 Date: 1/11/12
 Reviewed By: [Signature]
 REVIEWED EXCEPTIONS NOTED REJECTED

Submittal #2
MT-1323

TOUCH UP PAINT	
QTY. (GALLONS)	DESCRIPTION
2	PRIMER
2	FINISH TO MATCH F30666 (RAL 6012 U-PACK)



F-306 Two Coat Liquid Paint System Over Galvanizing Field Repair Procedure

Coating damaged to or damage through the galvanizing must be primed. Scratches and mars in the top coat only (galvanizing not affected) may be repaired by prepping the surface and applying the top coat.

Surface Preparation: Remove all loose foreign materials from the surfaces to be coated by SSPC-SP 2, Hand Tool Cleaning or SSPC-SP 3, Power Tool Cleaning (coarse-grit sand paper or emery cloth is acceptable). The entire surface to be painted must have a profile for adhesion. Feather the edges of well-bonded coating into the uncoated repair areas where this condition exists with fine-grit sand paper or emery cloth. SSPC-SP 1 Solvent Wipe the entire area to be coated to remove all foreign particles and other contaminants.

Spot Prime Coat (as required): Any finish damage exposing the galvanizing or steel substrate must be spot primed by brushing or rolling. Apply a two component epoxy primer (TNEMEC Series N69-A3977 or equivalent) to the prepared areas to a minimum of 2.5 mils dry film thickness (DFT). Allow coating to cure per the coating vendor's recommendation.

Top Coat: Apply two a two component acrylic polyurethane (TNEMEC Series 1074, 1075, or 175 Endura-Shield or equivalent) to primed areas to a minimum of 2.5 mils dry film thickness (DFT) by brushing or rolling. Allow coating to cure per coating vendor's recommendations.

ADVISORY NOTE: Due to the application of the shop-applied coating and the field applied coating (sprayed versus brushed/rolled), the two coatings may exhibit a slightly different appearance. For spot repairs, keep repair areas as small as possible.

Review MSDS sheets for use of paint products.

Lighting, Traffic and Communication Structures
Valmont Industries, Inc. 28800 Ida Street P.O. Box 358 Valley, Nebraska 68064-0358 USA
402-359-2201 800-825-6668 Fax 402-359-6221 valmont.com valmontstructures.com

TRAFFIC DIVISION		
PUBLIC WORKS DEPARTMENT		
City of Overland Park, Kansas		
Date	1/11/12	
Reviewed By	AMM	
<input checked="" type="checkbox"/> REVIEWED	<input type="checkbox"/> EXCEPTIONS NOTED	<input type="checkbox"/> REJECTED

JOB CITY OF OVERLAND PARK, KS.
OPKS 97TH & QUIVIRA
TITLE TOUCH UP PAINT

VALMONT INDUSTRIES, INC. RESERVES THE RIGHT TO INSTALL VARIOUS, ENGINEER APPROVED, MATERIAL HANGING ACCOMMODATIONS TO FACILITATE THE MANUFACTURING PROCESS.



ORDER NUMBER: 168900-P1
PAGE NUMBER: 4 OF 4
DRAWING NUMBER: KS168900P1
REV: C